

SL 1040 80W laser machine connection user guide



Shenzhen Scotle Technology Group Limited

Address: 038-068 2F Handmade Culture Street, Phase III, Shuiku Road,
Bnatian, Longgang, Shenzhen, China

Tel: 86-755-89378482 Mobile: 86-15986801592

Skype: scotle2014 WhatsApp: +86 15986801592

Website: www.china-cncrouter.com www.chinacnczone.com

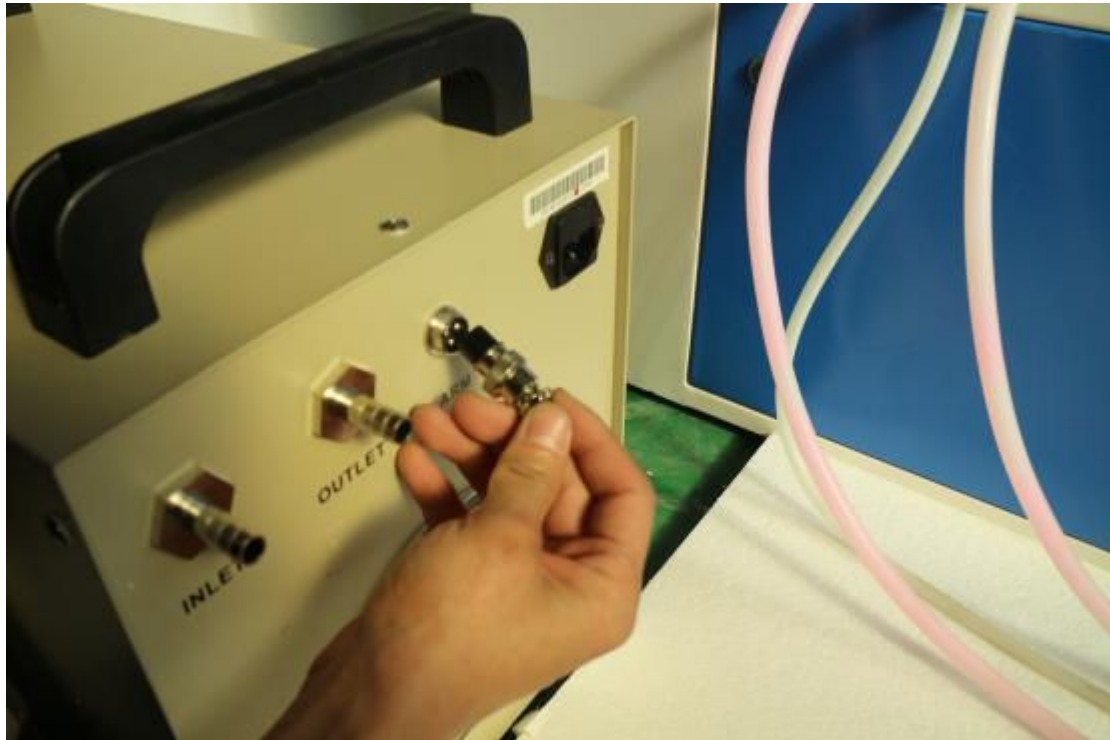
E-mail: sales09@scotle.com sales09@chinacnczone.com

Content

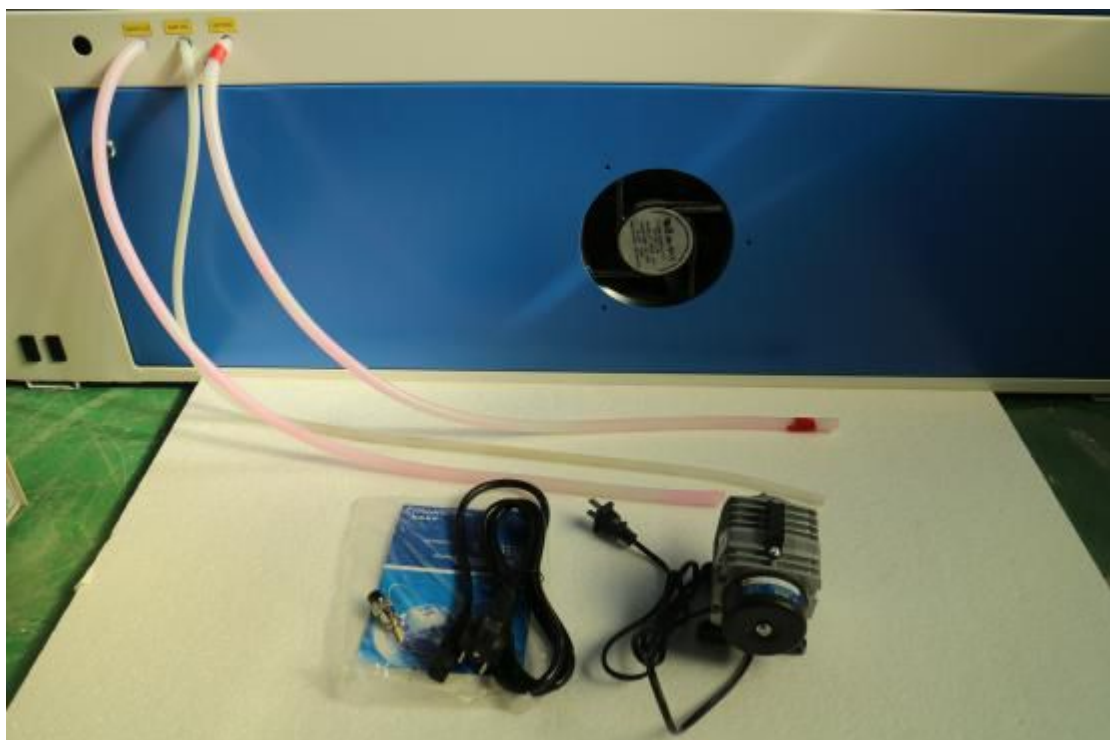
CW 3000 chiller connection.....	3
Air pump connection.....	5
Machine connection.....	6

CW 3000 chiller connection

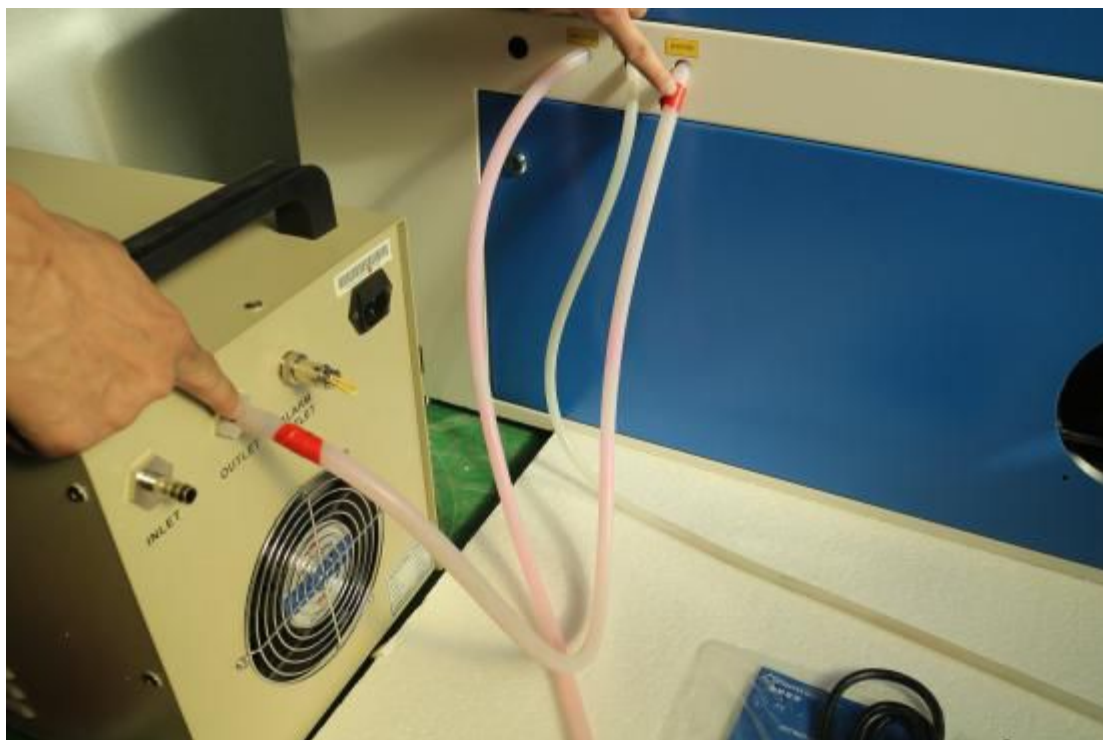
1. Plug the silver ALARM OUTLET device into ALARM OUTLET port, as below picture.



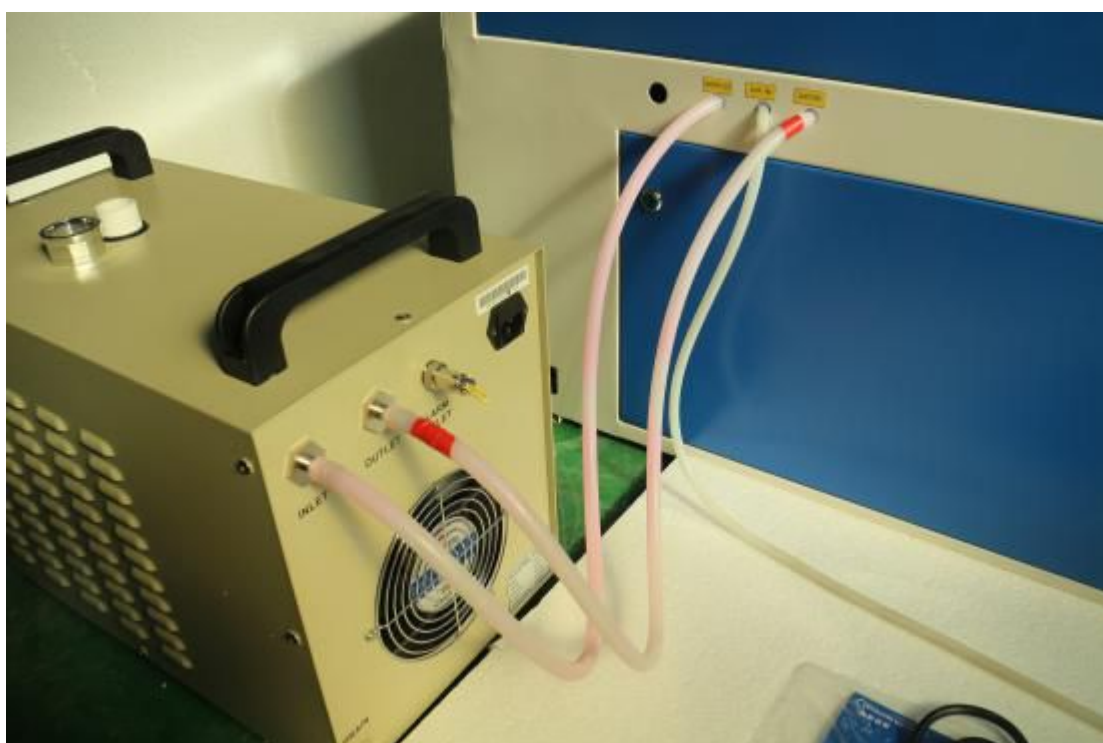
2. Water tube connection



A. Connect WATERIN tube with OUTLET port in CW3000 chiller, as below picture.

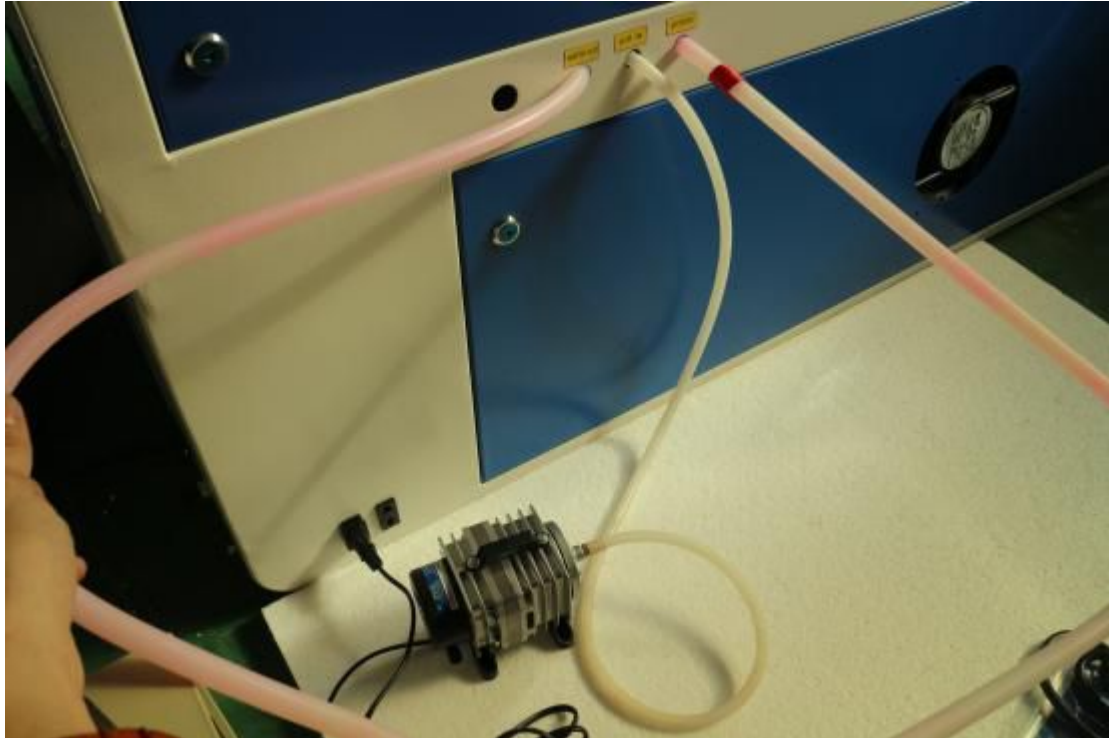


B. Connect WATEROUT tube with INLET port in CW3000 chiller, as below picture.



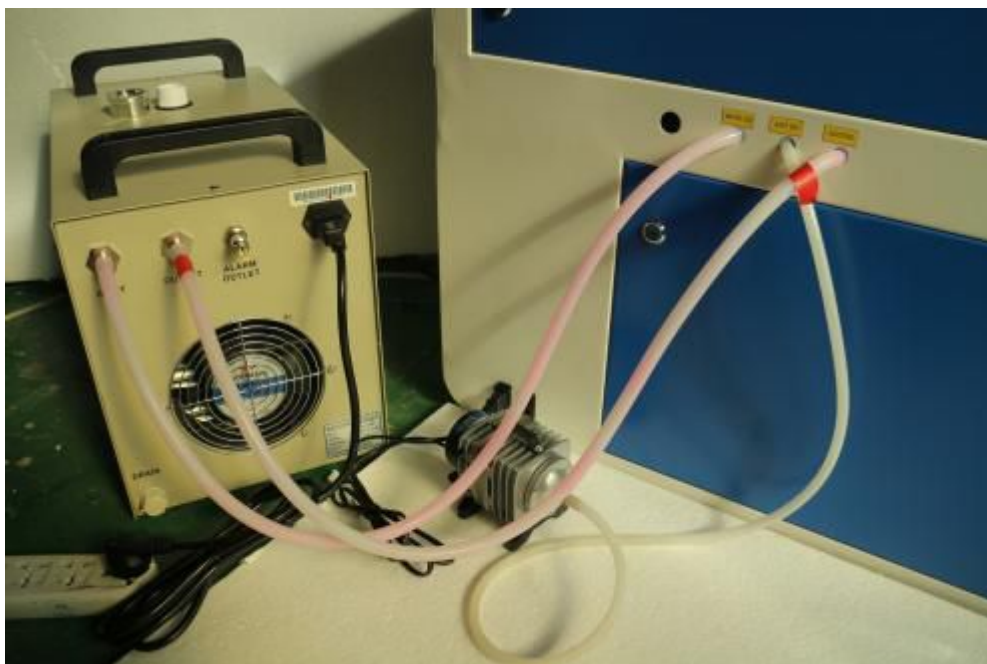
Air pump connection

1. Connect AIR IN tube with air pump
2. Plug power cable into the socket in machine, as below picture show.



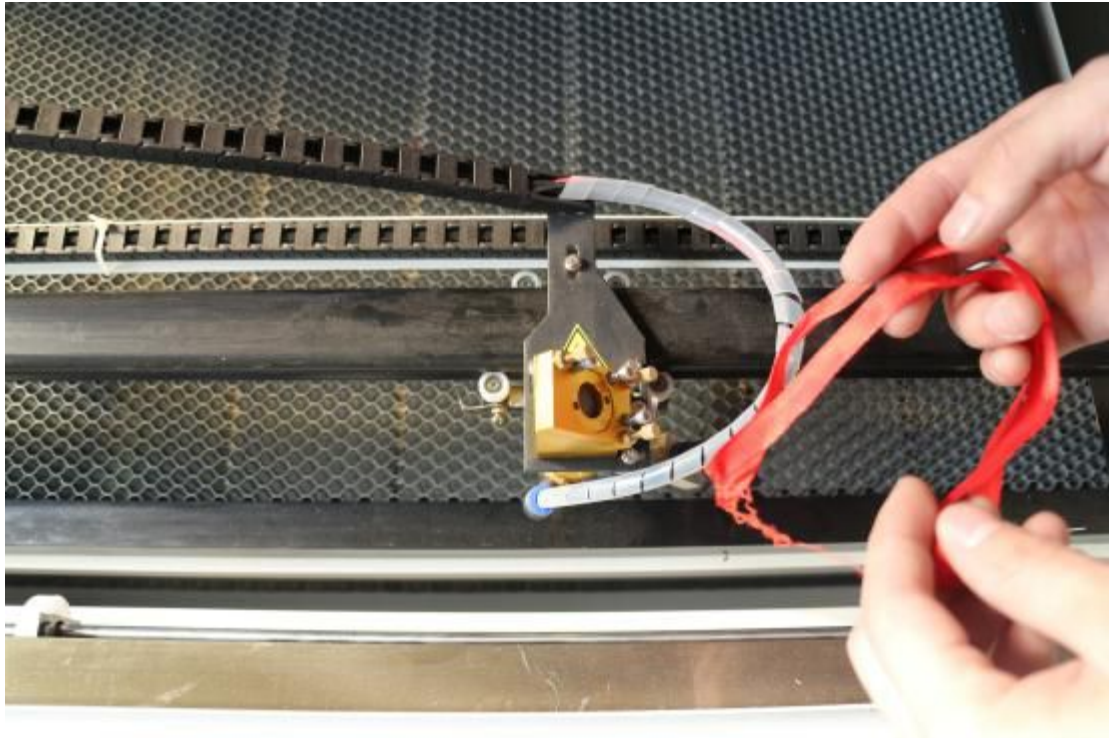
3. Plug in the CW 3000 power supply cable,

Now, the CW3000 chiller and air pump has connected already, as below picture.



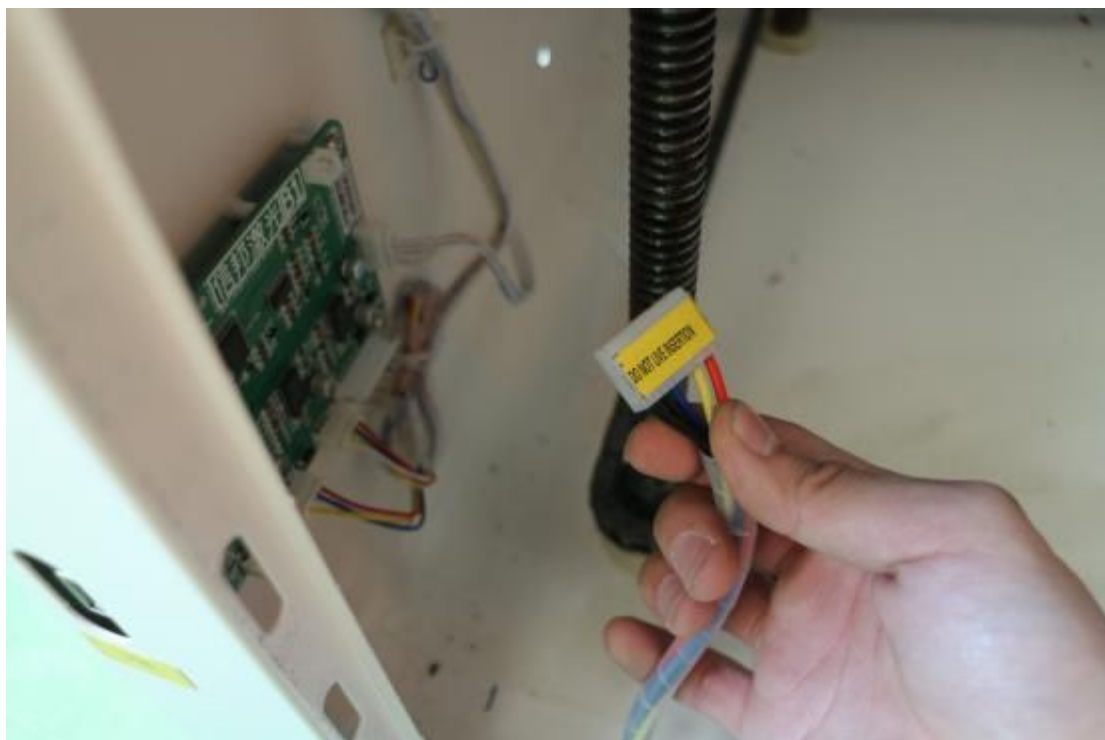
Machine connection

1. Open the machine cover and loosen ribbon in laser head. As below picture.



2. Open the broadside cover and connect main board, as below pictures





3. Machine power supply cable connection, as below picture show.



4. Connect machine USB port with computer and plug USB Dongle in computer.



Now the SL 1040 80W laser machine connection has been finished.

Tips: When machine work, user should ensure there is enough water in CW 3000 chiller, user can add water by water intake which as below picture show.

