

Powerful CNC 6040 4 axis CNC Router mini CNC Machine with USB Controller

Effective working travel 580(X)mm*400(Y)mm*105(Z)mm

Shape dimension 880*670*640mm

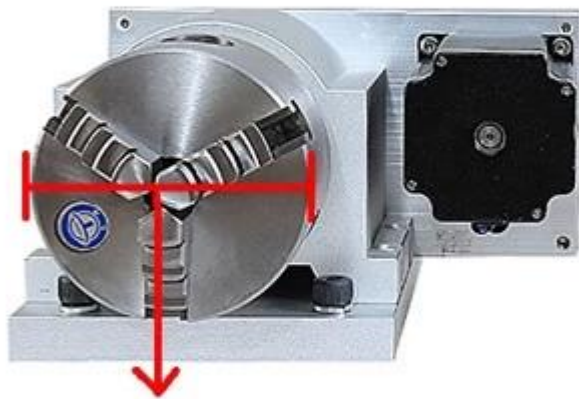
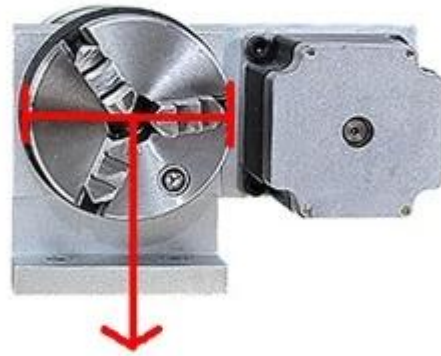
Max.workpiece dimension 750mm*450mm<150mm

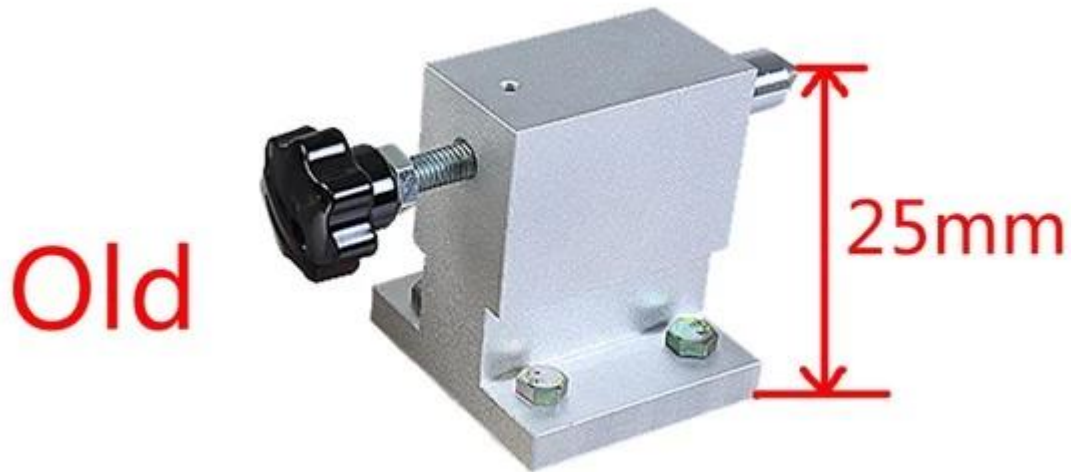
Work table dimension 750mm*480mm

acceptable material thickness $\leq 150\text{mm}$

Outstanding features as below

1. 1500w / 2200w Water Cooled Spindle for selection
2. 4th axis can be Plug-and play, no need to replace controller box.
3. Technical support always available with live video support.
4. Ball screw high precision.
5. Independent power supply for mainboard, prolong using life.
6. Software: compatible with Mach3 or USB CNC software.
7. Limited switch added.
8. Auto-Checking function, easy to set origin of Z axis.
9. The 4th axis is updated, the centre-height is 65mm and clamping diameter is 80mm.

New Version**80mm****Old Version****50mm**



10. Can be connected with computer and notebook by USB interface parallel port for computer.

11. Can engrave material such acrylic, brass, wood, aluminum, PCB and so on.

12. Spindle diameter: 80mm

13. Can ship from our overseas warehouse.

14. From professional [China CNC router factory](#).

P.S: **Original Mach3 soft available**

Note: You may also interested in below, Just click below link::

[A. The comparisons of CNC 6040 made by ChinaCNCzone and Other suppliers.](#)

[B. What are the differences between ChinaCNCzone NEW CNC 6040 and Old Version](#)



02 Parameters China zone

□□

CNC 6040 4 Axis Parameters		
Effective working travel	580(X)mm*400(Y)mm*105(Z)mm	
Shape dimension	880*670*640mm	
Max.workpiece dimension	750mm*450mm<150mm	
Work table dimension	750mm*480mm	
Frame materials	aluminum alloy 6063 and 6061 the unique and dedicated mold extrusion profiles. let counterfeiter dwarfs	
acceptable material thickness	≤150mm	
Driving units	X axis	1605 ballscrew
	Y axis	1605 ballscrew
	Z axis	1605 ballscrew
Sliding units	X axis	Dia.16mm chrome plate shafts
	Y axis	Dia.20mm chrome plate shafts
	Z axis	Dia.13mm chrome plate shafts

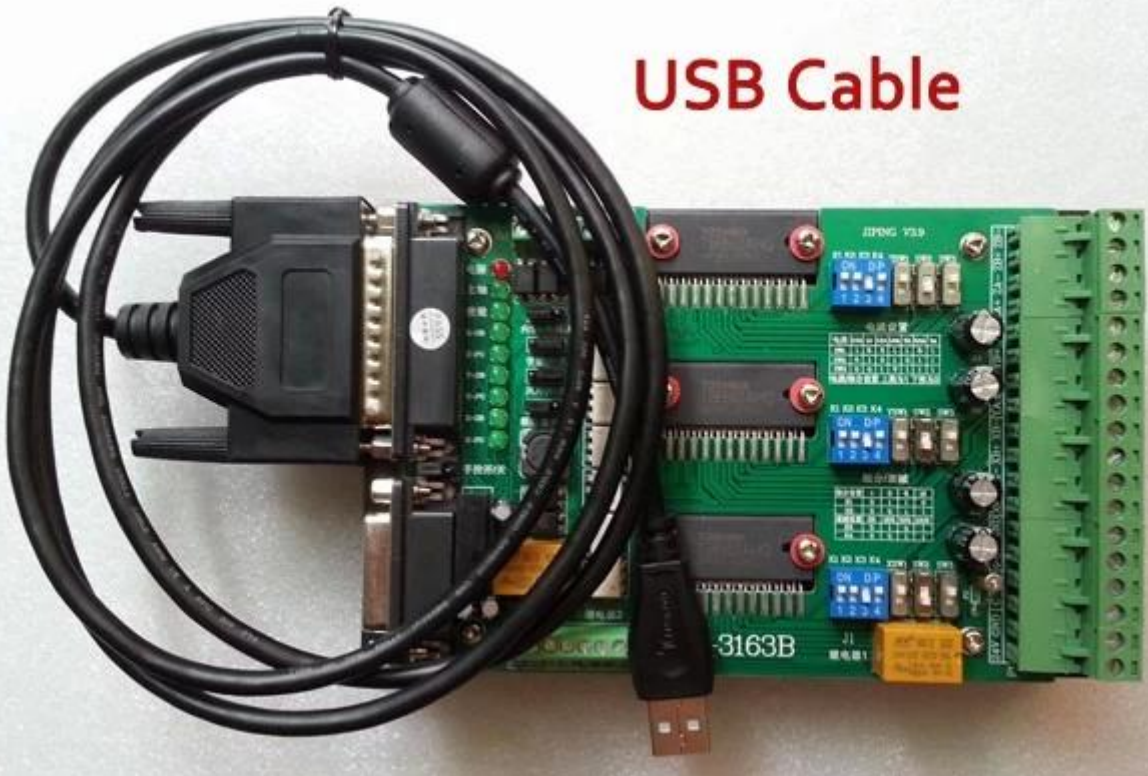
Stepping motor type	57 two-phase 3A 150N.cm
Spindle motor	brand new 1.5KW water cooling spindle, 24000RPM
Principal axis collet	ER11/3.175 mm/6mm
Repeat accuracy	0.05mm
Spindle precision	radial beat acuities 0.03 mm
Carving Instructions	G code/TAB files/nc file/NCC files/DXF file/GERBER file
Communication interface	through parallel and USB connection with computer
Software environment	Windows xp/Win7/Win8/Win10
Maximum speed	0-4000mm/min
Carving speed	0-2500mm/min (different materials differ)
Control unit	Toroidal transformer + PWM power supply module + TB6560 3axis drive board
Computer connection	parallel port/USB port
Command code	G code
Acceptable software	Mach3,USBCNC
Protection	Emergency stop button
Operating Voltage	AC110V/AC220V
Machine weight (Package weight)	3 axis 57kg 4 axis 60KG
package dimension	top□62*49*52cm Bot:80*22*63cm
The 4th axis parameter	
size	220(L)*116(W)*105(H)mm
centre-height	65mm
clamping diameter	80mm
reduction ratio	1:3

03 Product Images





USB Cable





04 Applications

ChinaCNCzone

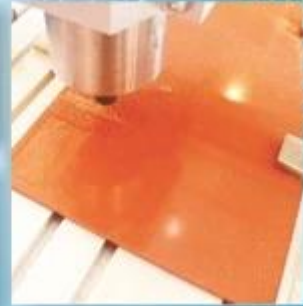
This 4 Axis [CNC 6040 Router](#) Small CNC Machine can be widely used as below:

- A. Widely used not only for Aluminum but also acrylic, brass, wood, PVC, PCB and so on.
- B. Ideal for milling, engraving, drilling & routing.
- C. For Industry, Technology Research, Advertising Design, Arts Creation, Teaching, Student Project and Hobby Purposes, Building Model Making, Advertising Signs, Artwork, Crafts, Aircraft Models, RC Model parts



www.chinacnczone.com

Live Demo



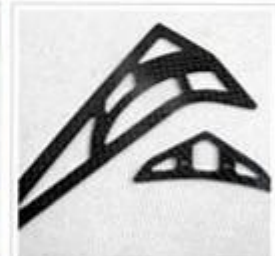
PVC



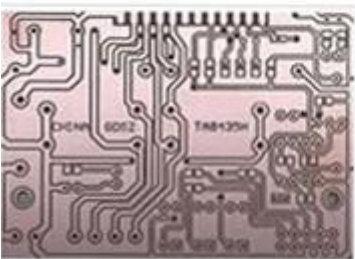
DOUBLE COLOR BOARDS



WOOD



CARBON FIBER REINFORCED PLASTICS PLATE



PCB



WAX



DOUBLE COLOR BOARDS



EPOXY TOOLING BOARD







QA Inspection Area



Mechanical Assembly Area



Machine Commissioning Area



Finish Products Area

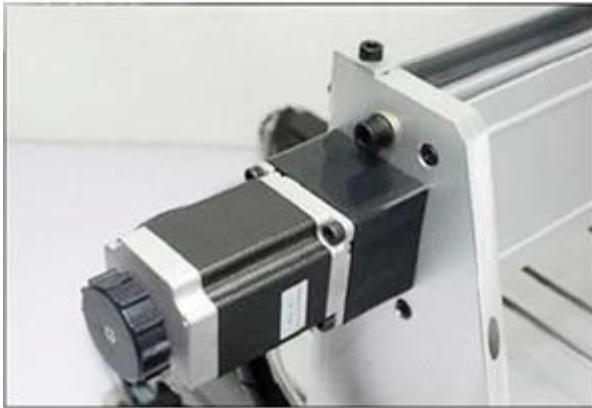


Packaging Area



Always be imitated, never be surmounted.

We all use well-designed professional aluminum to manufacture the machine. Almost all of the structural member are extruded by a dedicated mold. The production of large quantities so that we have a strong price competitiveness. Professional mold and materials so that our quality has been stable protection.



SHENZHEN SCOTLE TECHNOLOGY GROUP LIMITED

ChinaCNCzone, engrave your colorful life!

客户合影及公司文化 Customers and Company Culture

