

ChinaCNCzone S005 [Fiber Laser Engraver Marker Machine](#) Equipment System for Metal

Have 10W/20W/30W/50W for your selection

Work range [110x110mm](#) [150x150mm](#) [200x200mm](#) [220x220mm](#) [300x300mm](#) for selection

Desktop version

price Most competitive with high configuration.

Compared with our [mini CNC router](#) such as [CNC 6040](#), [CNC 6090](#), this Portable [Fiber Laser Marking Machine](#) is specially designed for metal and non-metal engraving

Main features for this [S005 Fiber Laser Engraver Machine Equipment System](#)

1. Optical Fiber Laser, environment friendly, easy maintenance.
2. Life of the laser can be up to 100000 hours.
3. Desktop version
4. Easy operation software, compatible with PHOTOSHOP, CORELDRAW, AUTOCAD
5. Runs without consumable spare parts, no need maintenance, great for continuous working.
6. The galvanometer scanning system is made of optical scanner and servo control of two parts, the whole system adopts new technology, new material, new design and manufacturing.
7. The smallest volume, suitable for harsh environment, friendly interface, easy operation.
8. Adopts the high quality, high energy, high stability fiber laser source, prime precision optical galvanometer assembly and the industry's top software.
9. Compact, lightweight, simple interface, flexible and adjustable processing direction.
10. The master switch, red light switch and galvanometer switch.
11. High precision scale.

This [S005 Fiber Laser Engraver Marker Machine Equipment System](#) mainly consists of four parts: [fiber laser](#), [galvanometer scanning system](#), [computer control system](#) and the [worktable](#)

Name	Origin(brand)	Remarks
Optical maser	Maxphotonics	Long service life, high reliability, fine beam quality
Galvo mirror	290mm	Fine marking, more quick and high reliability
F-θ lens	wavelength	High quality optical device
Marking software	Special marking Software (Ezcad2 software)	Powerful, simple and convenient operation, Auto-cad, CorelDraw, Photoshop software compatible form
Control cabinet	China	Optical fiber special cabinet, all the mold production, high seal

Do you know how to choose the laser marking machine?

①

Crack version board



Original JCZ board



VS

②

Software

Board card	Support of computer system	Work software
Original JCZ board	WinSeal XP/Win7/8/10	Can support the latest Ezcad software
Crack version board	WinSeal XP/Win7	Can only support to Ezcad2.9.4

02 Parameters

China  zone

Voltage :110V/220V

Fiber Laser Source:Maxphotonics (RAYCUS /IPG laser optional)

Output Power:10W/20W/30W/50W for selection

Laser wavelength:1064nm

Modulation frequency range:20-100kHz

Speed:0-8000mm/s

Precision:±0.003mm

Minimum line width:0.015mm

Minimum height of characters:0.15mm

Cooling way:Air cooling

Marking range:110x110mm 150x150mm 200x200mm 220X220mm 300X300mm

Laser power supply:0.5KW,220V/50Hz, 110V/60HZ

Rotary device:Optional

Weight:80KGS

Outside packing:100*75*158cm

Gross weight: 115KG

03 Product Images

China  zone











Caliper measures

Convenient and quick





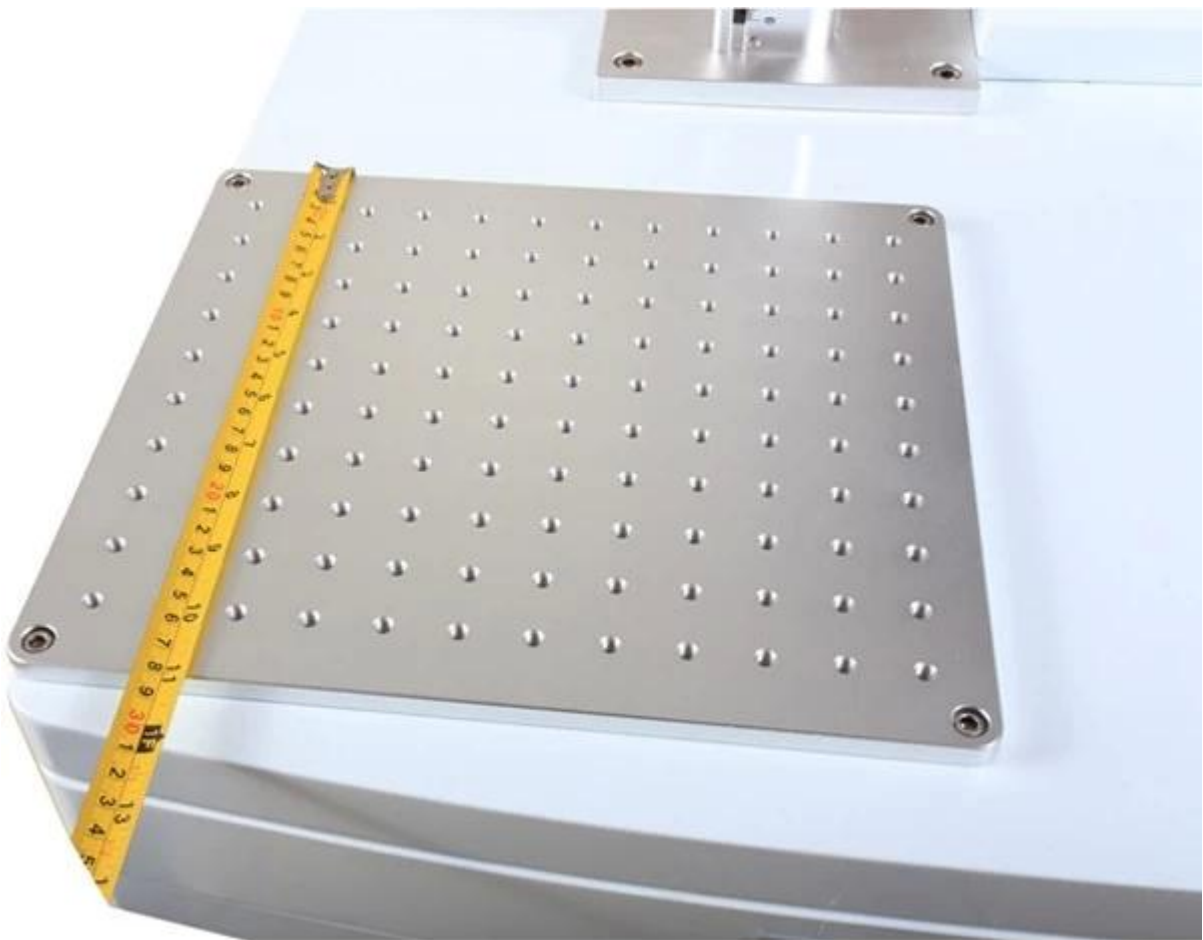
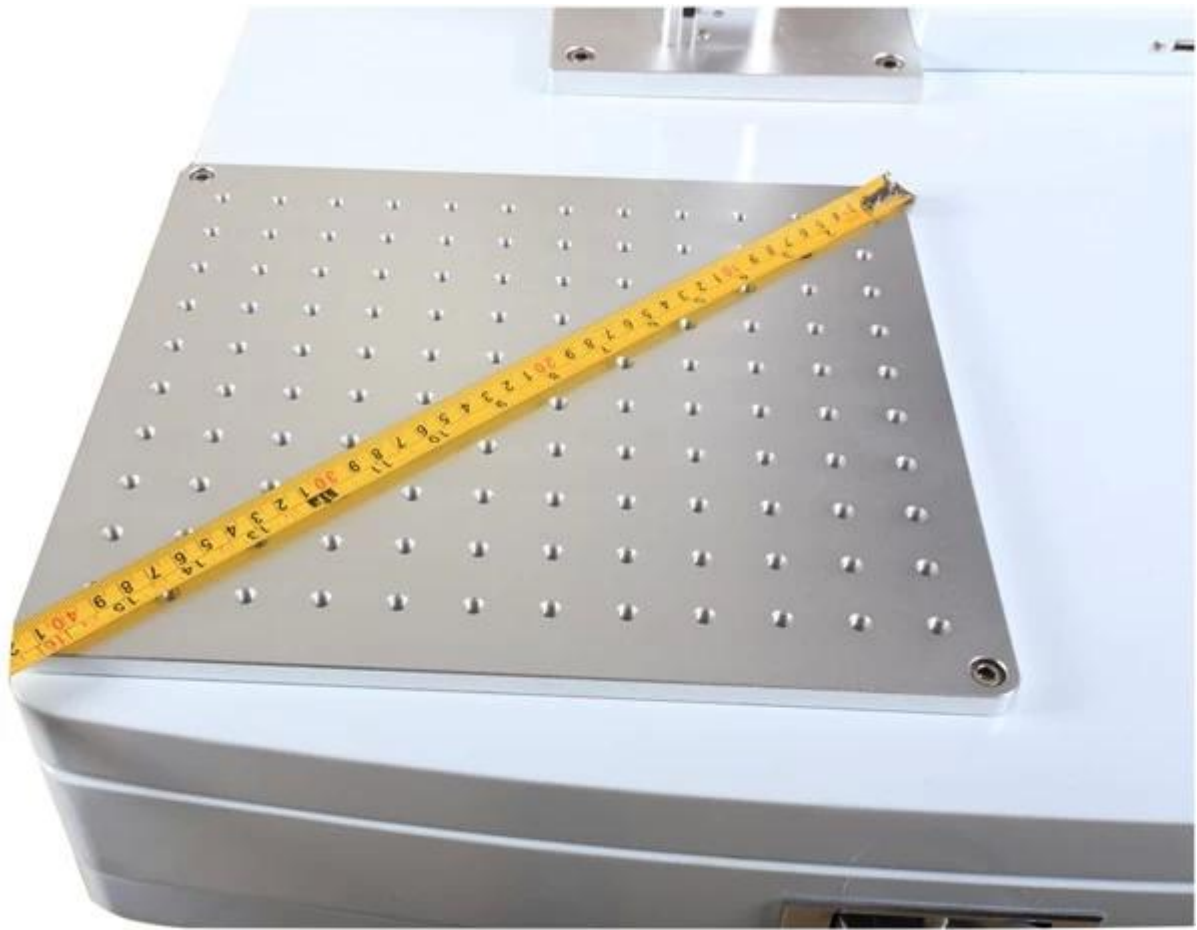


Main board switch

Laser switch

Vibration mirror switch





More details for this S005 10W/20W/30W/50W Fiber Laser Engraver Marker Machine Equipment System

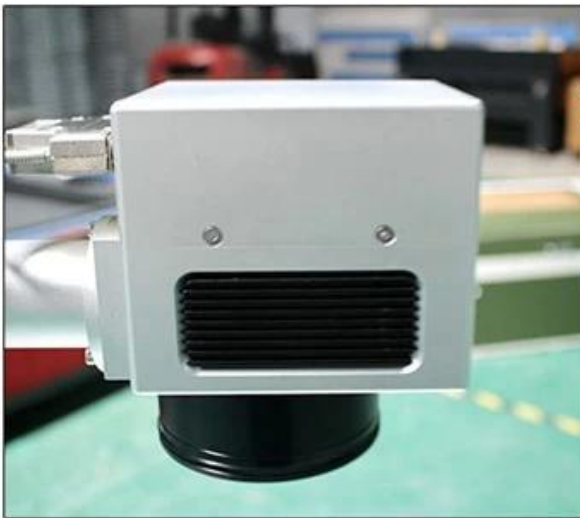
1.Mirror



Good sense of light

Uniform illumination

Compact, suitable for harsh environments



2.Galvanometer

Marking effect is good

No distortion

*Using a full set of German imported accessories,
laser and galvanometer laser long service life*

3.Elevator Shaft



Imports of high-quality

High-energy

Stable fiber lasers

*In a certain shock,vibration,high temperature or with ash,
etc.Also can work normally under the harsh enironment.*



4. Work Platform

Small size

compact structure

Suitable for bad environment laser realize laser range through fiber optic cable transmission

5. Control Panel

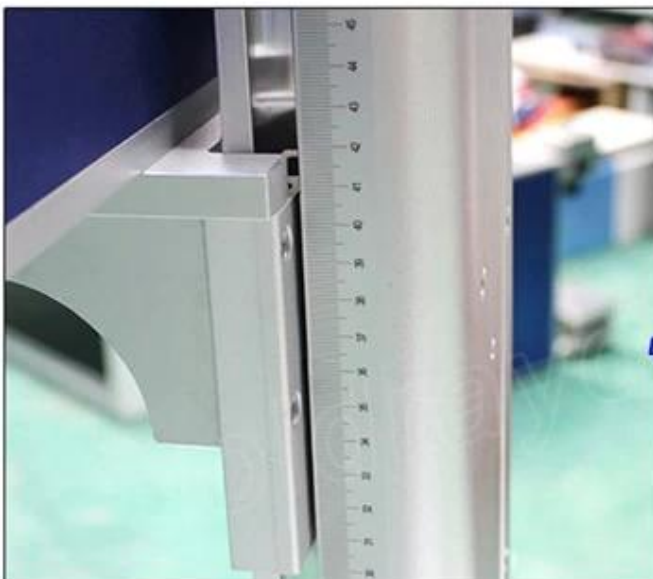
Humanized control system

New dustproof plug design



Control system is easy to learn

Can be used offline



6. Scale

High performance scale

Engraving effect more beautiful

A callbration more accurate

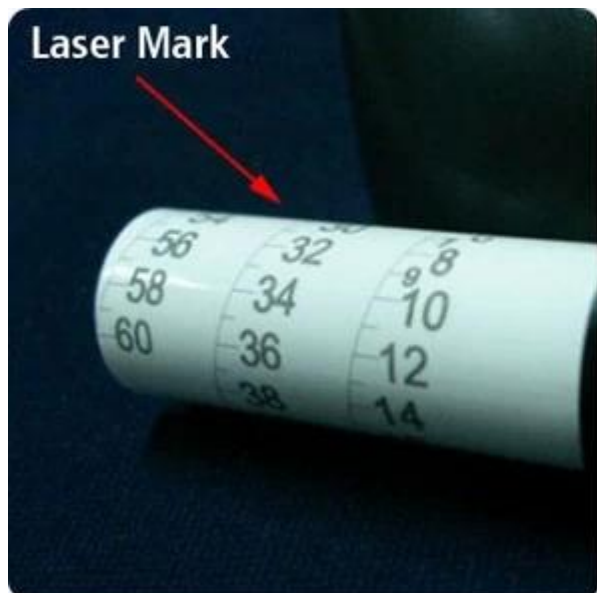
Application industrial for this S005 10W/20W/30W/50W Fiber Laser Engraver Marker Machine Equipment System for Metal : Jewellery, Keyboards of cell phone, Auto parts, Electronic components, Electronic appliance, Communication apparatus, sanitary wares, buckles, kitchenware, Sanitary equipment's, Hardware tools, Knife, Glasses, Clock, Cooker, Stainless steel products etc.

The material this S005 10W/20W/30W/50W Fiber Laser Engraver Marker Machine Equipment System for Metal

Engraving bar codes, decorative map, LOGO, factory number, production date, dial on all Metals (Gold, silver, copper, alloy, aluminum, steel, stainless steel, name card), Non-metal (Plastic: engineering plastic and hard plastic, etc. Used in electronic components integrated circuits, mobile communications, precision instruments, glasses watch and clocks, computer keyboard, accessories, auto parts, plastic buttons, plumbing fittings, sanitary ware, PVC pipe, medical equipment, packaging bottles, etc.)



Laser Mark



Laser Mark



Laser Mark



Laser Mark



Laser Mark



Laser Mark



Laser Mark

Materials: Stainless Steel



Laser Mark

Materials: Stainless Steel



Laser Mark



Laser Mark









ChinaCNCzone, engrave your colorful life!

客户合影及企业文化

