

## 01 Product Highlight

China  zone

**CNC 3040 PCB CNC Router** Machine for Milling and Drilling engraving and drilling.

**When use USB software, you can transfer the Gerber file into G-code very easily.**

**Outstanding features as below**

1. BALL Screw,high precision
2. [Original Mach3 software](#) can be provided.
3. 230W DC spindle .
4. Limited switch added.
5. Auto-Checking function, easy to set origin of Z axis
6. Technical support always available, video supported.
7. Software: compatible with Mach3 or [USB CNC software](#).
8. CE approved
9. [Can be connected with computer by parallel port and notebook by USB interface](#)
10. English manual available.
11. Can engrave material such acrylic, brass, wood, aluminum, PCB and so on.
12. From reliable & trustable profesional [China CNC Router manufacturer](#).
13. Have 4 axis and 3 axis for selection.



## 02 Parameters

China  zone

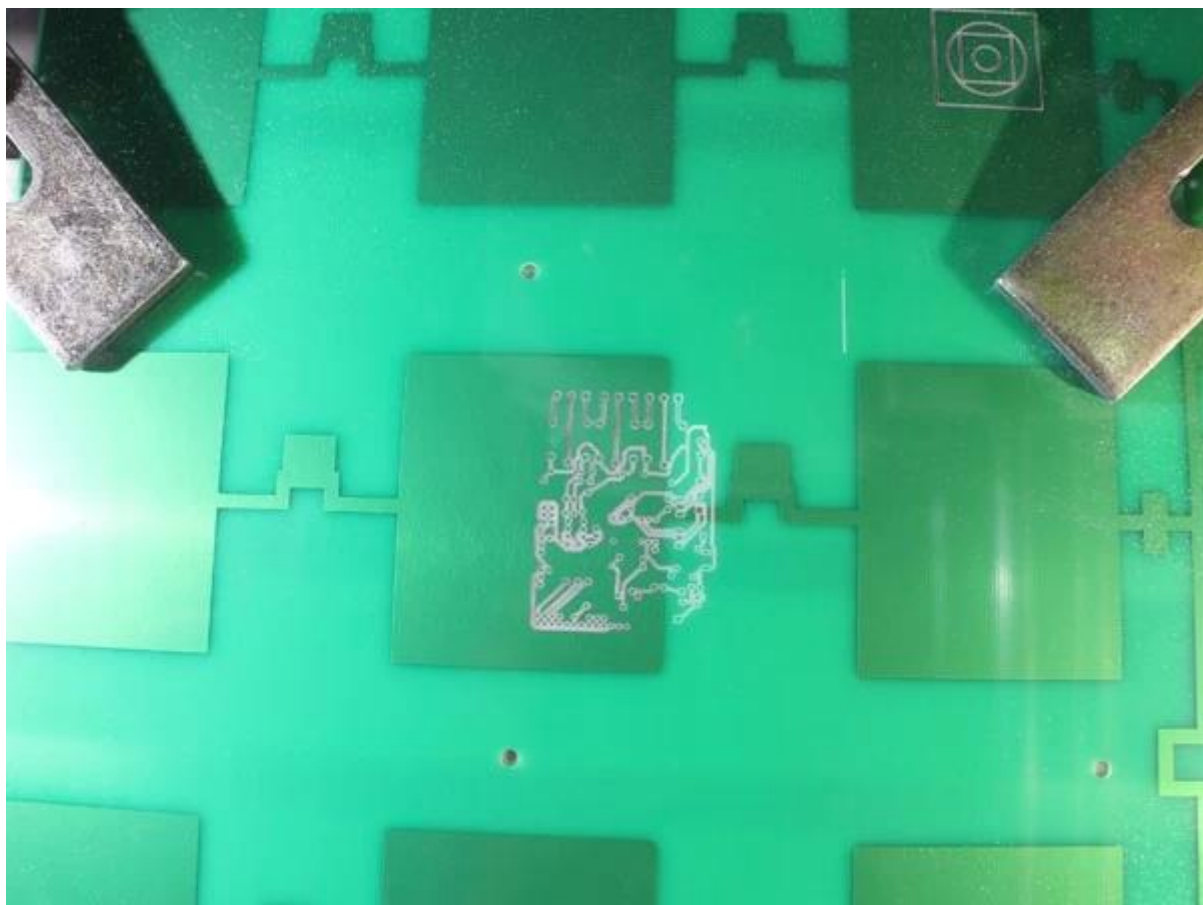
### CNC 3040 PCB CNC Router Machine Parameters

Effective working travel	370(X)mm*280(Y)mm*55(Z)mm
--------------------------	---------------------------

Shape dimension	625*510*410mm
Table size	520*320
Frame materials	aluminum alloy 6063 and 6061
Driving units X/Y/Z axis	1204 Ball Screw
Sliding units X axis	Dia.16mm chrome plate shafts
Sliding units Y axis	Dia.20mm chrome plate shafts
Sliding units Z axis	Dia.13mm chrome plate shafts
Stepping motor type	57 two-phase 2.5A
Spindle motor	Brand new 230w dc motor 1000~8000PRM/Min
Principal axis collet	ER11/3.175 mm
Repeat accuracy	0.05mm
Spindle precision	radial beat accyracy is 0.03 mm
Carving Instructions	G code, or any MACH3 support format file
Software environment	Windows xp/ Windows 7
Maximum speed	0-3500mm/min
Carving speed	300-2500mm/min (different materials different)
Computer connection	On board parallel port and USB port
Acceptable software	Mach3, USB CNC, EMC2
Protection	Emergency stop button
Operating Voltage	AC220V/110V

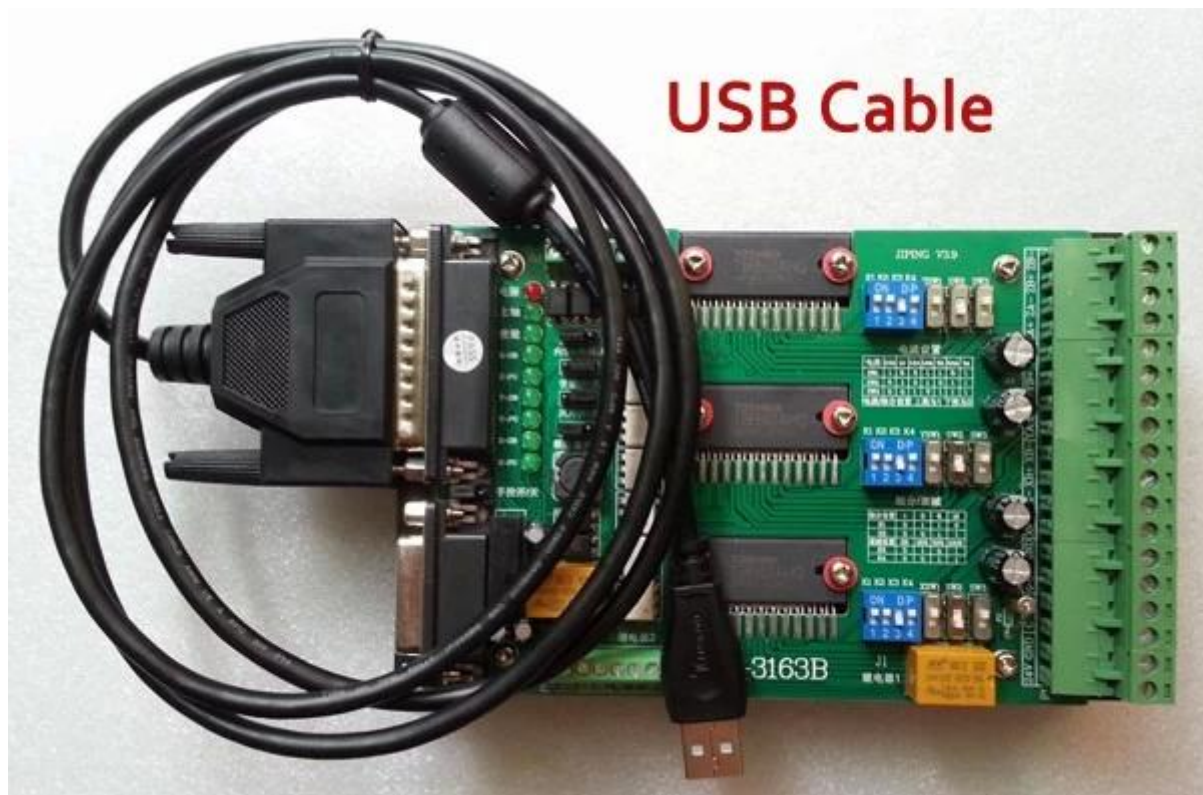




















## 05 Factory Tour

ChinaCNCzone

ChinaCNCzone team always welcome customers from all over the world to visit our factory, and let us provide the best different models [mini CNC routers](#) for users together.





**QA Inspection Area**



**Mechanical Assembly Area**



**Machine Commissioning Area**



**Finish Products Area**



**Packaging Area**



Always be imitated, never be surmounted.

We all use well-designed professional aluminum to manufacture the machine. Almost all of the structural member are extruded by a dedicated mold. The production of large quantities so that we have a strong price competitiveness. Professional mold and materials so that our quality has been stable protection.







# SHENZHEN SCOTLE TECHNOLOGY GROUP LIMITED

ChinaCNCzone, engrave your colorful life!

## 客户合影及公司文化 Customers and Company Culture



**Dear customers,**  
**Thank you for your supports and your coming!**



## **WorkShop**





