

Details:

3D Fiber Laser Marking Machine



Free Sample Test



24 Hours
Service Online



Technical Support



Remote Control
Guidance with PC



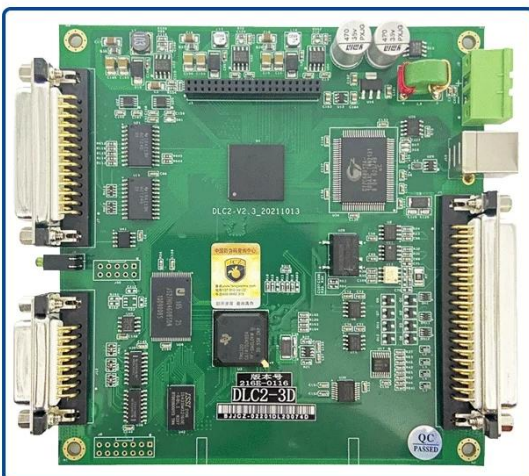
2 Years
Warranty



User Manual
and Videos

G3-3D Galvo Head

- Laser 3D scanning module Marking field and wavelength Customizable
- High precision calibration Marking with F-theta for better processing results
- JCZ 3D software is easy to operate with comprehensive functions High cost-effectiveness.
- Note: Various F-theta lens available and changeable.



Original BJJCZ

DLC Series Control Card

- Significant acceleration of data processing and needs for advanced processing met;
- Combination of two-dimensional and three-dimensional functions;

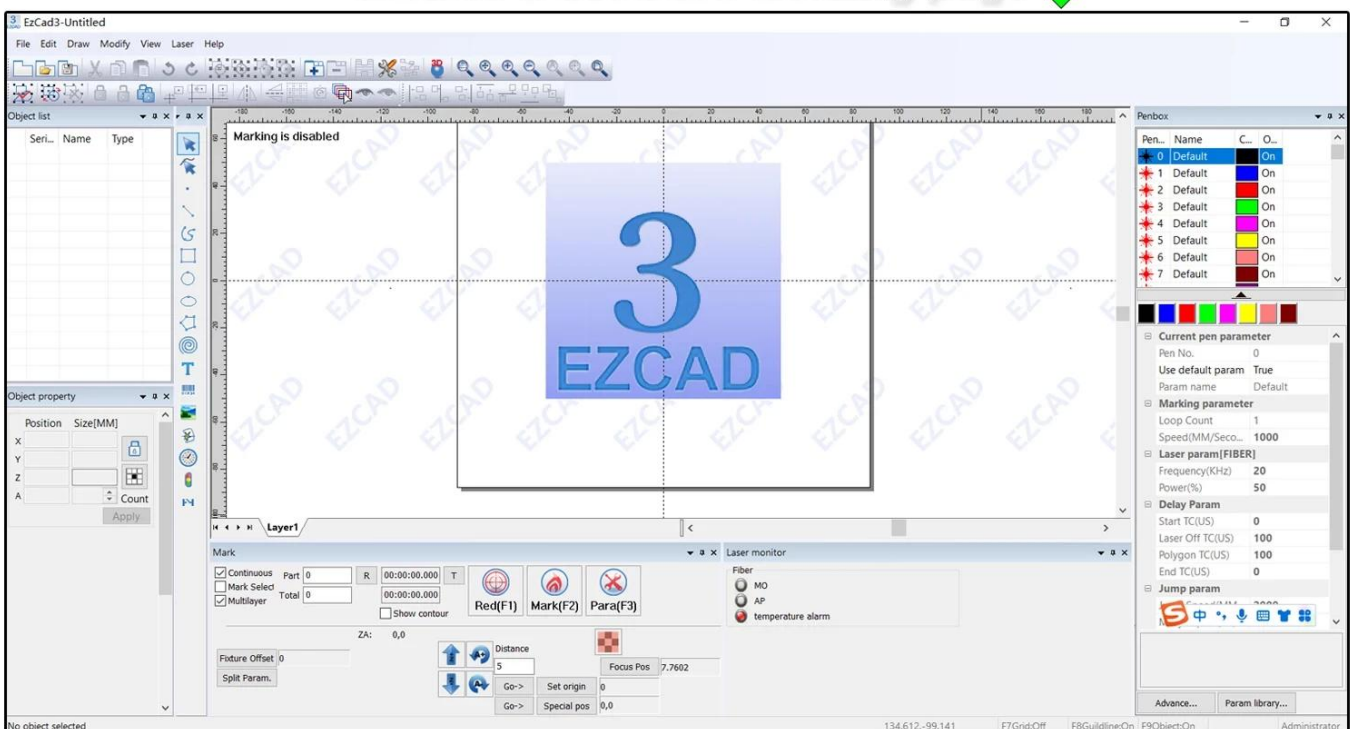


EZCAD 3 Software

- Support of large-format processing, high-performance motion control, and other functions;
- Ethernet Interface: no limitation of the transmission distance and remote control available;
- Support of various mainstream lasers.



EZCAD 3 software working page





JPT MOPA M7 200W Laser Source YDFLP-E2-200-M7-M-R

- Original JPT MOPA M7 Series laser source
- 200W MOPA M7 support deep engraving on metal
- High beam quality fiber output
- Superior reliability, long lifetime.

Quartz field lens advantages:

- High transmittance
- thermal stability
- chemical stability
- Low dispersion
- High refractive index
- Excellent thermal shock resistance



Mean Well(MW) Power Supply

- High work efficiency and stability
- Good heat dissipation and low working temperature.
- Single Output Switching Power Supply

About Shipping



**US address ship from US Warehouse,
Fedex Ground shipping in 3-7 days!**



**EU address ship from EU Warehouse,
EU local shipping in 4-8 days,
NO TAX&VAT to your door!**



**RU address ship from China,
NO TAX and duty free to your door in
18-25 days!**



Other countries address ship from CN by Express shipping!



Packing List



JPT Fiber laser machine



JPT laser source



D80 Rotary AXIS



OD7+Goggles



Foot Switch



Power cable



U disk (with Software & manual)

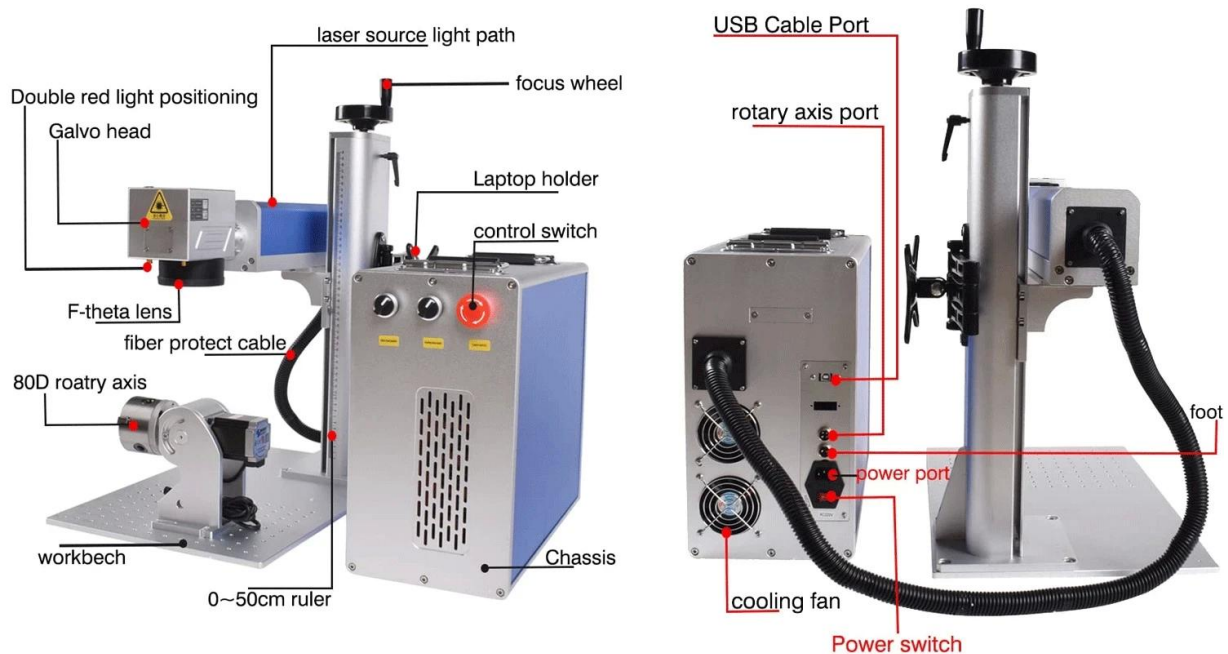


Wrench & position strip



Date line

Machine details



Extra accessories (optional)



Contact us if you want to buy above accessories.



How to choose the laser source of fiber laser marking machine?

Raycus /MAX /JPT are different laser source brands with the same function,
But Raycus and MAX are good at deep carving, hollow design and cutting,
while Jpt is good at carving with delicate touch.

Powerful laser can make deep engraving, like 100W, 200W,
if you want to make relief marking, you can choose 2.5D or 3D fiber laser version.



How to choose a lens? (Work area)

The same lens, the higher the power, the deeper the engraving,

The same power, smaller lens, deeper engraving,

The advantage of the larger lens is the larger engraving area,
the disadvantage is the weaker light.

The advantage of the smaller lens is that it can engrave deeper depths,
the disadvantage is the small engraving area.

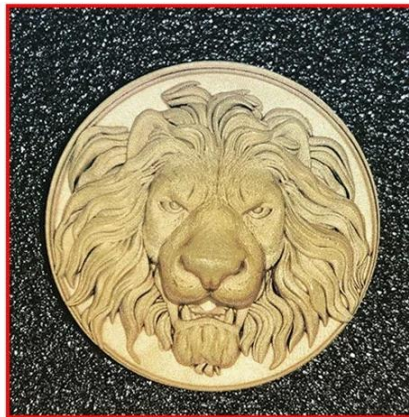
For metal cutting, we recommend that you choose a Raycus or MAX
laser source and a smaller lens,

if you want to save time and do faster working, we also suggest you to think
about JPT 100W or 200W.



Application

2.5D fiber laser Relief Engraving on metal:



Deep engraving:

