

JPT MOPA

30W/60W/100W JPT Mopa 2.5D

Fiber Laser Marking Machine



Electric Z Axis



JPT Mopa Laser Source



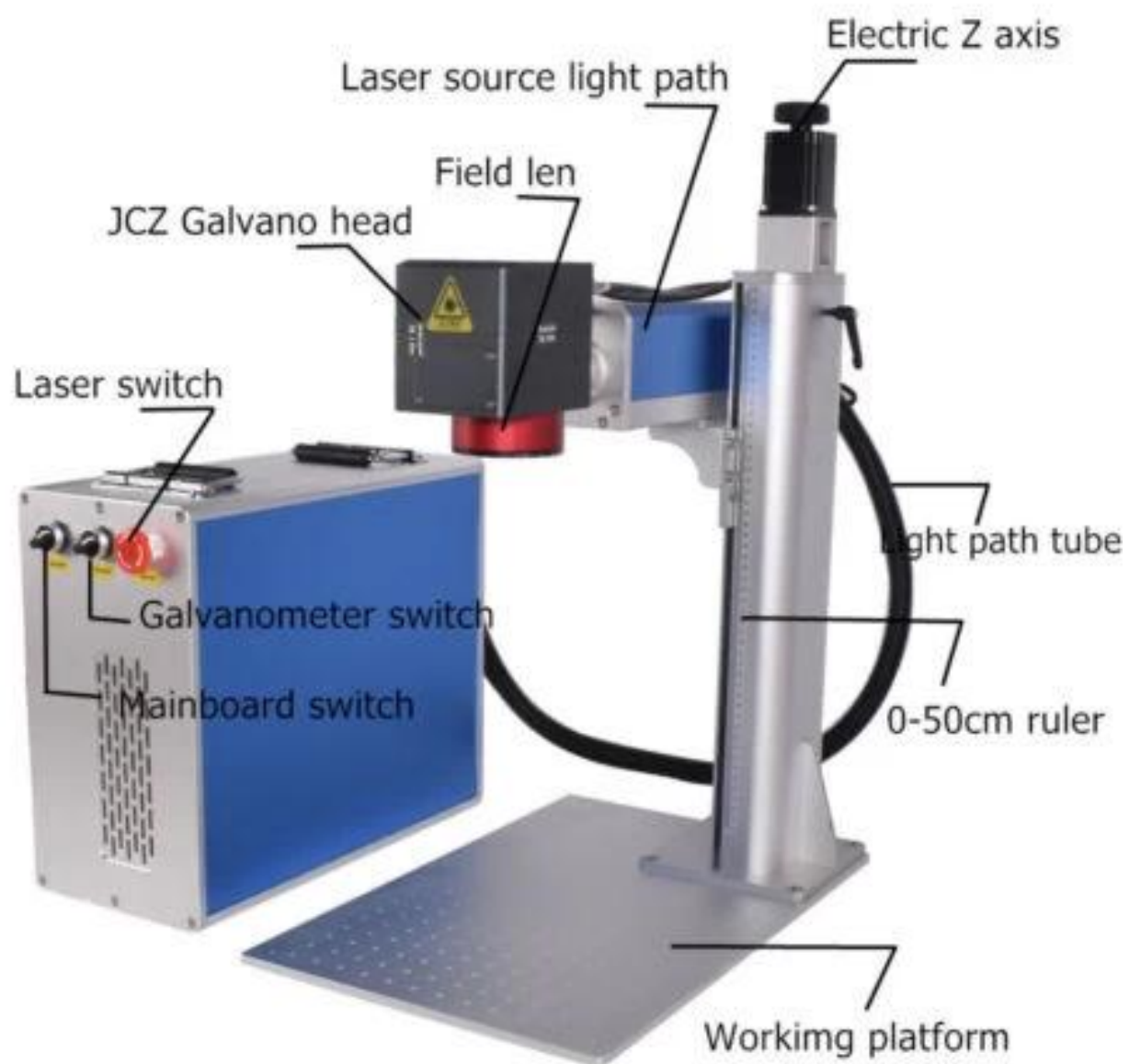
Color Marking



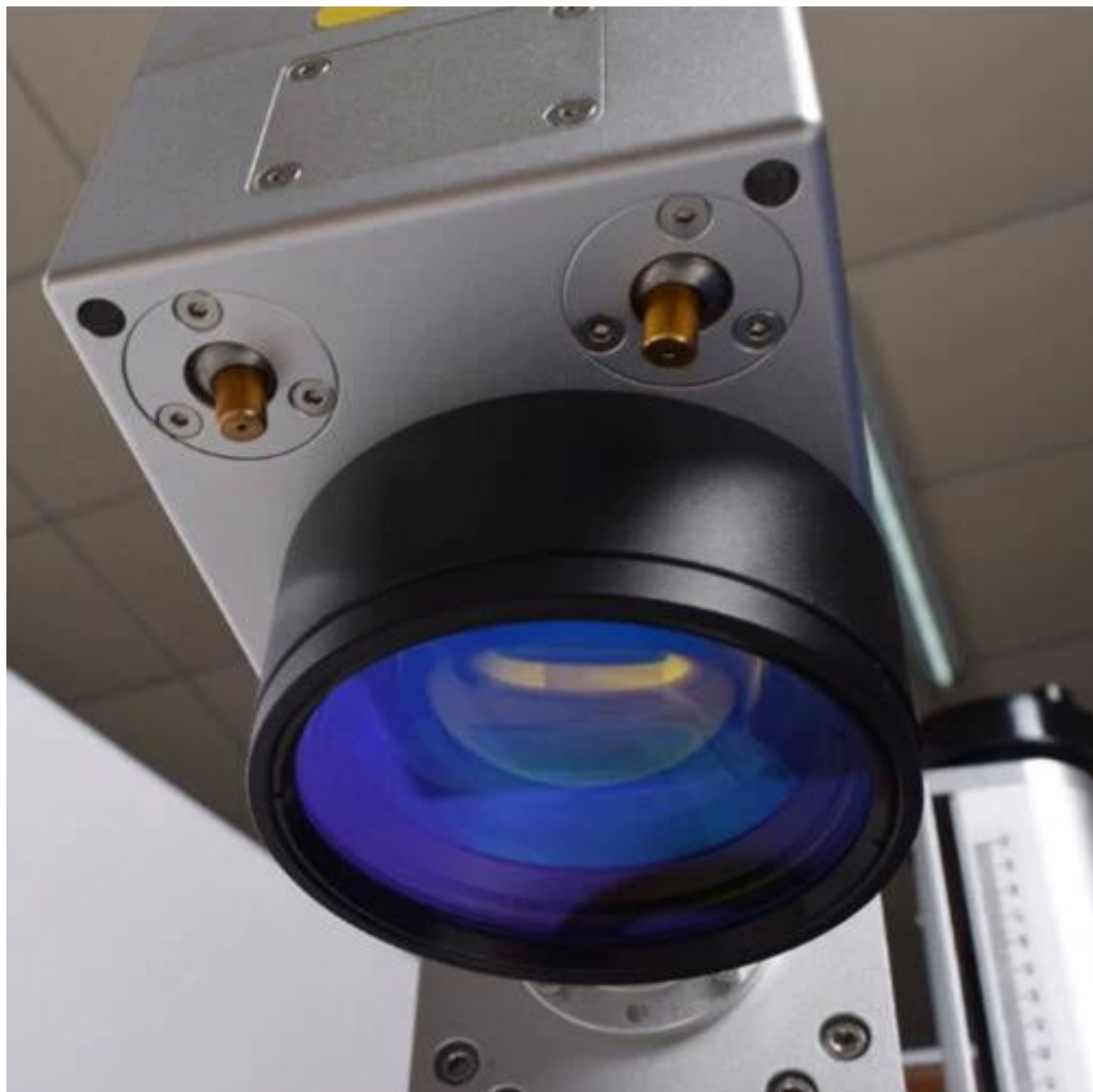
Deep Engraving



Relif Engraving
















Catalogue	Parameter For 2.5D/3D Fiber Marking Machine	
Laser Source Model	2.5D fiber marking machine	3D fiber marking machine
Machine Like		
Power	20W/30W/50W/60W/100W Can be selected	20W/30W/50W/60W/100W Can be selected
Control Board	BJCZ DLC Series Control Board	BJCZ DLC Series Control Board
Software	EZCAD 3 Software	EZCAD 3 Software
Rotary axis	Support D80 Rotary axis (Optional)	Support D80 Rotary axis (Optional)
Galvanometer Brand & Model	BJCZ G3 Pro-DLC	BJCZ G3-3D
Marking Area	300*300mm (75/110/175/200mm Optional)	300*300mm (110/175/200mm Optional)
Glasses	Included	Included
Foot Switch	Included	Included
Lifting Motor(Motorized Z Axis)	Supported	Custom made
Color Marking	Just 30W JPT M7 / 60W JPT M7/100W JPT M7 Laser source can support color marking. Other model laser source don't support color marking	Just 30W JPT M7 / 60W JPT M7/100W JPT M7 Laser source can support color marking. Other model laser source don't support color marking
Marking Speed	4000mm/s	4000mm/s
Positioning Speed	10000mm/s	10000mm/s
Tracking Error	0.25ms	0.25ms
Repetitive accuracy	<8μrad	<8μrad
Time for 1%	≤0.4ms	≤0.4ms
Power Supply	±15VDC, 3A	±15VDC, 3A
Wavelength	10600nm, 1064nm, 532nm, 355nm	1064nm, 532nm, 355nm
Lens Spot	10mm	10mm
Operation Temperature	25°C±10°C	25°C±10°C
Cooling Method	Air-Cooled	Air-Cooled
Supported System	Windows system	Windows system
Warranty	2 years	2 years
Package Size	75*58*48cm	75*58*48cm
Gross Weight	about 52kg	about 55kg
Application	It can be used for deep engraving, hardware processing, mold processing, vari-focal processing , etc.	It can be applied for mold processing, curved surface marking, surface treatment, deep engraving, etc.

Catalogue	Parameter For JPT Laser Source Fiber Marking Machine				
Laser Source Model	30W JPT LP Laser Source	50W JPT LP Laser Source	30W JPT M7 Laser Source	60W JPT M7 Laser Source	100W JPT M7 Laser Source
Machine Like					
Power	30W	50W	30W	60W	100W
Control Board	BJJCZ Board	BJJCZ Board	BJJCZ Board	BJJCZ Board	BJJCZ Board
Software	EZCAD 2	EZCAD 2	EZCAD2	EZCAD2	EZCAD2
Rotary axis	Support D80 Rotary axis (Optional)	Support D80 Rotary axis (Optional)	Support D80 Rotary axis (Optional)	Support D80 Rotary axis (Optional)	Support D80 Rotary axis (Optional)
Galvanometer Brand & Model	SINO SG7110 K9	SINO SG7110 K9	SINO SG7110 K9	SINO SG7110 K9	SINO SG7110 SI
Marking Area	300*300mm (110/175/200mm Optional)	300*300mm (110/175/200mm Optional)	300*300mm (110/175/200mm Optional)	300*300mm (110/175/200mm Optional)	300*300mm (110/175/200mm Optional)
Glasses	Included	Included	Included	Included	Included
Foot Switch	Included	Included	Included	Included	Included
Lifting Motor(Motorized Z Axis)	No(need custom made)	No(need custom made)	No(need custom made)	No(need custom made)	No(need custom made)
Double Red Dot Position	Included	Included	Included	Included	Included
Color Marking	No	No	Yes	Yes	Yes
M ²	< 1.5	< 1.8	< 1.4	< 1.5	< 1.4
Nominal Average Output Power	> 30W	> 50W	> 30W	> 60W	> 100W
Maximum Pulse Energy	0.8mJ	1.25mJ	0.8mJ	1.5mJ	1.5mJ
Pulse Repetition Rate Range	1 ~ 600kHz	1 ~ 600kHz	1 ~ 4000kHz	1 ~ 4000kHz	1 ~ 4000kHz
Pulse Duration	200ns	200ns	2 ~ 350ns	2 ~ 500s	2 ~ 500s
Output Power Stability	< 5%	< 5%	< 5%	< 5%	< 5%
Supply DC Voltage (VDC)	24V	24V	24V	24V	24V
Central Wavelength	1064nm	1064nm	1064nm	1064nm	1064nm
Output Beam Diameter	7±0.5mm	7±0.5mm	7±0.5mm	7±0.5mm	7±0.5mm
Operation Temperature	0-40℃	0-40℃	0-40℃	0-40℃	0-40℃
Cooling Method	Air-Cooled	Air-Cooled	Air-Cooled	Air-Cooled	Air-Cooled
Supported System	Windows system	Windows system	Windows system	Windows system	Windows system
Warranty	2 years	2 years	2 years	2 years	2 years
Package Size	77*75*45cm	77*75*45cm	77*75*45cm	77*75*45cm	77*75*45cm
Gross Weight	about 50-55kg	about 50-55kg	about 50-55kg	about 52-56kg	about 54-58kg

Packing List for 2.5D/3D Fiber Marking Machine



1X 2.5D/3D(Optional) Machine



JPT/Raycus/MAX Laser source (Optional)



Galvanometer (BJCZ G3 Pro-DLC/BJCZ G3-3D) Optional



70/110/175/200/300mm Fied Lens (Optional)



Rotary Axis (Optional)



USB Cable



Power Cable



Foot Switch



U disk for Software and Manual



Wrench



Fixed Fixture



Focusing ruler (for Auto Focus Machine)

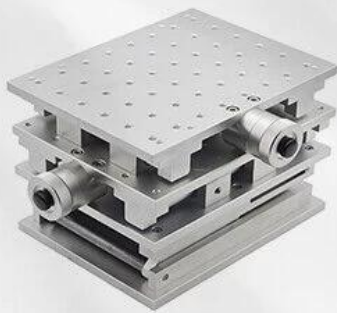


Glasses

» ROTATION AXIS AND PLATFORMS (OPTIONAL)



ROTARY CHUCK



2D / 3D TABLE AND EXTENDED PLATFORM



Obverse



Oblique



Height difference : 1mm

Speed: 1500

Power : 60

Frequency : 20

Machine : 2.5D 50W Raycus QB Fiber Laser Machine



Suitable for All Metal (Stainless steel, Aluminum, Titanium, Gold, Silver, Copper, etc), **Hard Plastic, Black Acrylic**



Application	Details	2D Marking Machine	2.5D Marking Machine	3D Marking Machine
	Metal Marking			
	Ring Engraving	 With Ring Rotation		
	Cylinder Engraving	 With Rotation		
	Height Difference Processing	 Marking Three Time	 Once Marking	 Once Marking
	Relief Engraving			
	Deep Engraving			
	Mold Processing			
	Curved Surface Engraving			
	Marking on Special Surface			
	Marking on Ball			