

1060 100W Ruida Control CO2 USB Laser Cutter Laser Cutting Engraving Machine with pass through door

Outstanding features as below

Working area: more than 600*1000mm

New DSP controller box no need to connect to computer.

17HW4410H Step motor

Industrial level laser head

Light system: Light system

Colour: blue and white

Adjustable Speed and Power

USB Interface

Air Assist, Remove heat and combustible gases from the cutting surface

Embedded Exhaust Fan, Easier install, Safer transport

Rotary Axis, Engrave any cylindrical object

Cellular platform

Intuitive Control Panel, Set Speed, power and more controls directly from the laser

Water Cooling and Protection System with a chiller.

Laser positing

Emergency Stop Button.

Larger Size, pass through door allow more than 600*1000mm working area.

Lifting platform is electric control, 0-25cm.

Laser focal length: 5CM

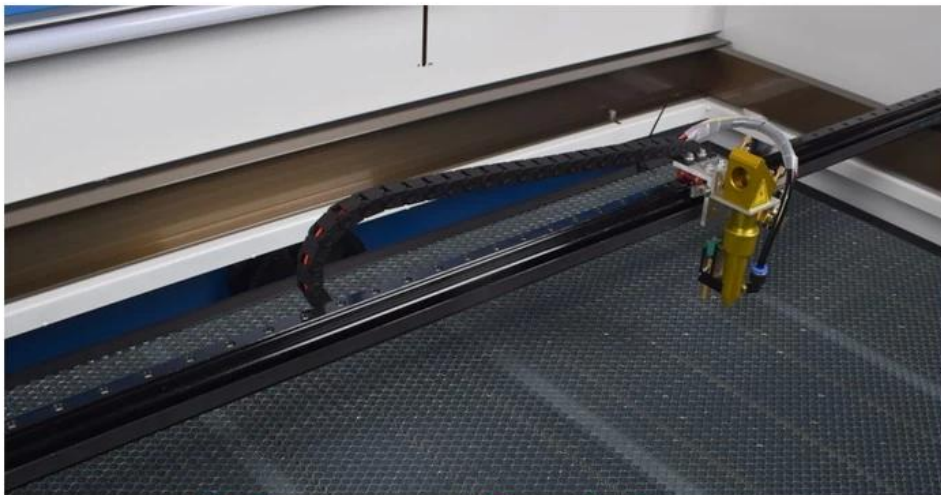
A limit switch let it can only work when the cover is closed.

There are Chinese, English, Russian, Portuguese, Italian languages in the control panel for your selection

Ruida 6445



Rotary Axis



Linear Guide

Packing list for this SL-1060 100W DSP Control CO2 USB Laser Cutter Laser Cutting Engraving Machine

- 1 x DSP 1060 100W CO2 Laser engraving machine
- 1 x Laser engraving software (down load link)
- 1 x User Manual (down load link)
- 1 x CW-3000 INDUSTRIAL CHILLER
- 1 x Air exhaust fan
- 1 x Air Pump
- 1 x Communication cable and USB cable

1 x Rotation axis

1 x Honeycomb work platform

Two packages□

1.Machine Package:Wooden box with foam inside

Package dimension:154*112*77CM

Gross weight:178KG

Package weight:267KG

2.Chiller Package:Carton box with foam inside

Package dimension:57*48*35CM

Gross weight:12KG

Package weight:20KG



Parameters for this DSP 1060 [CO2 Laser Cutter](#)

Total power	<300W
Laser power	100W
Laser type	CO2 laser engraving machine
Power supply	AC 220V/110V
Working area	600*1000 mm
Engraving depth	0-20 mm (different material differ)
Cutting depth	0-20 mm
Engraving speed	0-800mm/s
Cutting speed	0-800mm/s
Lifting platform	0-250 mm Honeycomb Worktable
Locating precision	<0.01 mm
Min shaping character	Character: 2*2mm, Letter: 1*1mm
Working temperature	5°C-45°C
Working humidity	5%-95%
Resolution ratio	≤1000dpi
Data transfer interface	USB 2.0 (offline)

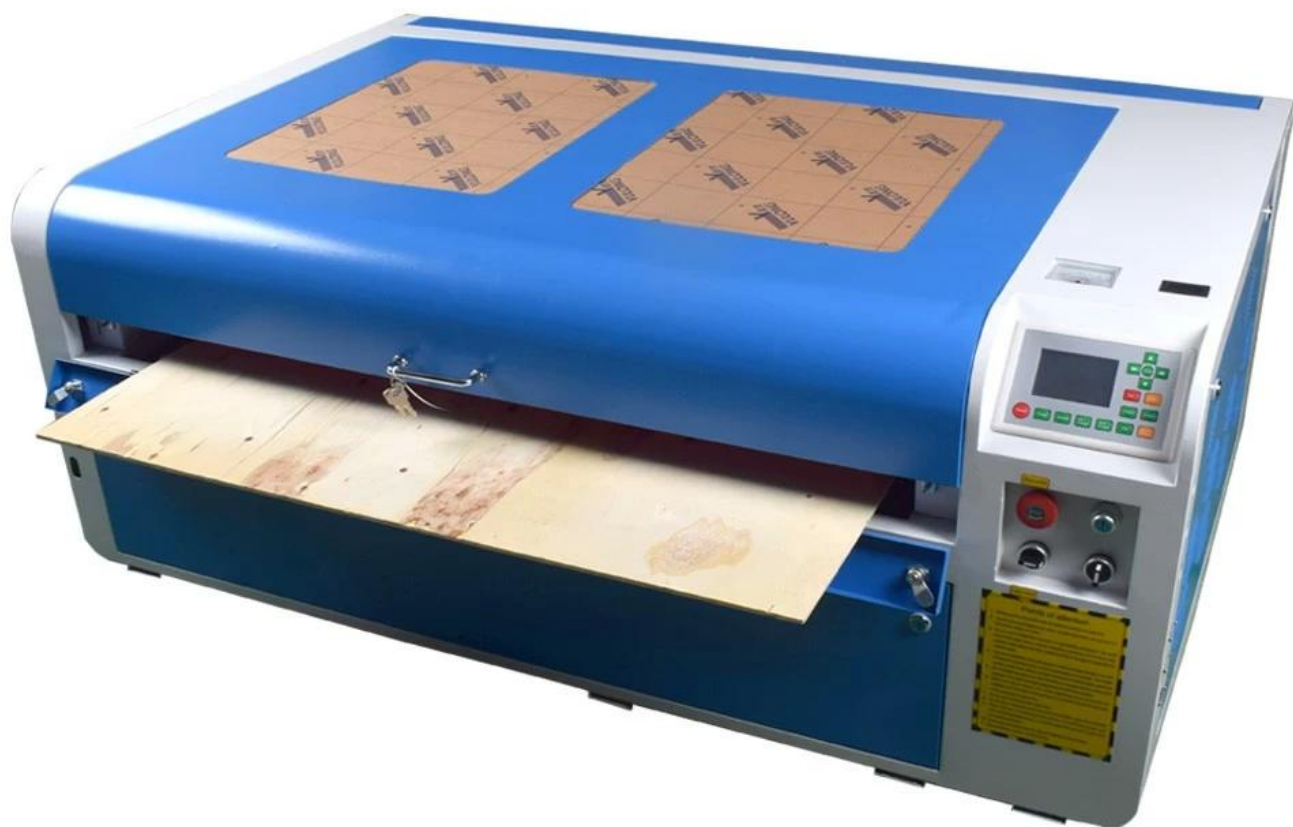
System environment	Windows XP / Win 7 / Win 8
Cooling	Water Cooling and protection system with chiller
Graphic Format Supported	The Files which CorelDraw & WinsealXP can identify (BMP,JPEG,PLT,CDR,AI,) TIFF,PCX,DIB,TIF
Compatible software	CorelDraw,WinsealXP
Color separation	NO
Sloping engraving	NO
Protection	Emergency stop buttom and Stop working when water broken
Machine Dimensions	140*75*58 cm
Packing	Wooden box with foam inside
Package Dimension	157*94*78 cm
Package Weight	230 kg (Counted by volumetric weight)

03 Product Images

China  zone

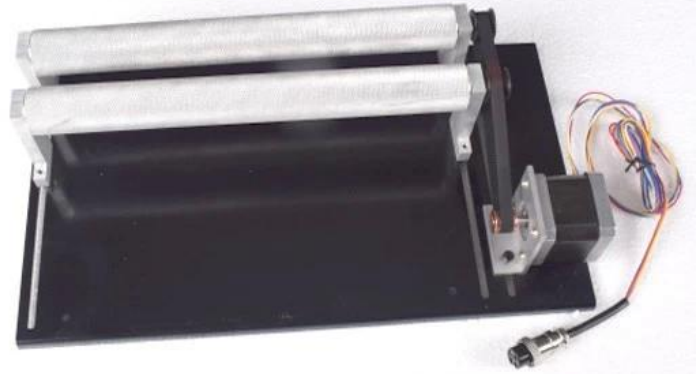






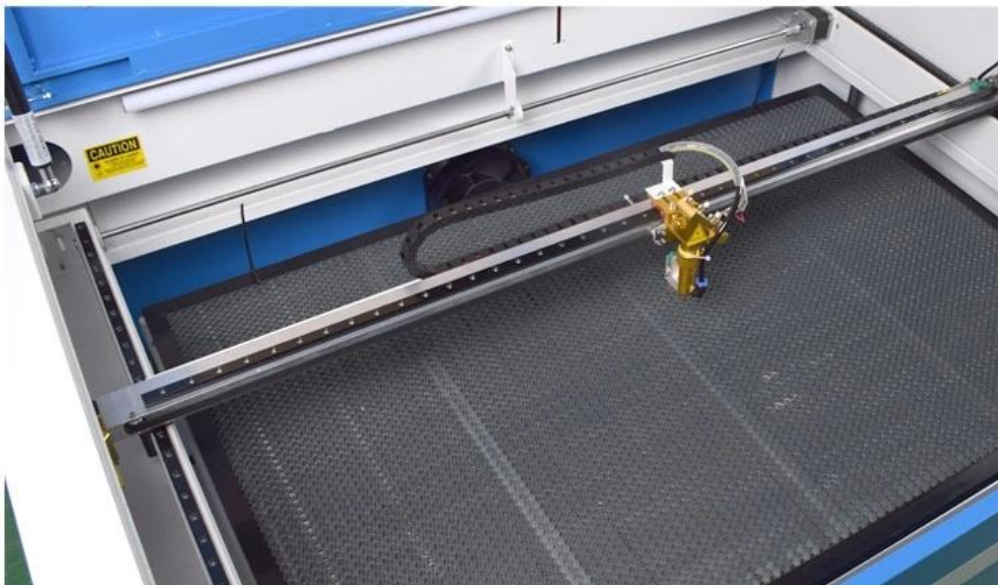


Ruida Controller



Rotary Axis

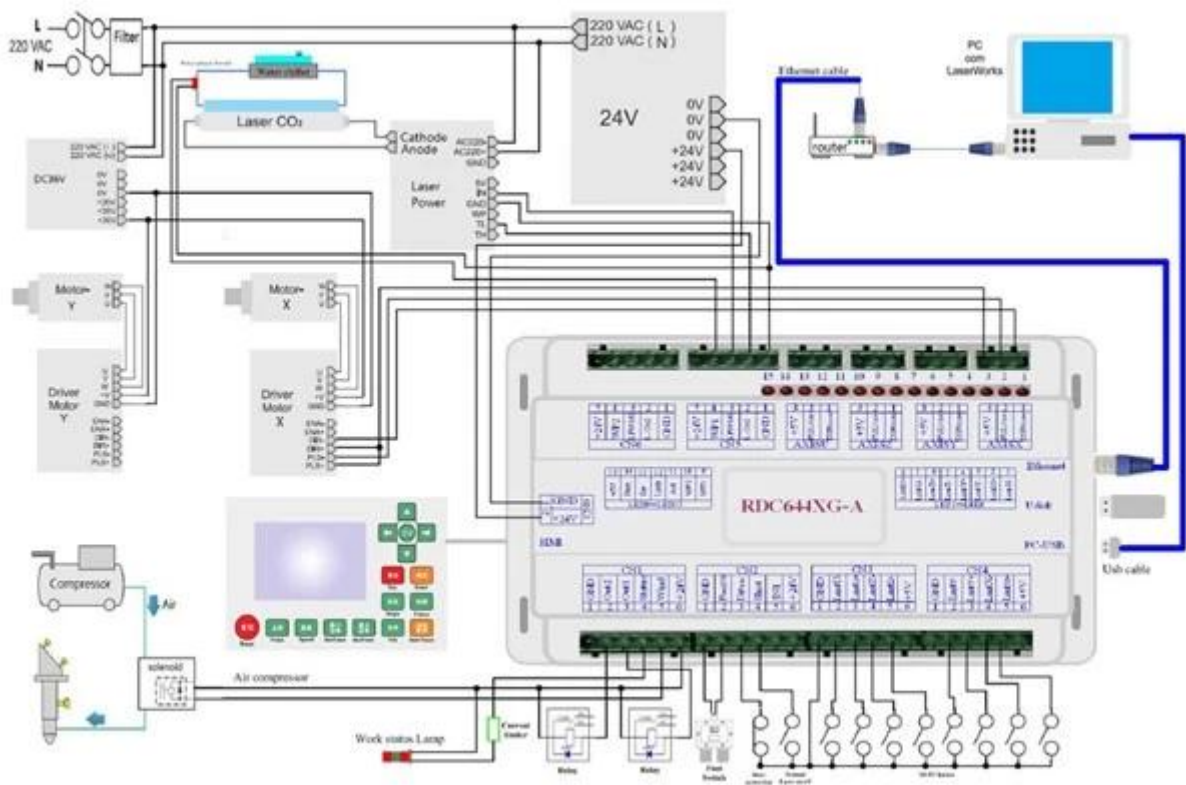
X & Y Axis Linear Guide



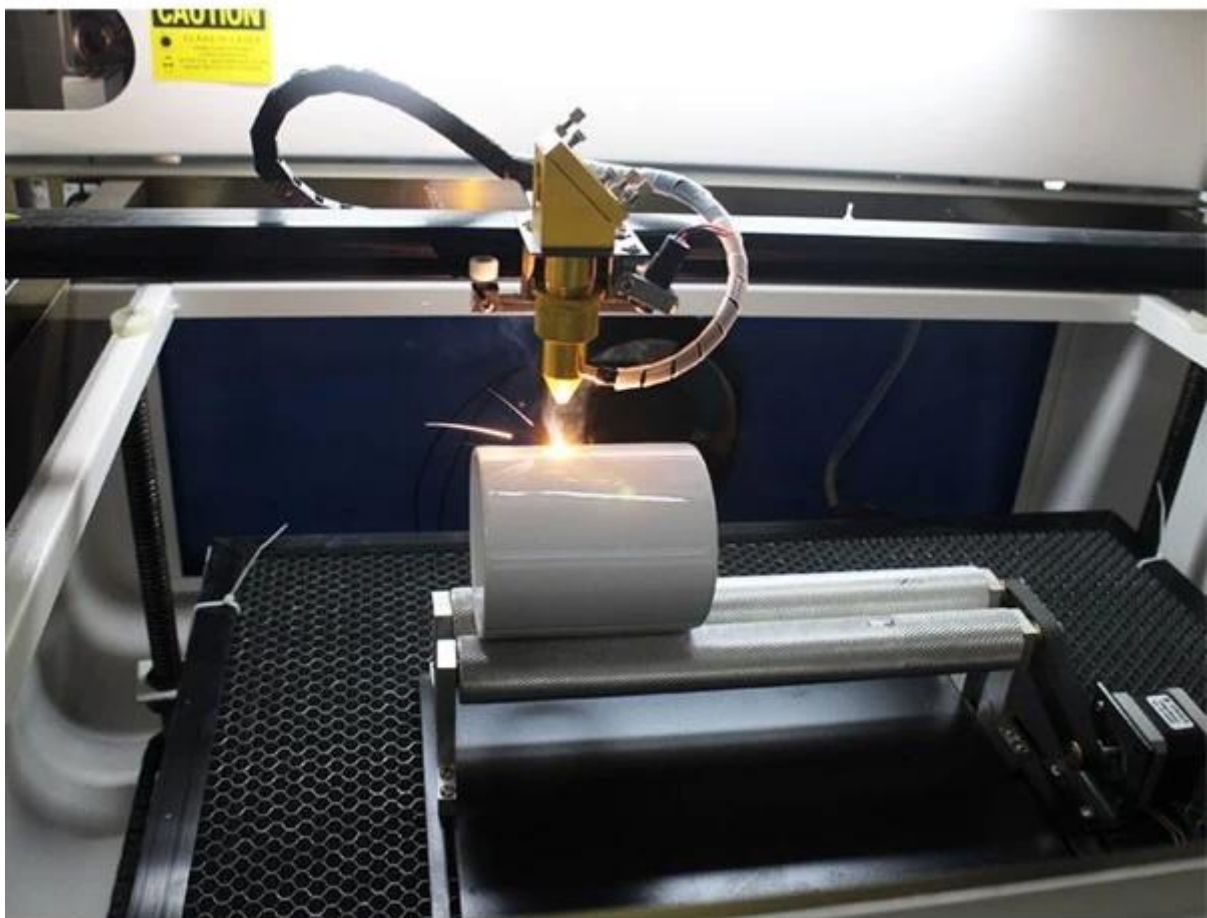
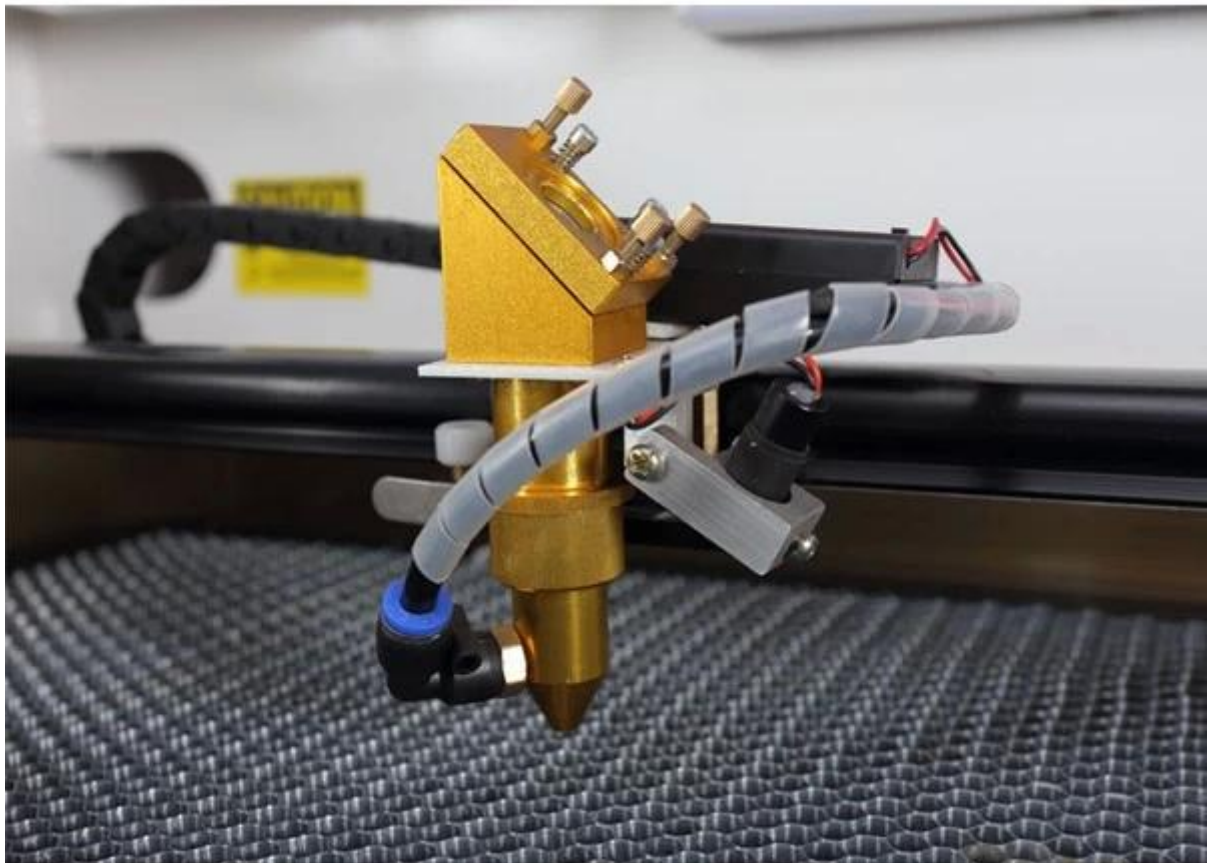




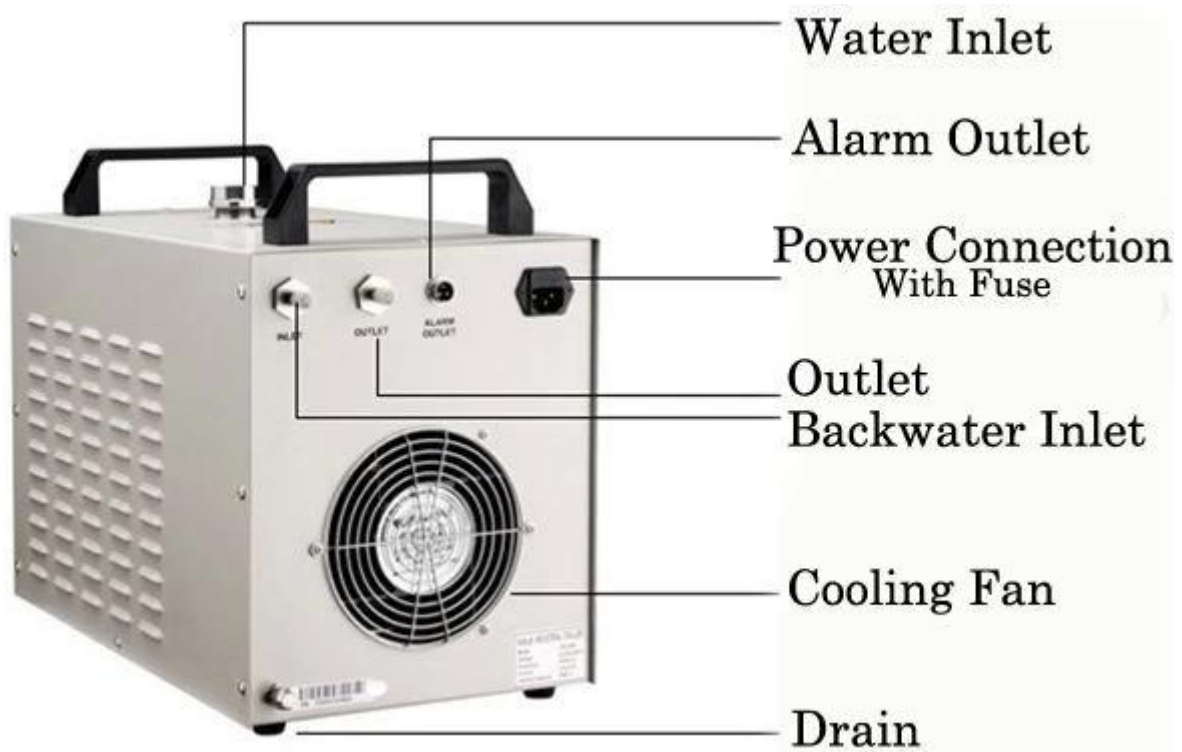




Red dot Positioning Function (showing outline or laser dot position)

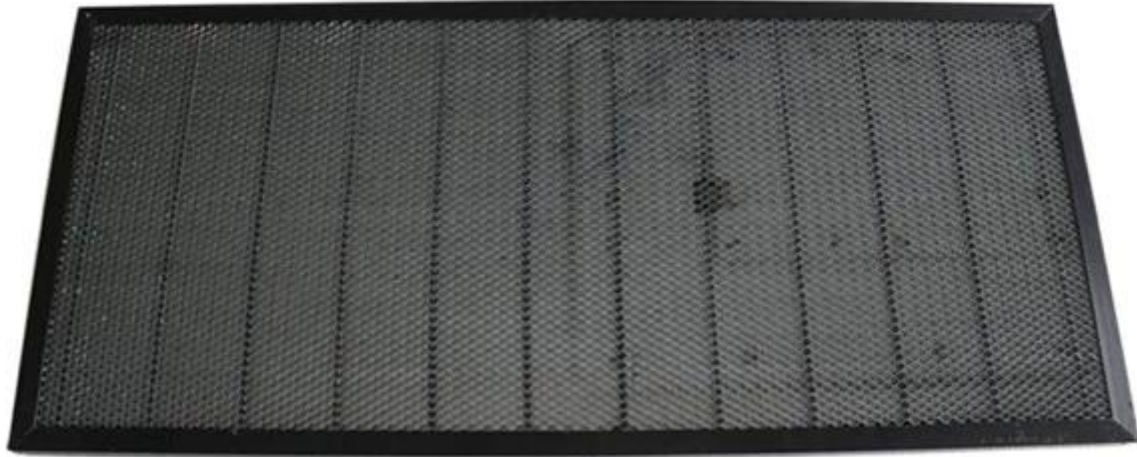


The CW-3000 INDUSTRIAL CHILLER



Honeycomb (for soft materials engraving and cutting)

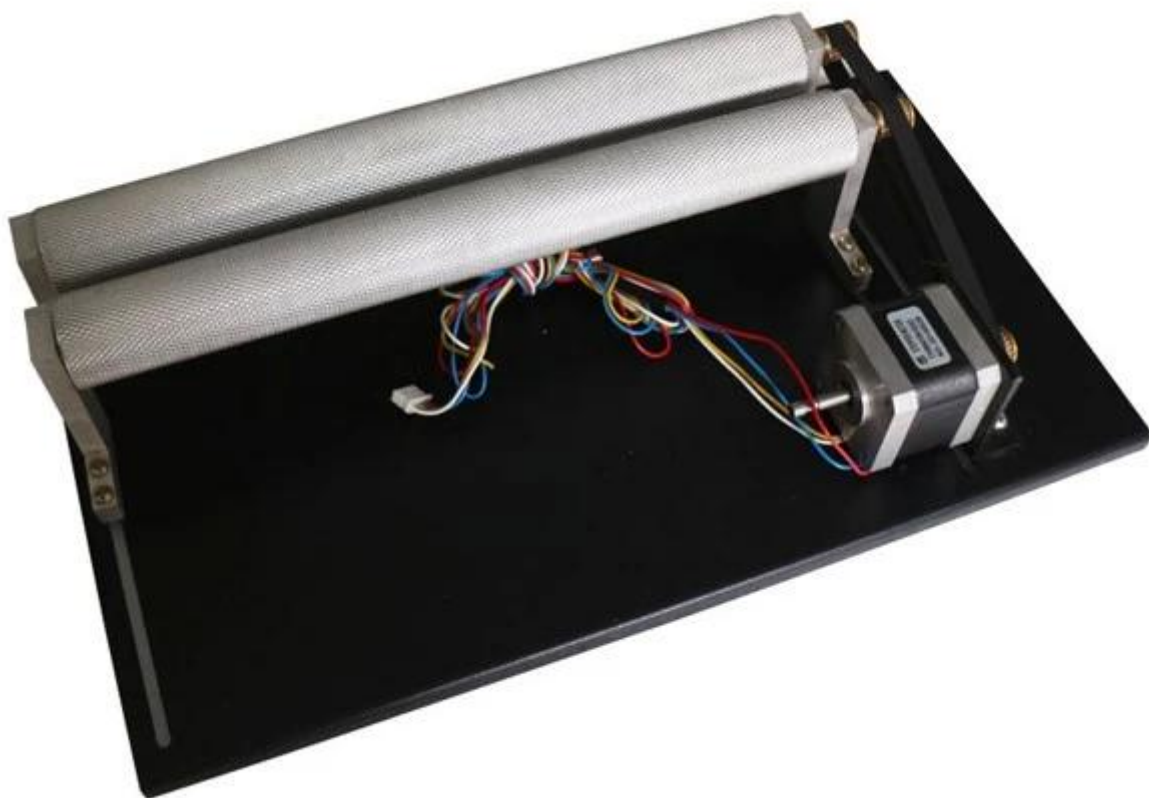
Honeycomb Work Bed Table Platform



Air Pump for this SL-1060 100W DSP Control CO2 USB Laser Cutter Laser Cutting Engraving Machine

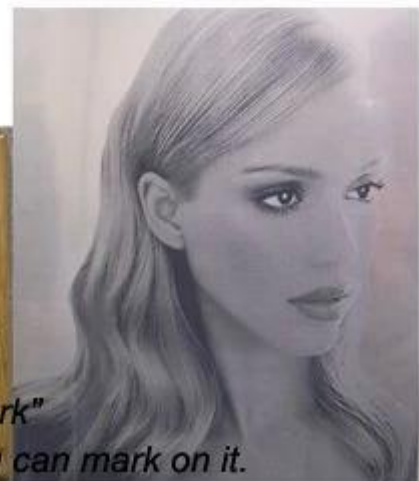


Rotatory Axis for this SL-1060 100W DSP Control CO2 USB Laser Cutter Laser Cutting Engraving Machine



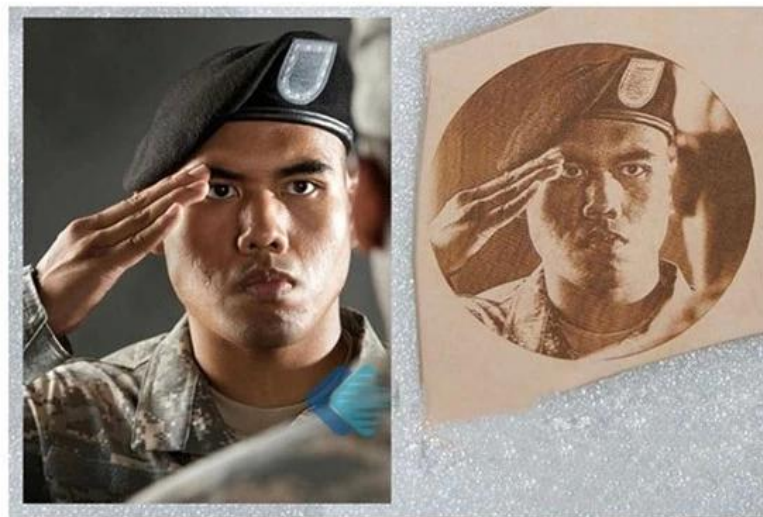
This SL-1060 100W DSP Control CO2 USB Laser Cutter Laser Cutting Engraving Machine is suitable to: woodworking, textile cutting, industrial prototyping, industrial marking, signmaking, medical part marking, aerospace, architectural modeling, specialty advertising, plastics fabricating, flexo, point of purchase, rubber stamps, picture framing, gift manufacturing, bar coding, engraving, gasket cutting, puzzles, cabinetry, awards & recognition, personalized pens, door pulls, cut scroll patterns, games & toys, finger joints, inlays & overlays, fraternity paddles, music boxes, light switch plates, jewelry boxes, parts marking, router templates, desk .

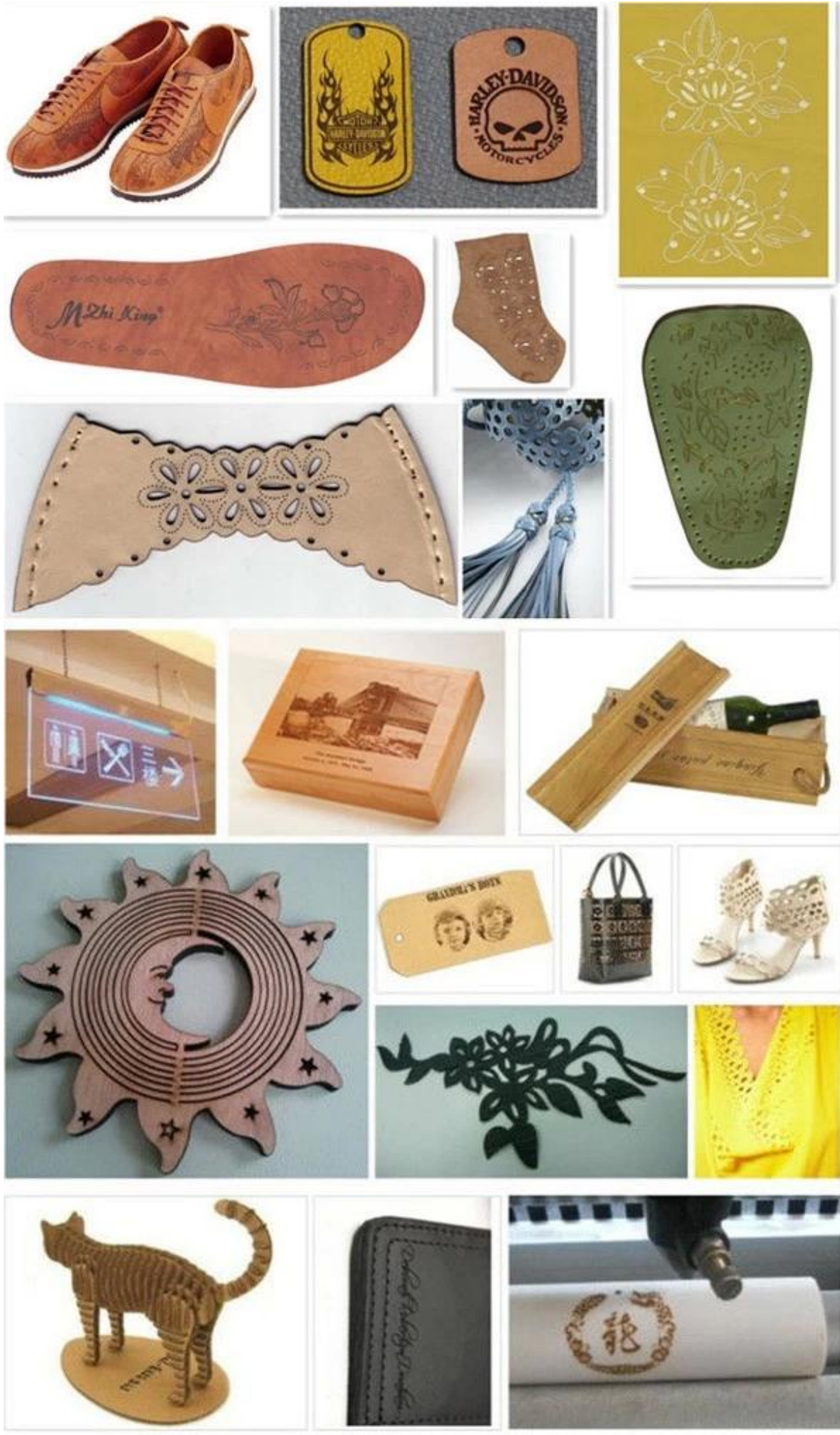
Material	Engrave	Cut
Wood	Yes	Yes
Jade	Yes	
Acrylic	Yes	Yes
Glass	Yes	
Ceramic	Yes	
Delrin	Yes	Yes
Cloth	Yes	Yes
Leather	Yes	Yes
Marble	Yes	
Matte Board	Yes	Yes
Melamine	Yes	Yes
Paper	Yes	Yes
Mylar	Yes	Yes
Press Board	Yes	Yes
Rubber	Yes	Yes
Wood Veneer	Yes	Yes
Fiberglass	Yes	Yes
Painted Metals	Yes	
Tile	Yes	
Plastic	Yes	Yes
Cork	Yes	Yes
Corian	Yes	Yes
Anodized Aluminum	Yes	
Ceramics	Yes	
Stainless Steel	*	
Brass	*	



*******means you have to use a spray called **"thermark"** to spray the surface of the material and then you can mark on it.







Material	Type	Thickness	Speed
Acrylic	Engrave	15-20MM	2mm/s
	Cut		
Soft wood	Engrave	10MM	6mm/s
	Cut		
Leather	Engrave		30mm/s
	Cut		
Plastic	Engrave		Depending on the material
	Cut		
Glass	Engrave	0.1-0.2MM	Can't
	Cut	Can't	
Plexiglass	Engrave	Effect is not as good as acrylic	Speed slower than the acrylic
	Cut		
PVC	Engrave	Same with acrylic	Same with acrylic
	Cut		
Cloth	Engrave	Usually thin material	50mm/s
	Cut		
Rubber	Engrave	5mm	10mm/s
	Cut		
Bamboo	Engrave	10mm	4mm/s
	Cut		

05 Factory Tour

ChinaCCzone









Kind Note: You may be interested in the following article:

[How to Connect the Water Chiller & Air Pump to ChinaCNCzone Desktop CO2 Laser Engraving Machine?](#)