

3 CNC 6090 DSP 2200W 4

150 CNC 100





- SD
- Wi SD
- 2.2KG powerfu
- 
- YouTube

**DSP**

- DSP
- TF
- 
- G

**6090 CNC 4**

- USB
- 
- 3 Mach3
- PCB
- 
- 
- Z
- 
- broaded
- 
- & CNC



<b>3 CNC 6090 4</b>	
尺寸	X860mm * Y630mm * Z480mm
Max.workpiece	X600mm * Y900mm * Z150mm
重量	约6063 6061
最大行程	≤150mm
行程	X 1605
	Y 2005
	Z 1605

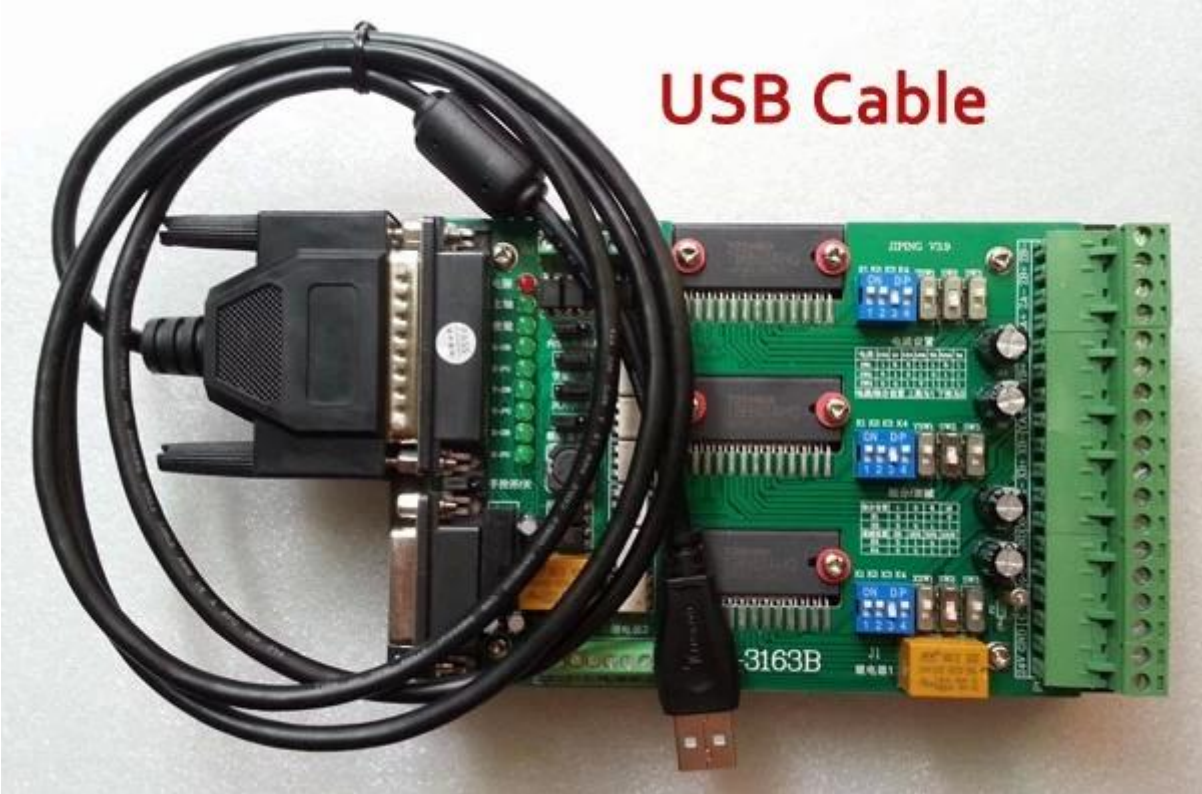
XY轴行程	X轴 Dia.30mm Y轴 Dia.30mm Z轴 Dia.16mm
XY轴行程	570*760 3A 150N.cm
XY轴行程	XY轴 2.2kw 24000RPM
XY轴行程	ER16-A 3*10
XY轴行程	< = 0.05
XY轴行程	XY轴 acuities 0.03
XY轴行程	G 代码/ TAB 代码/ NC 代码/ NCC 代码
XY轴行程	4000
XY轴行程	0~2500
XY轴行程	G 代码
XY轴行程	XY 轴行程
XY轴行程	AC110V / AC220V
6090 CNC	
XY轴行程	136 * 116 * 92
XY轴行程	34
XY轴行程	50
XY轴行程	1:03
XY轴行程	0.1







# USB Cable

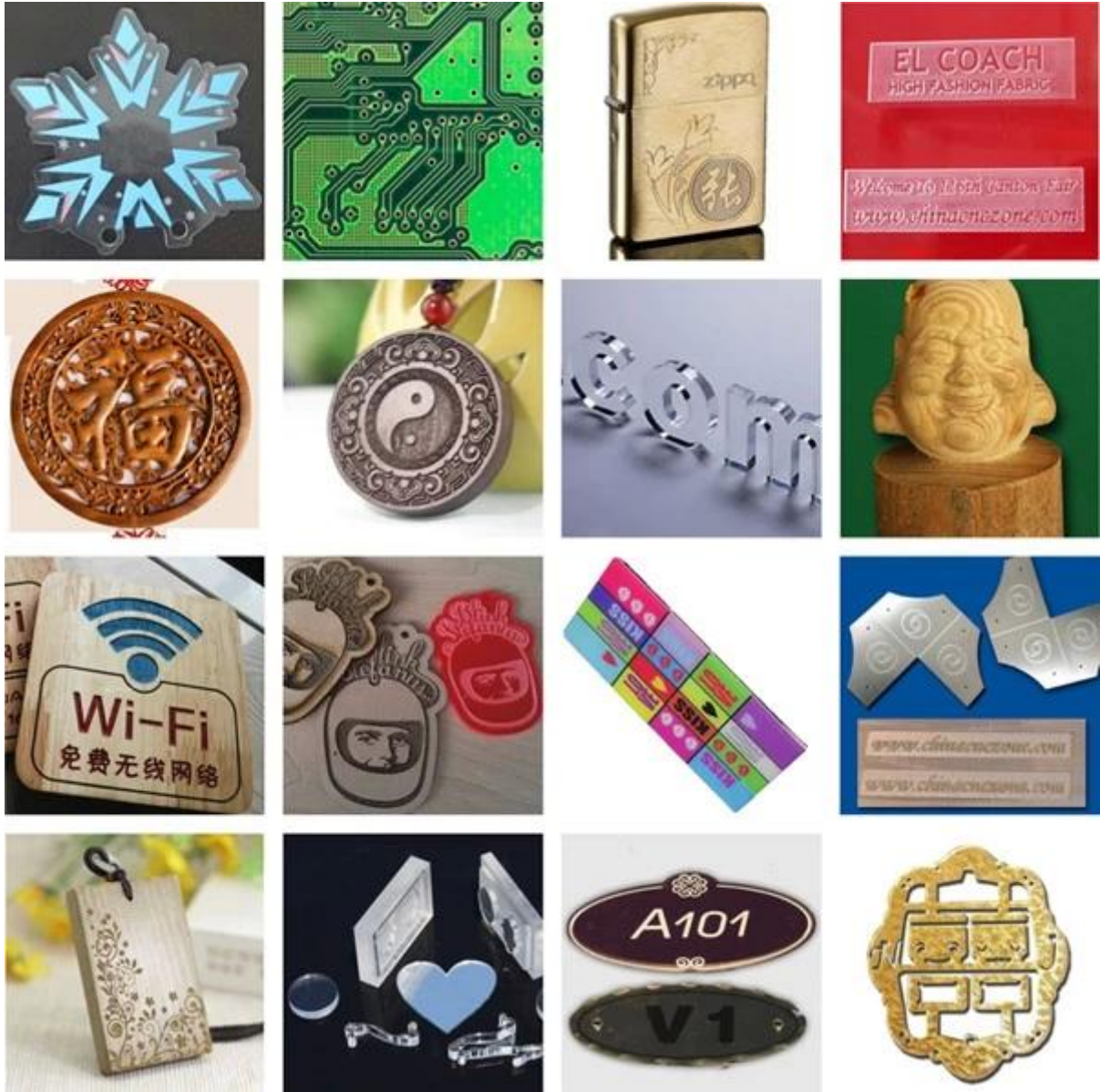




3 CNC 6090 4







**05** *Factory Tour* **ChinaCNCzone**

ChinaCNCzone 提供不同材料、不同规格、不同形状、不同尺寸、不同精度、不同表面处理的 CNC 加工服务。





**QA Inspection Area**



**Mechanical Assembly Area**



**Machine Commissioning Area**



**Finish Products Area**

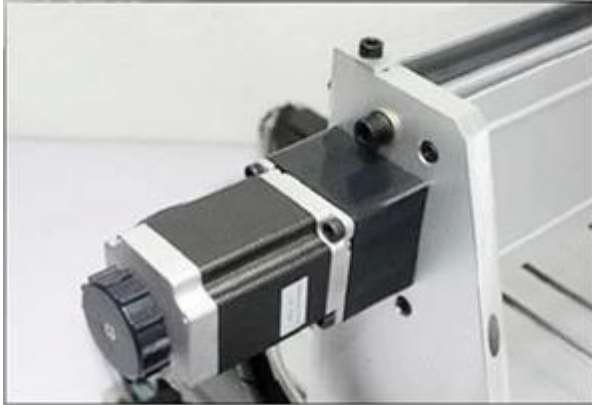


**Packaging Area**



Always be imitated, never be surmounted.

We all use well-designed professional aluminum to manufacture the machine. Almost all of the structural member are extruded by a dedicated mold. The production of large quantities so that we have a strong price competitiveness. Professional mold and materials so that our quality has been stable protection.







# SHENZHEN SCOTLE TECHNOLOGY GROUP LIMITED

ChinaCNCzone, engrave your colorful life!

## 客户合影及公司文化 Customers and Company Culture

