

01

Product Highlight



CNC6040Z CNC 2200W

1. 2200W

2. 3-axis

3. 3-axis

4. 3-axis

5. 3-axis

6. 3-axis

7. 3-axis

8. 3-axis

9. 3-axis

10. Can 3-axis

11. 80mm

12. CNC 6040Z 3-axis

13. HY-3040 CNC 6090 2200W

14. CNC

P.S. 3-axis



02

Parameters



CNC6040Z CNC Machine Parameters

375 X	535 Y	65 Z
-------	-------	------

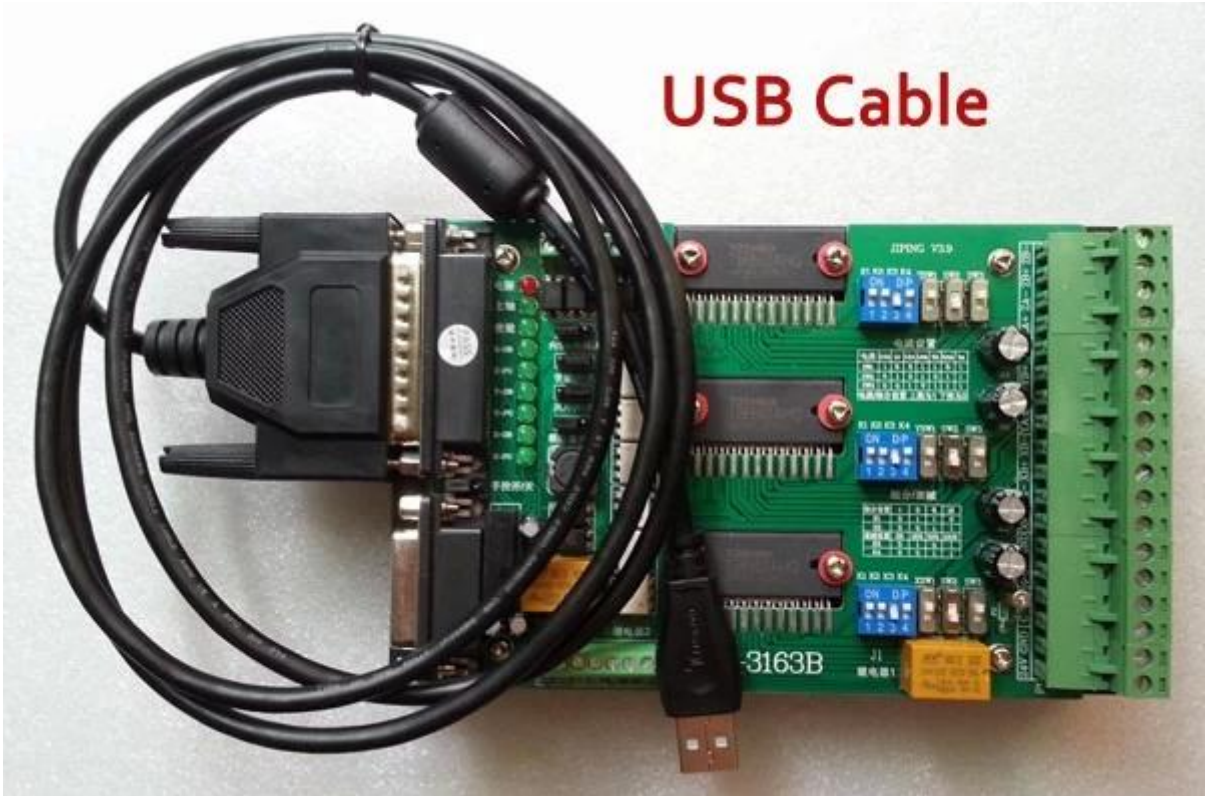
尺寸	890 * 690 * 525mm
分辨率	742mm*480mm
重量	约60.63kg/60.61kg
最大行程	≤95mm
行程	1605mm X / Y / Z
滑动轴	Dia.16mm X轴
	Dia.20mm Y轴
	Dia.13mm Z轴
额定负载	57kg/3A 150N.cm
电机	2200W 24000RPM
丝杠	ER-11A 3mm/7mm ER-16A 3mm/10mm
精度	0.05mm
定位精度	0.03mm
操作系统	MACH3 Windows XP/USBCNC Windows XP/Windows 7
速度	0-4000mm/min
控制方式	脉冲+PWM+TB6560 3axis
接口	USB
控制卡	G MACH3
电压	AC
功率	AC220V / AC110V
其他	
尺寸	60 * 52 * 43mm / 80 * 22 * 63mm
重量	58kg







USB Cable



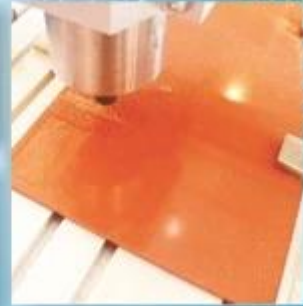
Ball screw high precision





www.chinacnczone.com

Live Demo



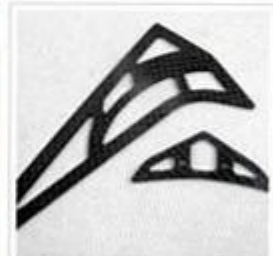
PVC



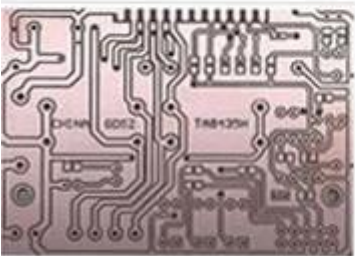
DOUBLE COLOR BOARDS



WOOD



CARBON FIBER REINFORCED PLASTICS PLATE



PCB



WAX



DOUBLE COLOR BOARDS



EPOXY TOOLING BOARD







QA Inspection Area



Mechanical Assembly Area



Machine Commissioning Area



Finish Products Area

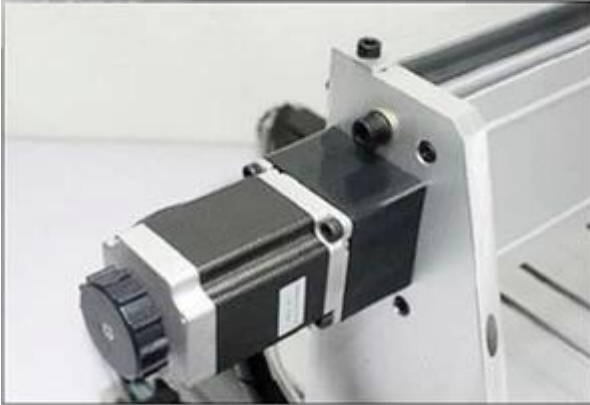


Packaging Area



Always be imitated, never be surmounted.

We all use well-designed professional aluminum to manufacture the machine. Almost all of the structural member are extruded by a dedicated mold. The production of large quantities so that we have a strong price competitiveness. Professional mold and materials so that our quality has been stable protection.



SHENZHEN SCOTLE TECHNOLOGY GROUP LIMITED

ChinaCNCzone, engrave your colorful life!

客户合影及公司文化 Customers and Company Culture

