

# In Stock, Shipping Today!

## A Good Review = A Free Sample + Coupon

If you are satisfied with our product and service, kindly please write your good reviews! We will attach a free Gift/Sample in your next order for your kindness and time. Coupons for old customers up to US\$500 is also ready for you!

To place an order:

- 1."Start Order"
- 2."Choose the power and voltage"
- 3."Filling your address and phone number"
- 4.Follow the system to Pay via"credit card,T/T,or Bank Transfer"

Shipping:

We ship in 1-5 days for qty.<5 sets,when the tracking number is uploaded to your order,normally the parcel will have tracking information within 2 days>



Alibaba will protect your business 100%  
And credit to our company reaches

**US\$67,000**



[www.China-CNCrouter.com](http://www.China-CNCrouter.com)

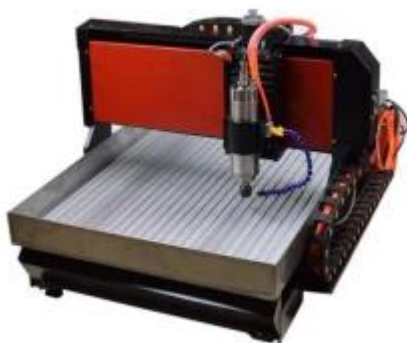
More information

More Videos

Faster service

Chinacnczone 6090 3/4 Axis Mini CNC Stone Engraving Machine For Metal

- \* It can work with 3 axis / 4 axis
- \* Integrated high-speed micro computer intelligent control chip.
- \* First STEEL STRUCTURE CNC3040 in the Market
- \* Mach 3 software, supports Win10
- \* Built in frequency converter and without controller box
- \* Applicable to steel, aluminum, brass, copper, stone, granite etc.



# Specification Sheet

\* Stable stock, CE certified factory, fast delivery for max production. Offer one-stop solution for engraving business.

Effective working travel	600(X)mm*900(Y)mm*100(Z)mm
Shape dimension	870*1100*600mm
Work table dimension	#45 steel
Frame materials	≤120mm
acceptable material thickness	SFUR1605-DFC7-P0 ball screw
Driving units X/Y/Z axis	Dia.30mm chrome plate shafts
Sliding units X axis	Dia.20mm chrome plate shafts
Sliding units Y axis	Dia.16mm chrome plate shafts
Sliding units Z axis	57 two-phase 2.5A 55N.cm
Stepping motor type	Brand new 2200W water cooling spindle, 24000RPM
Spindle motor	ER20 1-13mm,
Principal axis collet	0.05mm
Repeat accuracy	radial beat acuities 0.03 mm
Spindle precision	MACH3 Support windows 10
Software environment	0-4000mm/min
Maximum speed	XHC main board
Control unit	USB port
Computer connection	G code, tap, NC, ncc etc.
Command code	Emergency stop button
Protection	AC220V/110V
Operating Voltage	1 Year for the whole machine, 3 months for the spindle
Warranty	One wooden box, 134*98*86cm
Package size	150KG
The 4th axis Size	220(L)*116□W□*105□H□
The 4th axis Center-height	65mm
The 4th axis Clamping diameter	80mm
The 4th axis Reduction ratio	1:3

Tips: 4th Axis for optional□4axis can engrave cylindrical objects

## Our Advantages



Overseas warehouse in the United States



Overseas warehouses in Russia

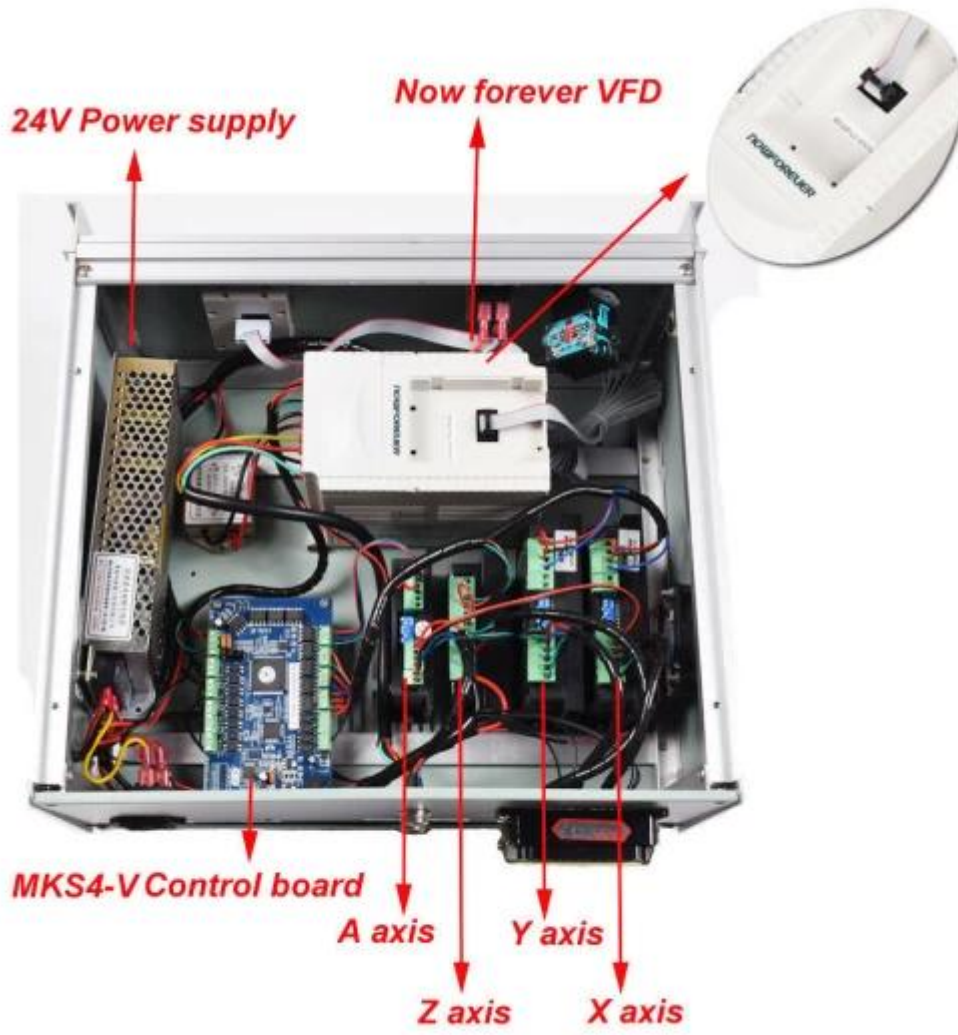


Overseas warehouse in Germany



Overseas warehouse in Poland







## Product packaging



**weight: 103kg**



# Water pump



- > Rated voltage :24V
- > Rated power :34W
- > Maximum pressure : 0.65MPa
- > The largest flow : 2.9L/min





## Recommend Products



[5 axis 6040 mini cnc router:4060 Cutting Center Pcb Routers Wood Carving 5 Axis Mill Engraving Lathe Router Mini Cnc Milling Machine](#)



[3/4 axis 6090 mini cnc wood router:3D Carving Wood Bead Etching Frame Working Drilling Milling Cut Making Turning Cnc Wood Cutter Machine](#)



[5 axis 3040 steel structure metal engraving machine:Spindle Motor Tools Price Small Kit Spare Parts Bits Stone Metal Cutting 5 Axis Cnc Router Machine](#)

## Company Profile

ChinaCNCzone

Engrave your colorful life !

[www.chinacnczone.com](http://www.chinacnczone.com)



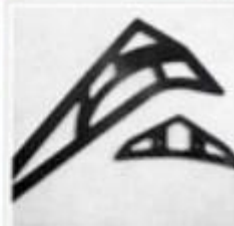
PVC



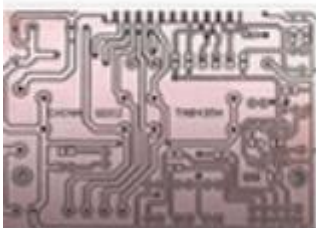
DOUBLE COLOR BOARDS



WOOD



CARBON FIBER REINFORCED  
PLASTICS PLATE



PCB



WAX



DOUBLE COLOR BOARDS



EPOXY TOOLING BOARD

# Our Certifications

**EST Standard Testing & Certification**

**Certificate of Conformity**

EST Standard Testing & Certification Ltd  
 1000 Westborough Road, Suite 100, Westborough, MA 01581  
 Tel: 413.339.1234  
 Fax: 413.339.1235  
 Email: info@estcert.com  
 Website: www.estcert.com

**CE**




**商標註冊證**

**SMC**

**許鴻基**





**ISO 9001**

**ISO 14001**

**SGS**

**SGS**





**CERTIFICATE OF INCORPORATION**  
OF A  
**PRIVATE LIMITED COMPANY**

**Company Number: 1027100**

The Registrar of Companies for England and Wales, hereby certifies that the following particulars are correct in accordance with the provisions of the Companies Act 2006.

**Company Name: SMC (UK) LTD**

**Registered Office: 1000 Westborough Road, Suite 100, Westborough, MA 01581**

**Company Status: Limited by Shares**

**Company Type: Private Limited Company**





**VAT Certificate**

**Company Name: SMC (UK) LTD**

**VAT Number: GB123456789**

**Registration Date: 01/01/2010**

**Registration Status: Active**

**Registration Office: HM Revenue & Customs, London**

**Registration Reference: 123456789**



**CREDIT CHECKED**  
by ALIBABA FINANCIAL

This supplier has been Credit Checked by Alibaba Financial.

Alibaba Financial is a leading financial institution in China, providing a wide range of financial services to its customers. The company has a strong track record of providing reliable and accurate credit information to its clients.

Alibaba Financial is a member of the China Banking Association and is regulated by the China Banking Regulatory Commission. The company is also a member of the International Chamber of Commerce (ICC) and is a signatory to the ICC Uniform Customs and Practice for Documentary Credits (UCP 600).







CARBON FIBER REINFORCED PLASTICS PLATE



EPOXY TOOLING BOARD



Dear customers,  
Thank you for your supports and your coming!







## FAQ

[After service Q and A](#)

[Question 1](#)

[I want to buy this machine but i don't know how to program G code ?](#)

[Answer: We can provide fee charge service Or you can go to study .](#)

[Question 2](#)

[I don't know how to setting parameters when need to use it .](#)

[Answer: We have instructions for our machine .All the parameters is very clearly on it. We also can provide online support service.](#)



### Question 3

I am interested in this CNC machine but i don't know how to use it.

Answer: We have video to show how to operate our machine ,If you still don't know after check the video and we can provide remote assistance .

### Question 4

How can i do if the machine damage on the shipping way ?

Answer: No matter any problem with the machine please contact us by Alibaba message with photos or videos . We will give you a satisfied solution after check it.

### Question 5

How long is the warranty of the machine?

Answer : This item comes with 12 months Manufacturer's Warranty from the date of customers purchased it.

### Question 6

How can i do when the machine have quality problem ?

Answer : Please take a video to show your problem to us .We have professional engineer to help you solve the problem.A free replacement can send when needed

PS: Any other question welcome to contact us by Alibaba message .We are always here with you! Our working time is 9:00AM-6:00PM from Monday-Friday .All the service can be provide during working time.



**Inquiry**



**for more discount !**