

This [HY-3040](#) Gantry [CNC 3 Axis](#) Router is our latest version of [mini CNC router](#).

Easy operating because:

- It can be updated into mini 4 axis and 5 axis CNC router.
- Integrated high-speed micro computer intelligent control chip.
- With external digital LCD monitor and handwheel controller.
-
- The working process can be tracked, recorded in the digital LCD monitor automatically.
- Mach 3 software
- Built in frequency converter and without controller box.

Higher precision because:

- Cross slippery platform design rather than gantry design.
- Aluminum base sheet is heavy which can make sure no vibration when work.
- With auto-checking function.
- 1500w/2200W frequency water-cooled spindle for your selection.
- Ball screw.

You can buy this HY-3040 4 Axis CNC Router from us without any worry

- CE approved.
- Video support.
- English manual available.
- Mach 3 software send with the machine as a CD.
- **Can engrave material which hardness below 45.**
- From reliable & trustable profesional [China CNC Router](#) manufacturer.
- **Original Mach 3 software can be provided.**
- **New USB interface can be added (compatible with Mach 3 software)**

| HY-3040 4 Axis CNC Router parameters | |
|--------------------------------------|---------------------------|
| product dimension | 715(H)*700(L)*610(W) mm |
| effective work area | 300*400*150mm |
| precision ballscrew | 1605 |
| XYZ rail material | hard chrome shaft |
| XY rail diameter | 20mm |
| Z rail diameter | 16mm |
| XYZ axis torque | 57*78 250 OZ/IN (2.2N/CM) |

| | |
|--------------------------------|--|
| 4th and 5th | 57*56 |
| 4th and 5th transmission ratio | 1:6 |
| repeat positioning accuracy | 0.01mm |
| working precision | 0.02mm |
| processing speed | 0-4000 mm/min |
| A-axis B-axis rotation speed | 0-180 rpm/min |
| XY table maximum load | 50kg |
| XY+A+B axis table maximum load | 15kg |
| tailgate material | stainless steel |
| switching power supply | integrated 24V 350W |
| spindle power | 1500W/ 2200W water-cooled frequency spindle |
| input power | 220V/ 110V power supply |
| output current | drive 4.5A (peak 5A) |
| collet size | 3/3.175/6mm if need others change into ER11 first |
| high efficiency water pump | 55W, 46.6L /Min |
| drive motor | 57*78 stepper motors (two-phase 4 wire) |
| engraving material | Metal, Brass, Acrylic, Wood, Aluminum, Stainless Steel (hardness less than 45 degree) |
| support computer system | windowXP/ window 7 |
| how to connect with computer | 25 pin parallel port |
| software | MACH3 3.04 |
| net weight | 50kg |
| packing | wooden box |
| outside packing | 78*66*82 (cm) |
| weight | 96kg |









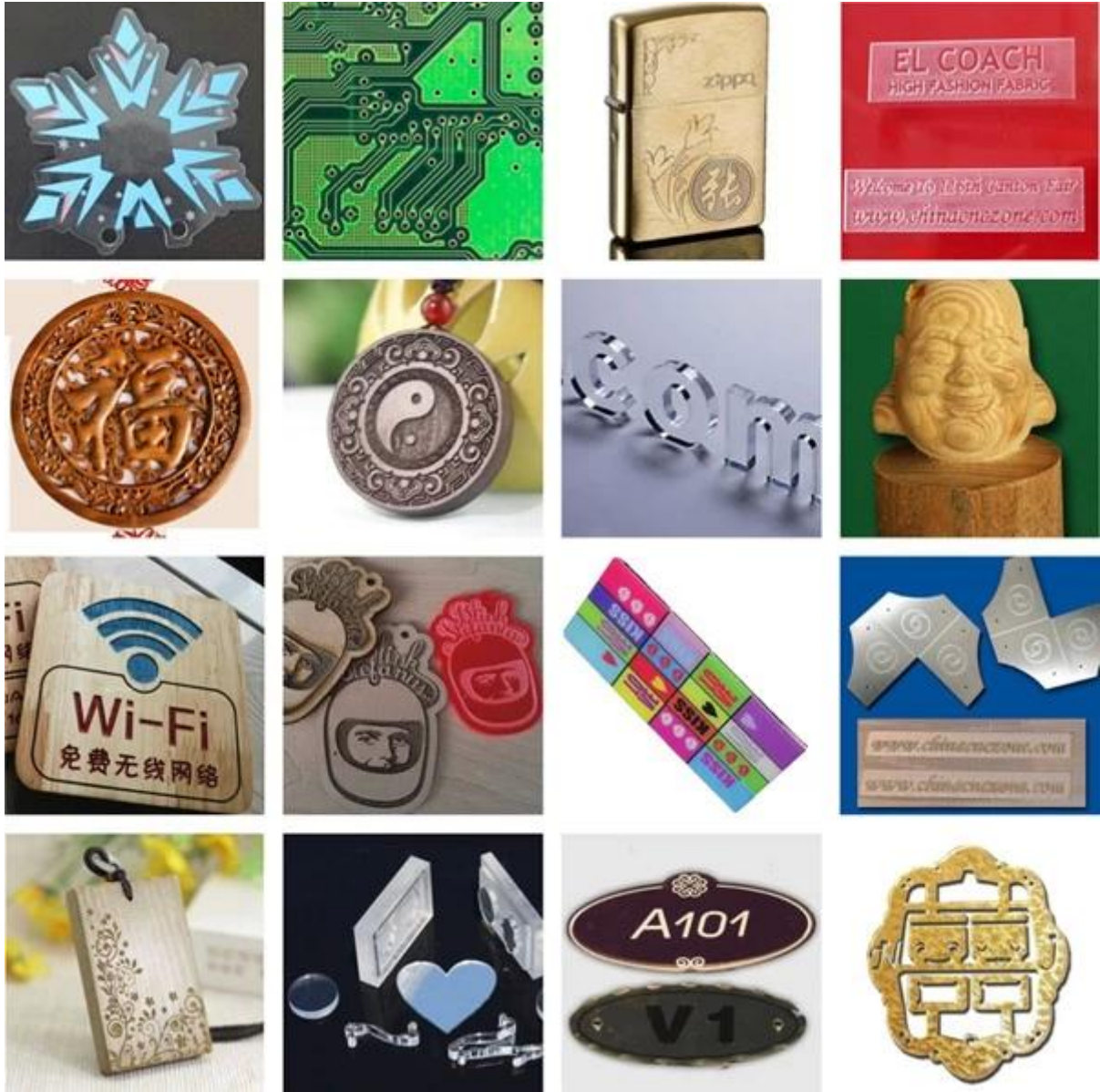
x



04 Applications

ChinaCNCzone

This Desktop **Mini 5 Axis CNC** Machine HY 3040 can be widely used to engrave wood, acrylic, brass, aluminum, PVC, PCB and so on.



05 Factory Tour

ChinaCNCzone

ChinaCNCzone team always welcome customers from all over the world to visit our factory, and let us provide the best different models [mini CNC routers](#) for users together.



QA Inspection Area



Mechanical Assembly Area



Machine Commissioning Area



Finish Products Area



Packaging Area



CERTIFIED SUPPLIER OF SUPERIOR QUALITY PRODUCTS



07

Company culture



SHENZHEN SCOTLE TECHNOLOGY GROUP LIMITED

ChinaCNCzone, engrave your colorful life!

客户合影及公司文化

Customers and Company Culture



