

**China CNC6040 3 Axis [Mini CNC](#) Machine for Sale with DSP Controller (1500W or 2200W Spindle)**

Effective working travel **580(X)mm\*400(Y)mm\*105(Z)mm**

Shape dimension **880\*670\*640mm**

Max.workpiece dimension **750mm\*450mm<150mm**

Work table dimension **750mm\*480mm**

acceptable material thickness **≤150mm**

**Outstanding features as below**

1. 1500w / 2200w Water Cooled Spindle for selection
2. With DSP controller box, no need to connect with any computer or notebook.
3. Work independently.
4. SD card slot interface
5. With SD card slot interface.
6. 2KG water-cooled spindle, powerful!
7. Fast working speed.
8. Live video support on Youtube.
9. Can be updated into [CNC 6040 4 Axis](#).
10. Technical support always available with live video support.
11. Ball screw high precision.
12. Independent power supply for mainboard, prolong using life.
13. **Software: compatible with Mach3 or USB CNC software.**
14. Limited switch added.
15. Auto-Checking function, easy to set origin of Z axis.
16. No need to connected with notebook or computer
17. Can engrave material such acrylic, brass, wood, aluminum, PCB and so on.
18. Spindle diameter: 80mm
19. **Can ship from our overseas warehouse.**

P.S: **Original Mach3 soft available**

**What are the advantages for the DSP Control System ?**

1. **Independent DSP system, work without a computer.**
2. Insert TF memory card, automatic reading and processing files.
3. By operating the control box, you can program and carving directly.
4. G-code files can be directly edited, delete, insert, and so on

**Note: You may also interested in below, Just click below link::**

**[A.The Outstanding Features for ChinaCNCzone MACH 3 USB CNC 6040 3 Axis 1500W 2200W](#)**

**[B.The comparisons of CNC 6040 made by ChinaCNCzone and Other suppliers.](#)**

**[C. What are the differences between ChinaCNCzone NEW CNC 6040 and Old Version](#)**



## 02 Parameters China zone

□□

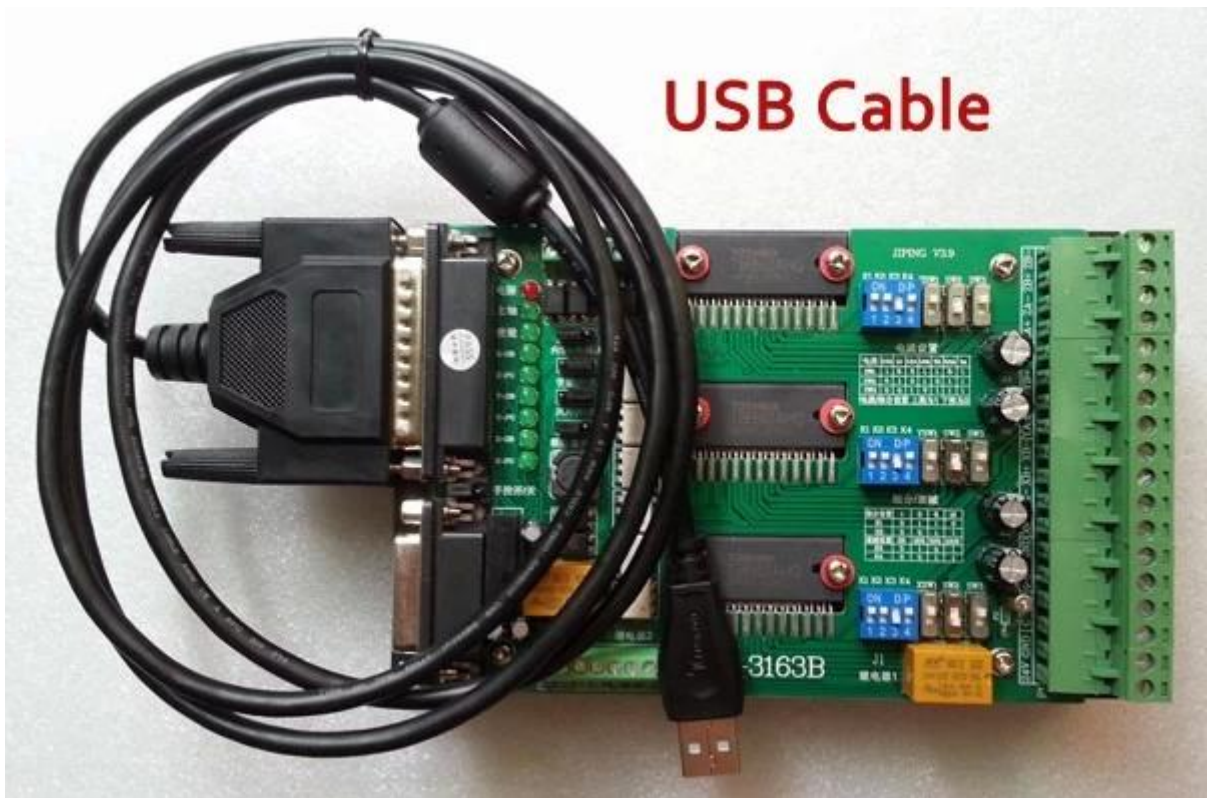
CNC 6040 3 Axis Parameters		
Effective working travel		580(X)mm*400(Y)mm*105(Z)mm
Shape dimension		880*670*640mm
Max.workpiece dimension		750mm*450mm<150mm
Work table dimension		750mm*480mm
Frame materials		aluminum alloy 6063 and 6061 the unique and dedicated mold extrusion profiles. let counterfeiter dwarfs
acceptable material thickness		≤150mm
Driving units	X axis	1605 ballscrew
	Y axis	1605 ballscrew
	Z axis	1605 ballscrew
Sliding units	X axis	Dia.16mm chrome plate shafts
	Y axis	Dia.20mm chrome plate shafts
	Z axis	Dia.13mm chrome plate shafts
Stepping motor type		57 two-phase 3A 150N.cm
Spindle motor		brand new 1.5KW water cooling spindle, 24000RPM
Principal axis collet		ER11/3.175 mm/6mm
Repeat accuracy		0.05mm

Spindle precision	radial beat acuities 0.03 mm
Carving Instructions	G code/TAB files/nc file/NCC files/DXF file/GERBER file
Communication interface	through parallel and USB connection with computer
Software environment	Windows xp/Win7/Win8/Win10
Maximum speed	0-4000mm/min
Carving speed	0-2500mm/min (different materials differ)
Control unit	Toroidal transformer + PWM power supply module + TB6560 3axis drive board
Computer connection	parallel port/USB port
Command code	G code
Acceptable software	Mach3,USBCNC
Protection	Emergency stop button
Operating Voltage	AC110V/AC220V
Machine weight (Package weight)	3 axis 57kg 4 axis 60KG
package dimension	top□62*49*52cm Bot:80*22*63cm





**USB Cable**





This CNC Router 6040 DIY 4 Axis CNC Milling Machine can be widely used as below:

- A. Widely used not only for Aluminum but also acrylic, brass, wood, PVC, PCB and so on.
- B. Ideal for milling, engraving, drilling & routing.
- C. For Industry, Technology Research, Advertising Design, Arts Creation, Teaching, Student Project and Hobby Purposes, Building Model Making, Advertising Signs, Artwork, Crafts, Aircraft Models, RC Model parts





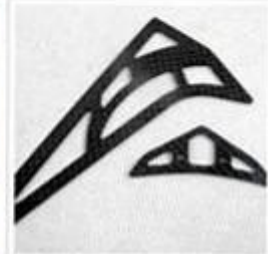
PVC



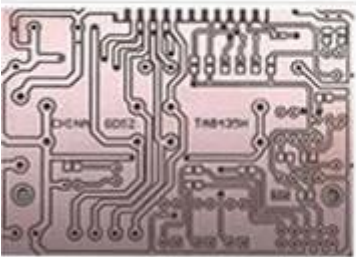
DOUBLE COLOR BOARDS



WOOD



CARBON FIBER REINFORCED PLASTICS PLATE



PCB



WAX



DOUBLE COLOR BOARDS



EPOXY TOOLING BOARD









**QA Inspection Area**



**Mechanical Assembly Area**



**Machine Commissioning Area**



**Finish Products Area**

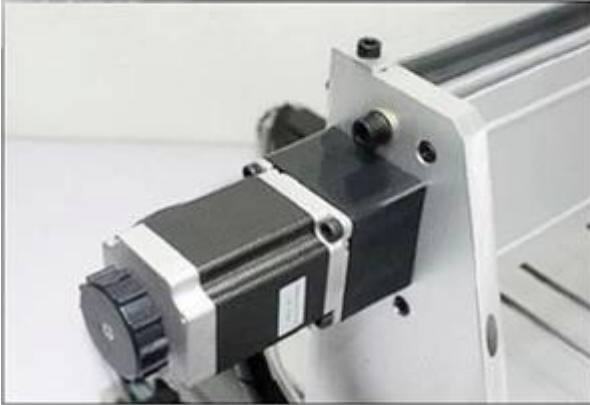


**Packaging Area**



Always be imitated, never be surmounted.

We all use well-designed professional aluminum to manufacture the machine. Almost all of the structural member are extruded by a dedicated mold. The production of large quantities so that we have a strong price competitiveness. Professional mold and materials so that our quality has been stable protection.





# SHENZHEN SCOTLE TECHNOLOGY GROUP LIMITED

ChinaCNCzone, engrave your colorful life!

## 客户合影及公司文化 Customers and Company Culture

