

# Integral type 30W Mini Fiber laser marking machine manual (Optional laser source: Raycus 30W QS; Raycus 30W QB; JPT LP-30W; JPT M7-30W )



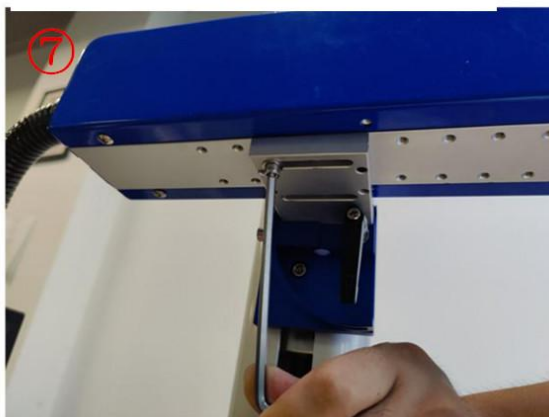
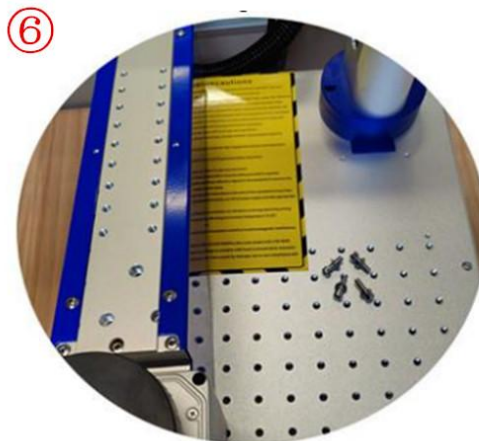
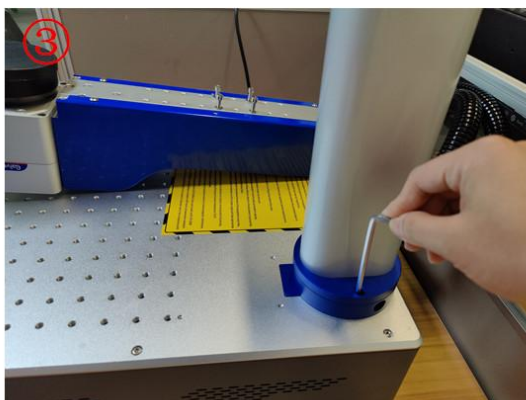
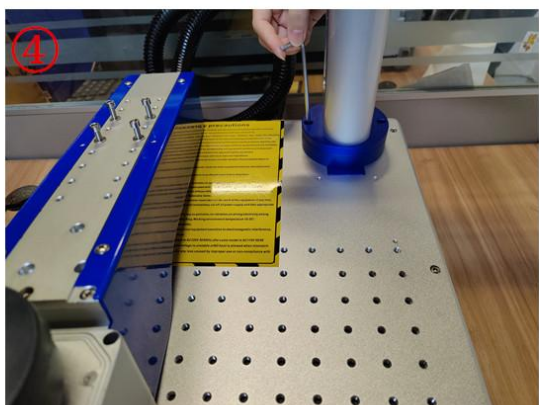
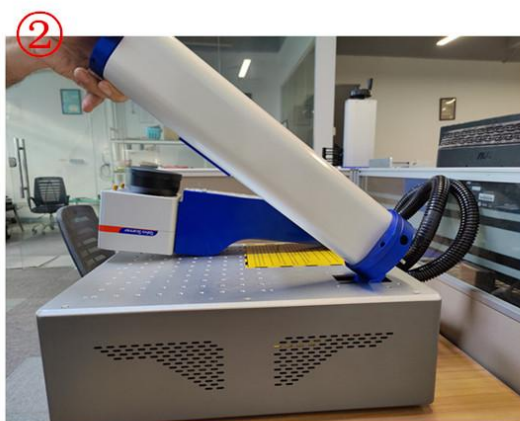
Address: 14, Floor 2, Bldg. Y1, No. 5, Yayuan Road, Nankeng Community,  
Bantian Street, Longgang Dist., Shenzhen, Guangdong, 518129 China

# Directory

1. Assembly .....	3
2. Focus setting .....	5
3. Connect rotary axis .....	6
4. Software installation .....	7
5. Field lens replacement.....	13
6. How to Import Files .....	14
7. How to set up single marking and multiple times marking .....	17
8. How to set up marking range .....	18
9. Marking parameter settings .....	19
10. Doing marking on rotary axis .....	20
A: Marking TEXT .....	20
B: Marking pictures .....	23
11. Q&A.....	26

# 1. Assembly

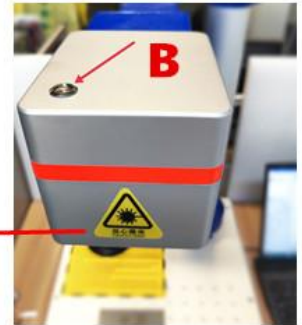
- ① Open box;
- ② Install foothold;
- ③&④ Tighten 2 screws for foothold;
- ⑤&⑥ Remove 4 screws from Optical box;
- ⑦ Connect optical box to foothold ( you can choose different screws holes to make optical box on a suitable position you like );
- ⑧ Connect corresponding cables.



A: USB Port      C: Foot port      E: Spare fuse  
B: Rotary axis port      D: Power Cable      F: Main switch

## 2. Focus setting

Field lens	Focal Length (MM)
110*110	170
175*175	290
200*200	315



### How to focus?

A: Open the lid of field len

B: Press red light button

C: Spin the lifting wheel :  
make two red dots coincide



Note: The FL is an estimate number,  
allowing a little deviation in the actual situation

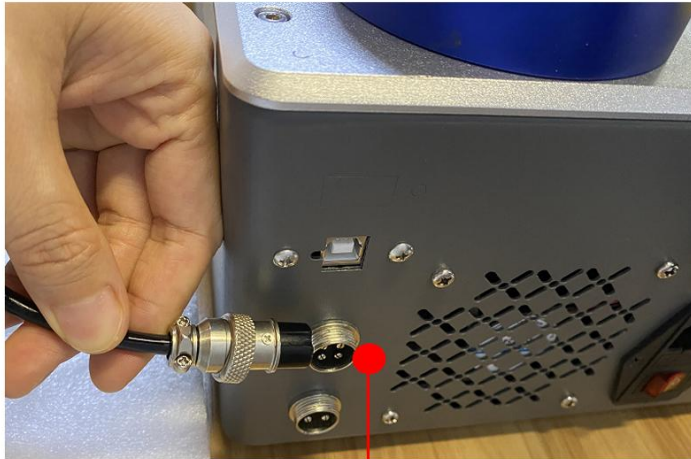
When you doing adjustment of focal length according to our recommended focus for different lens, the point give biggest spark is the best focal length.



### 3. Connect rotary axis

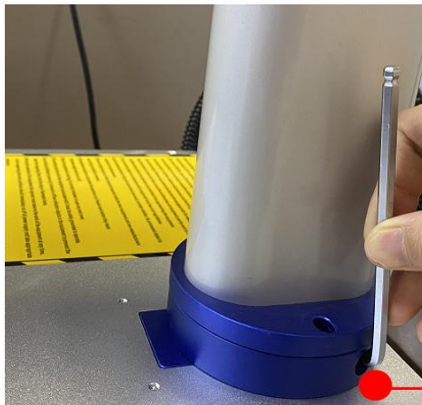
#### Rotary axis Connection

##### Step 1:



Connect the first cable port

##### Step 2:



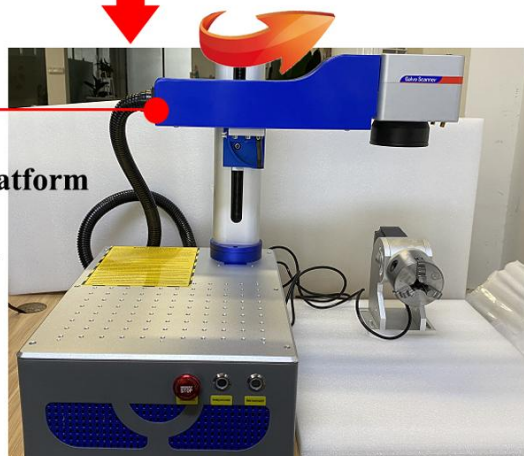
Adjust the bottom screw

Rotate out of machine platform

Finished installed

Focus

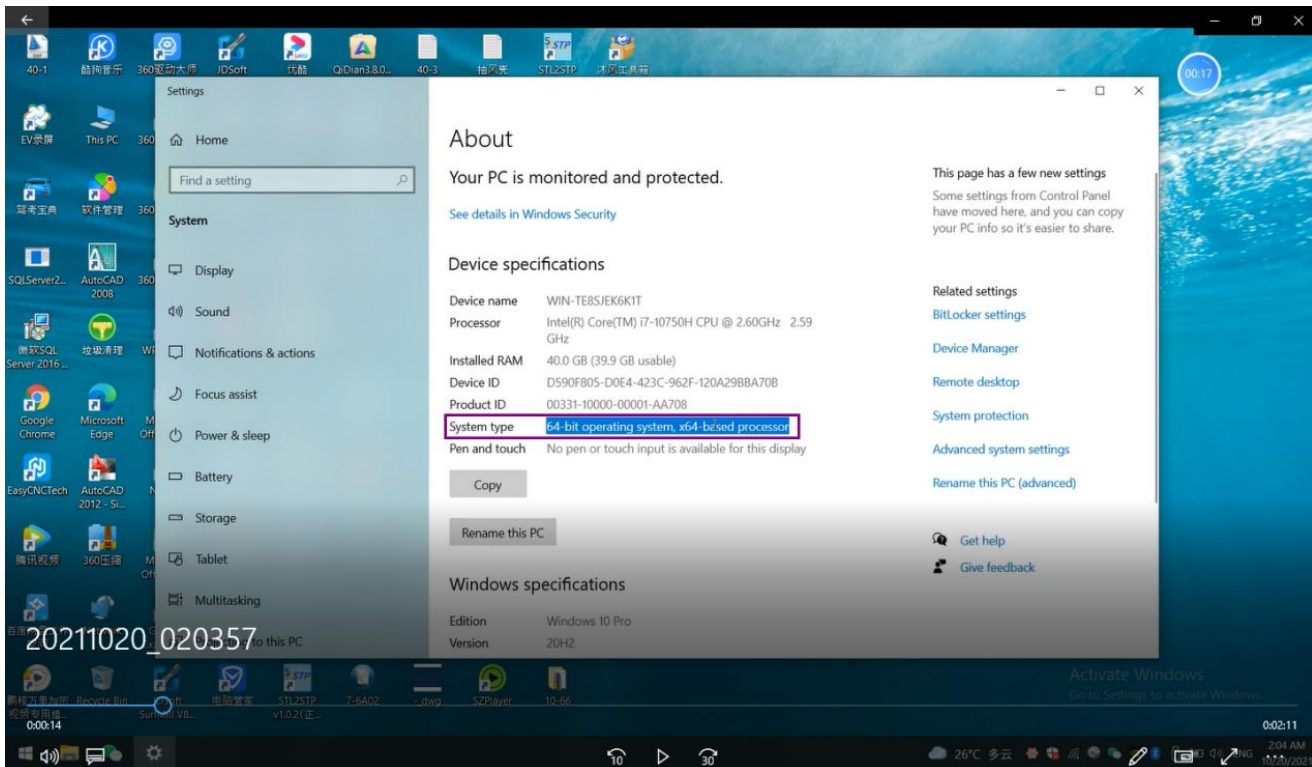
Start working



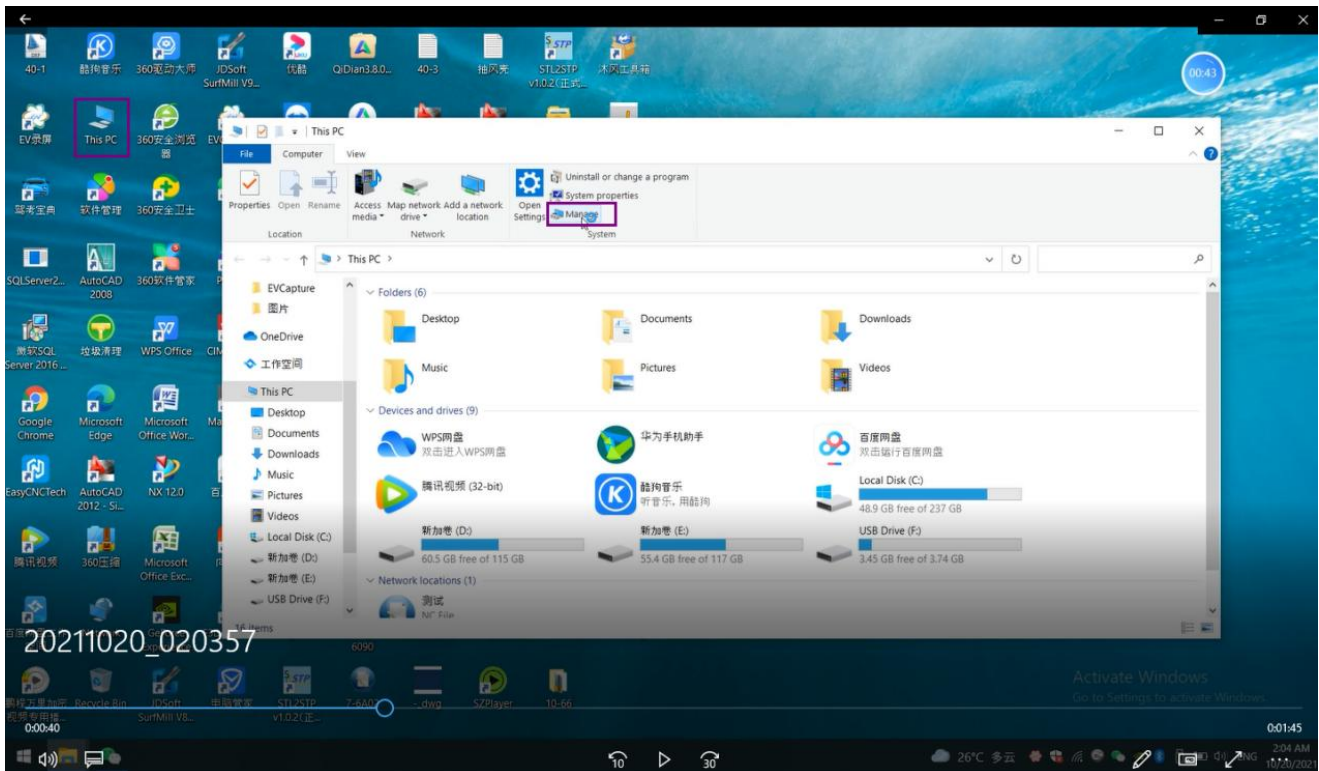
## 4. Software installation

Note: Turn off the anti-virus software(if there are any) and firewall before downloading and then install the software .

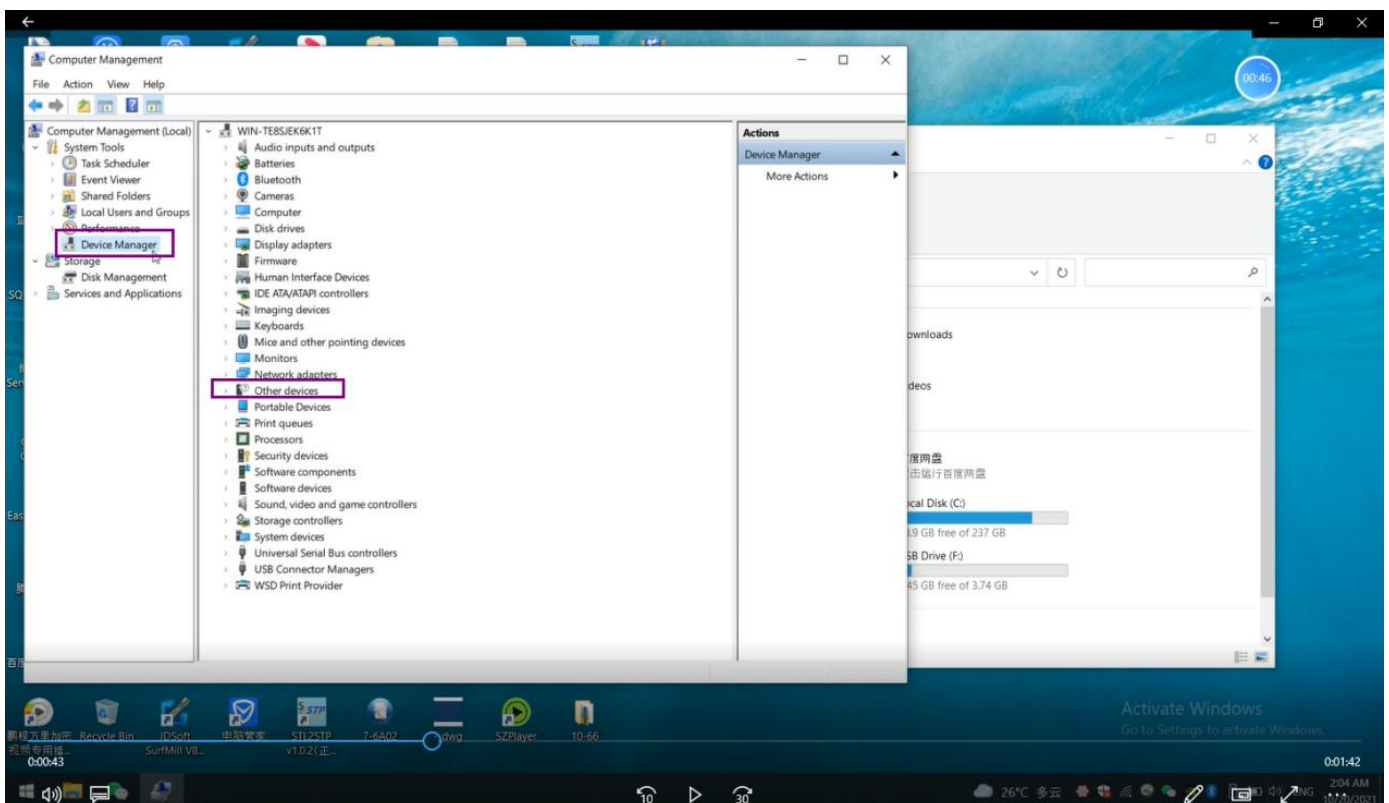
4.1 Remember your computer system, you will need to choose correct system later in updating the driver.



4.2 Click “This PC” and then Open the Manage

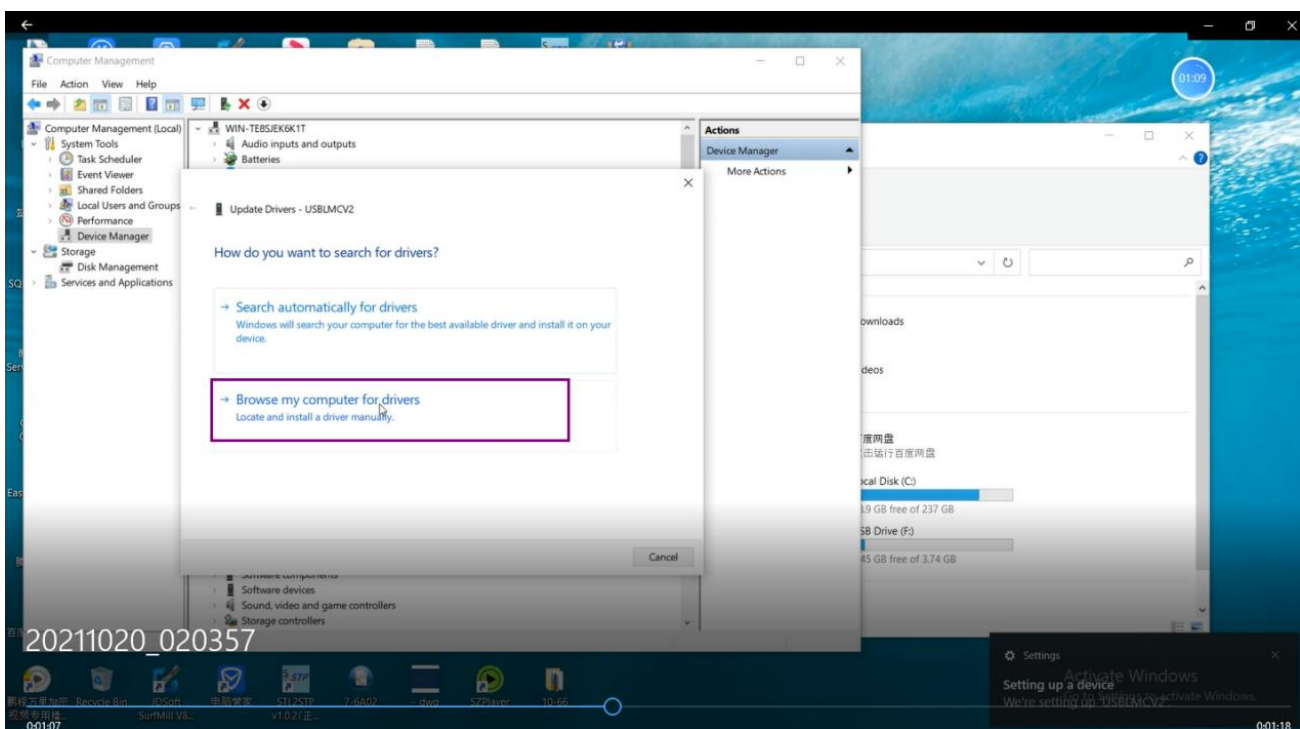
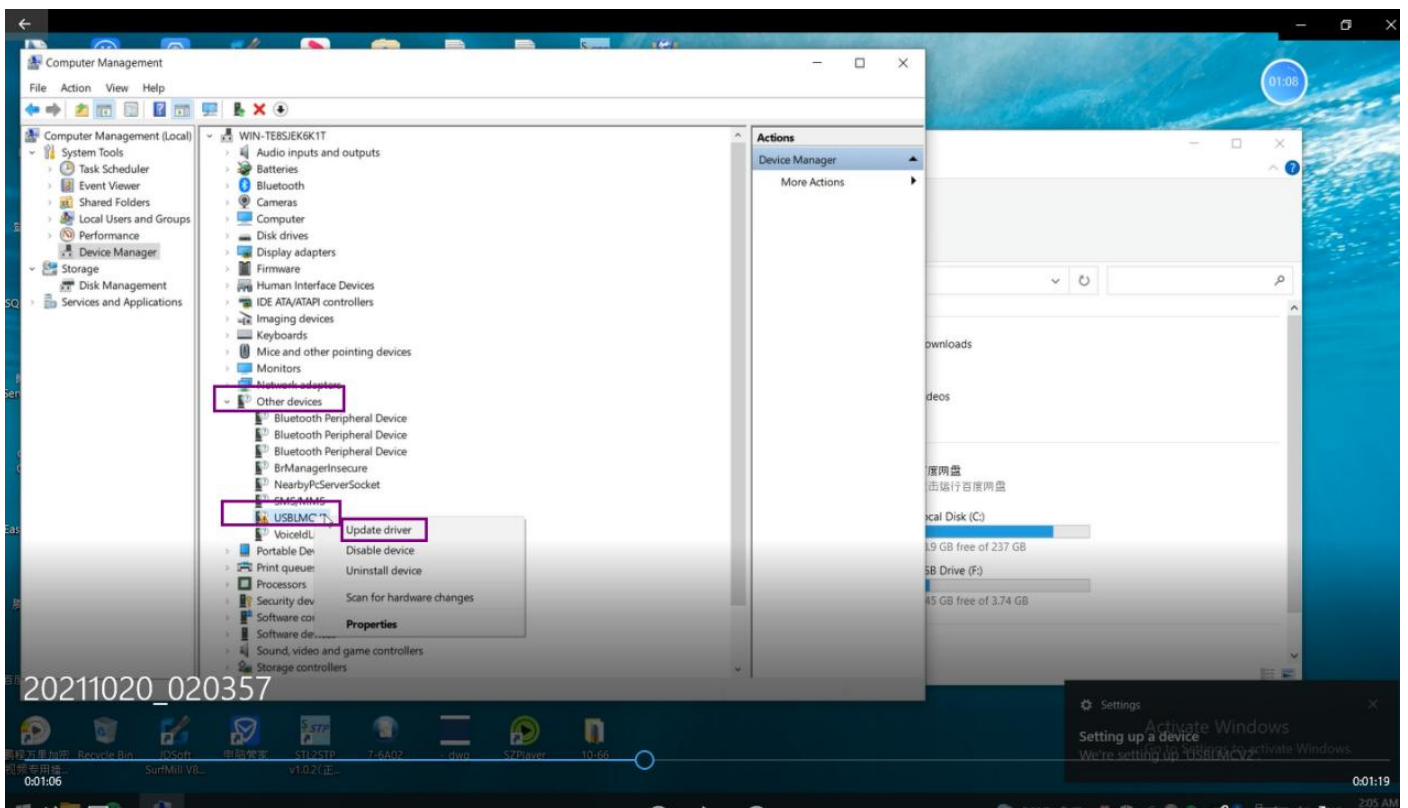


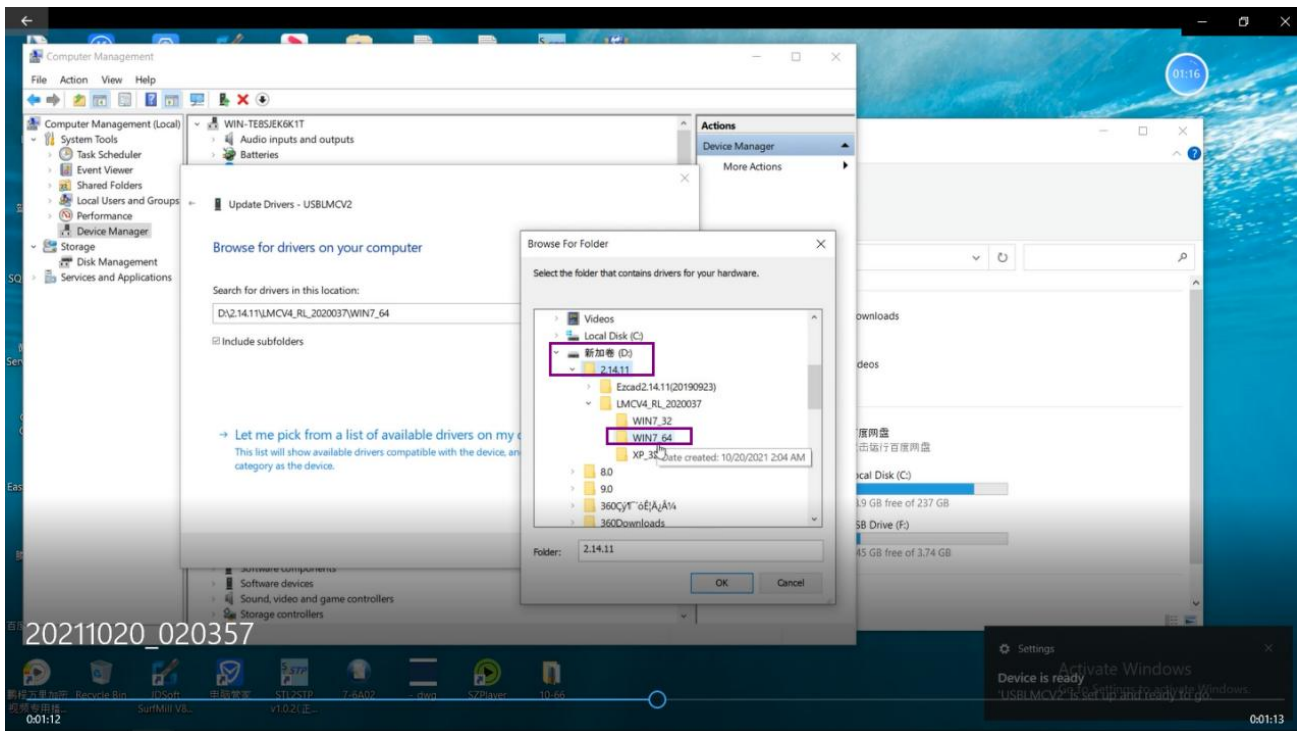
4.3 Click the "Device Manager "and open the "other devices"



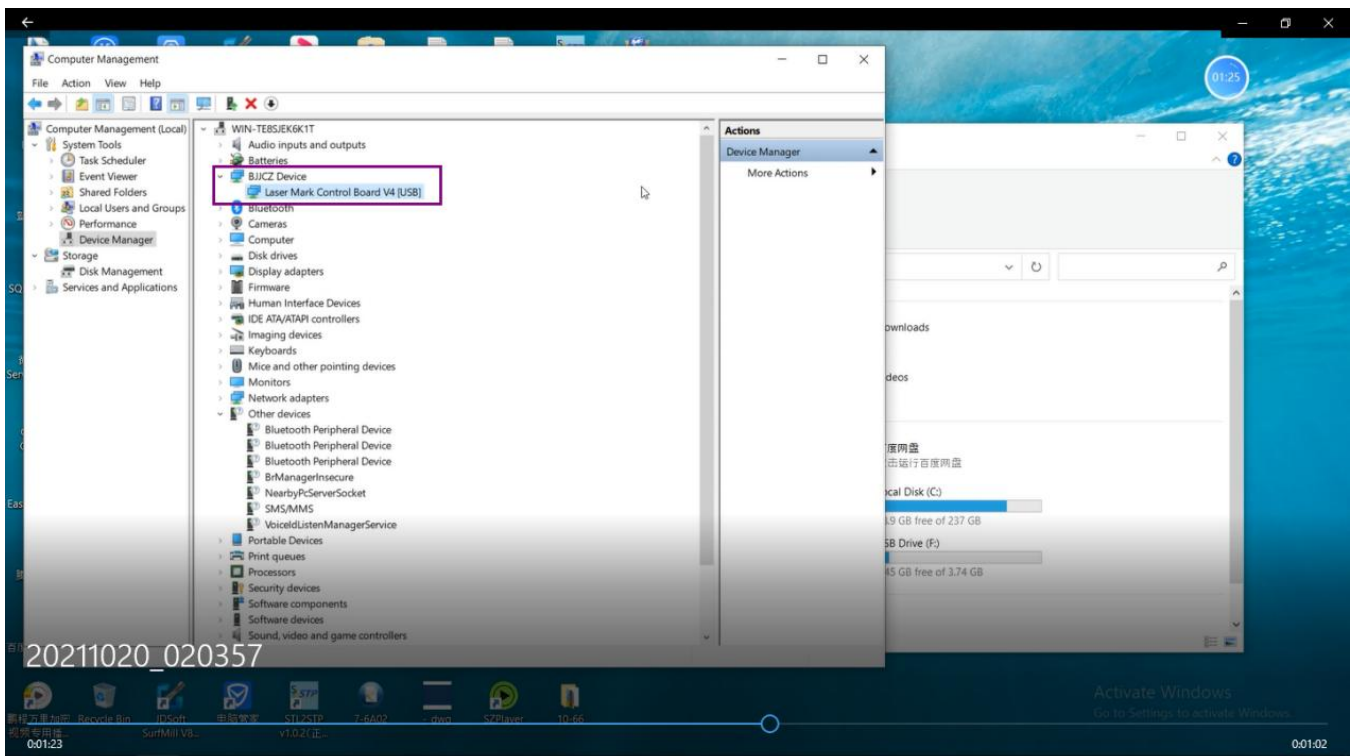
4.4 You will see all the devices connected to your computer .Select "USBLMCV2", right click the mouse and select "update driver"



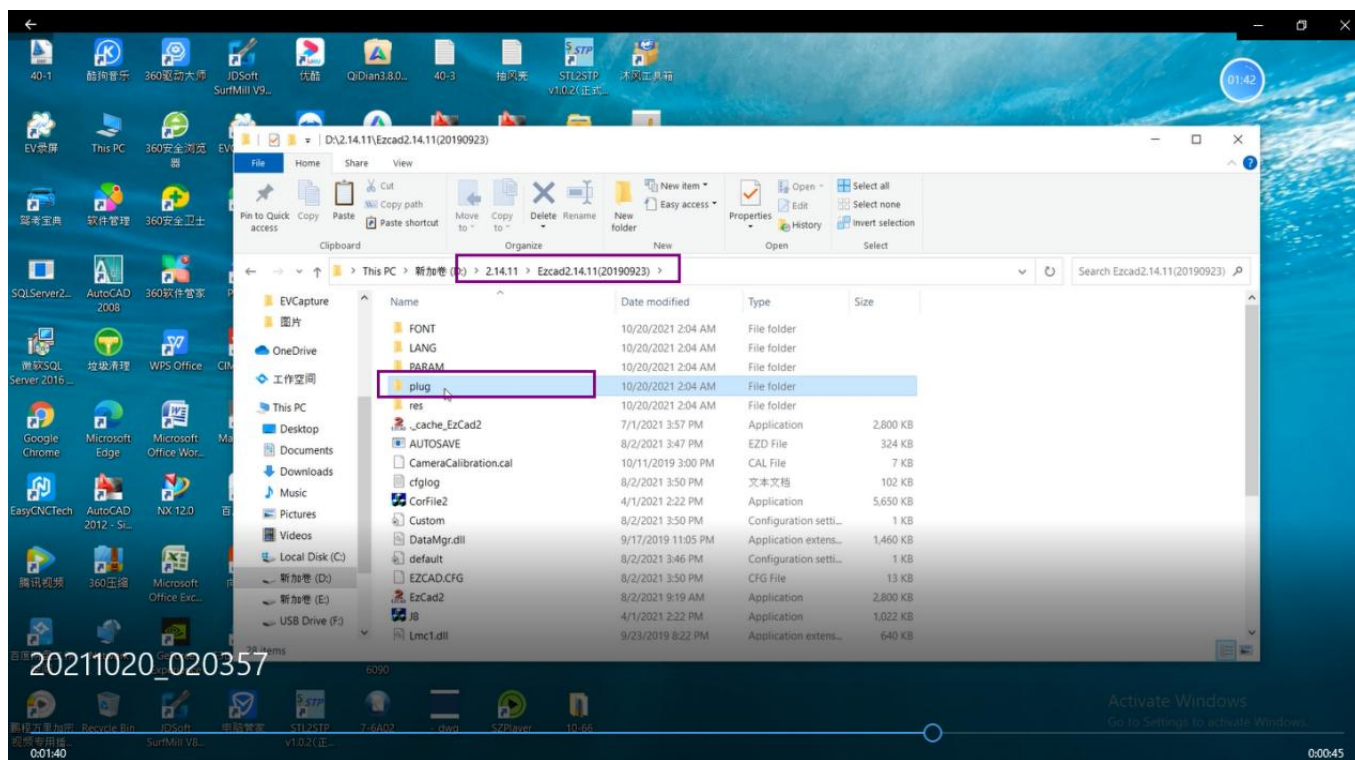
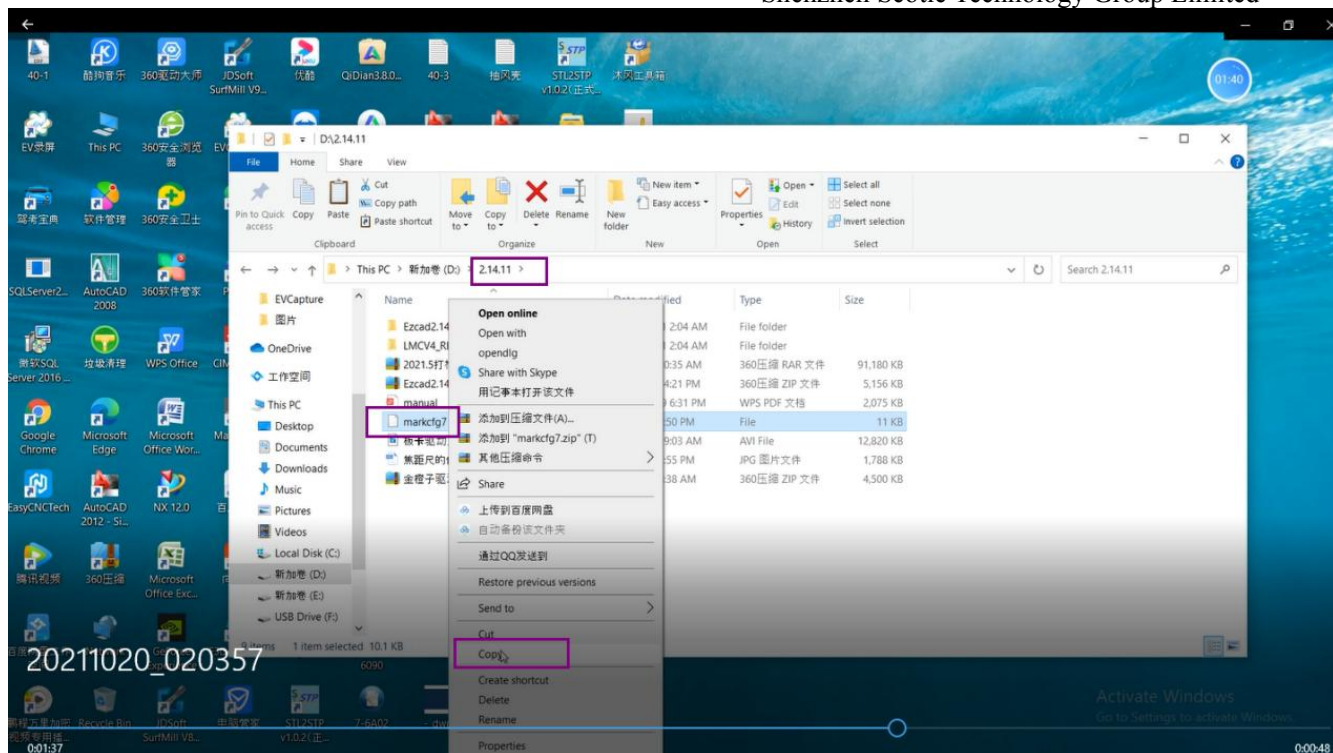




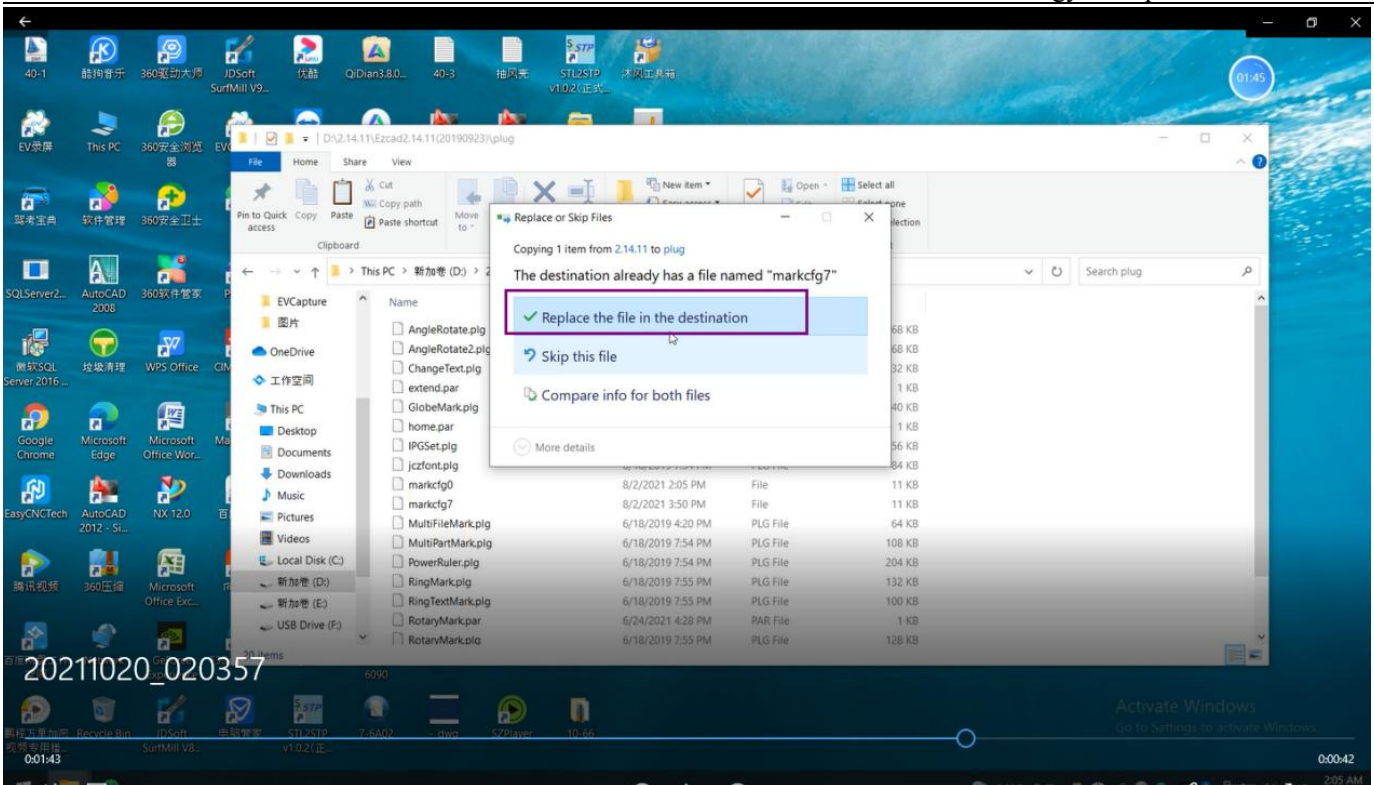
4.5 After updating the driver, you will see “BJJCZ Device” --"Laser Mark Control Board V4(USB)"



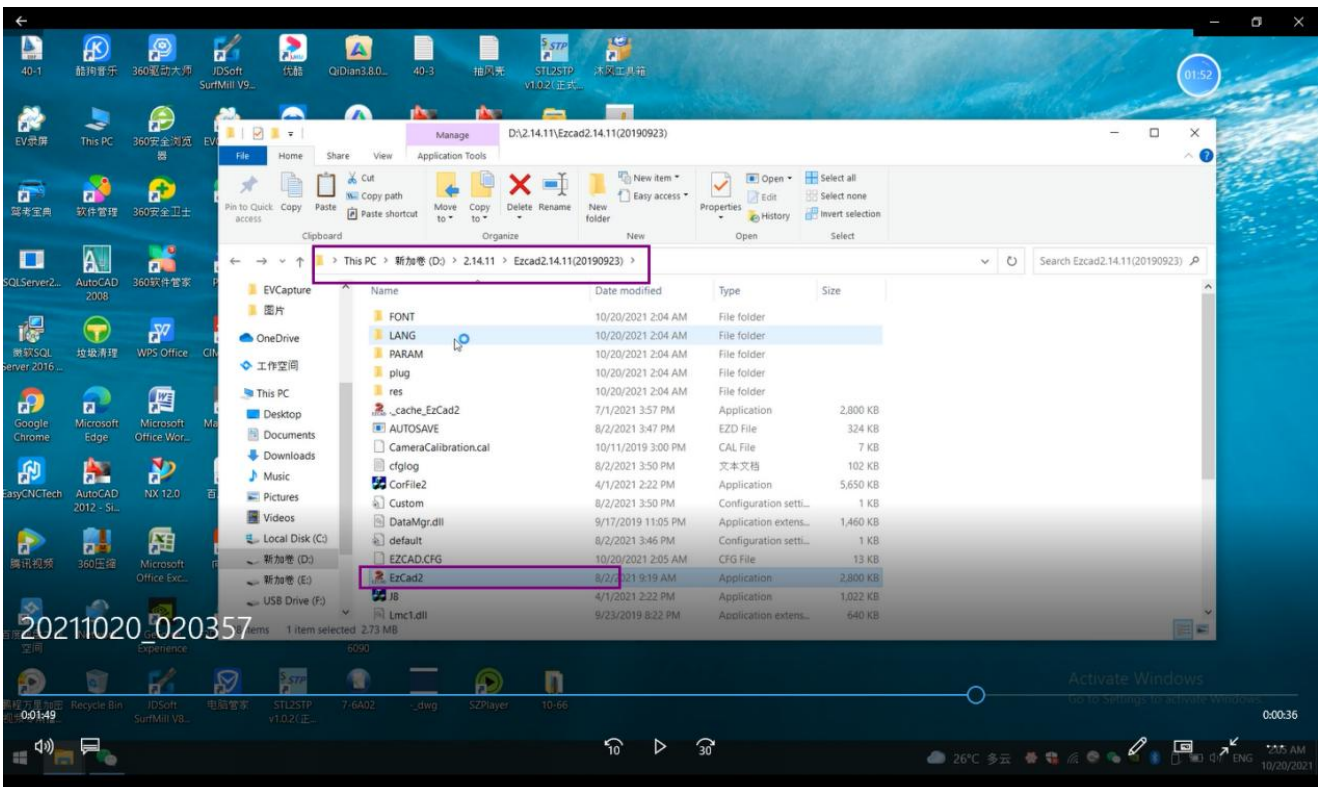
4.6 Copy the configuration file “markcfg7” and paste into the “Ezcard2.14.11 -Plug” folder



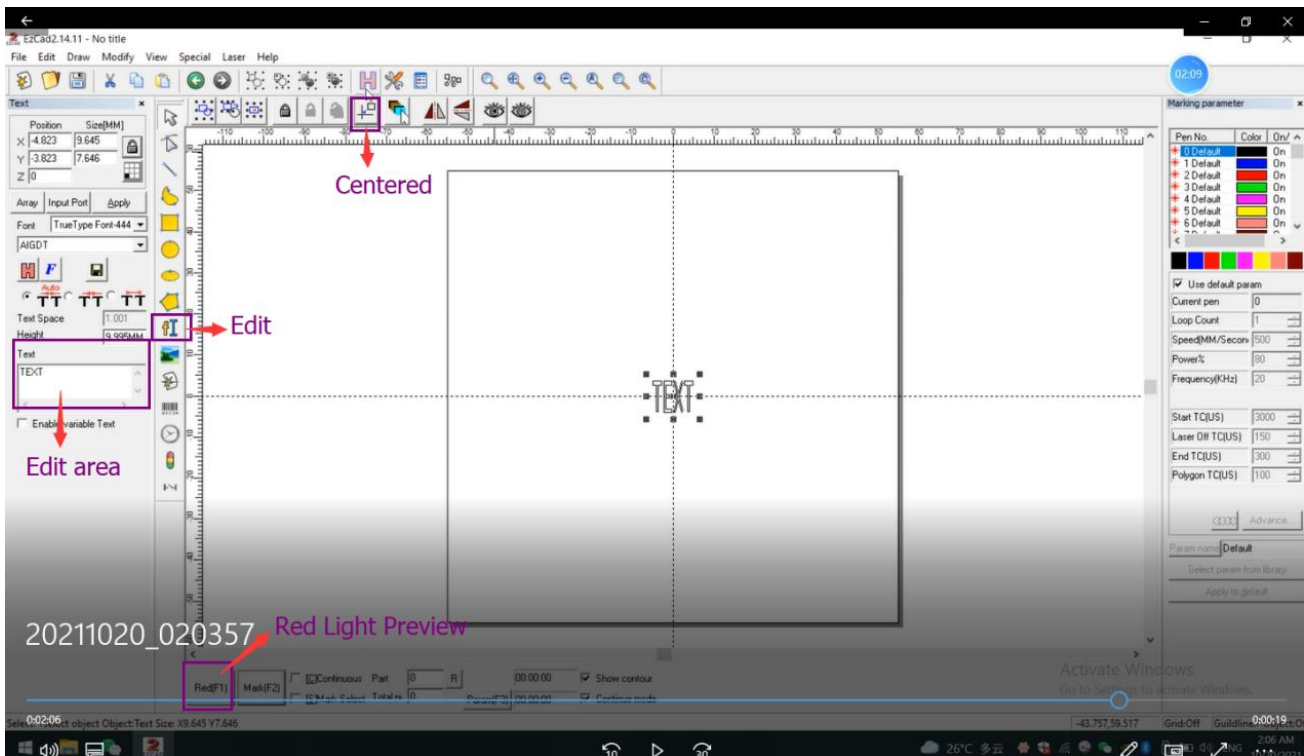




4.7 Select Ezcad2 and send it to the desktop. Now you can see the software on the desktop. Double-click the software icon "EzCad2"







For the introduction of the software page, please read the "Manual"

Get more detail please click the below link:

<https://youtu.be/RxXOsDfdPKc>

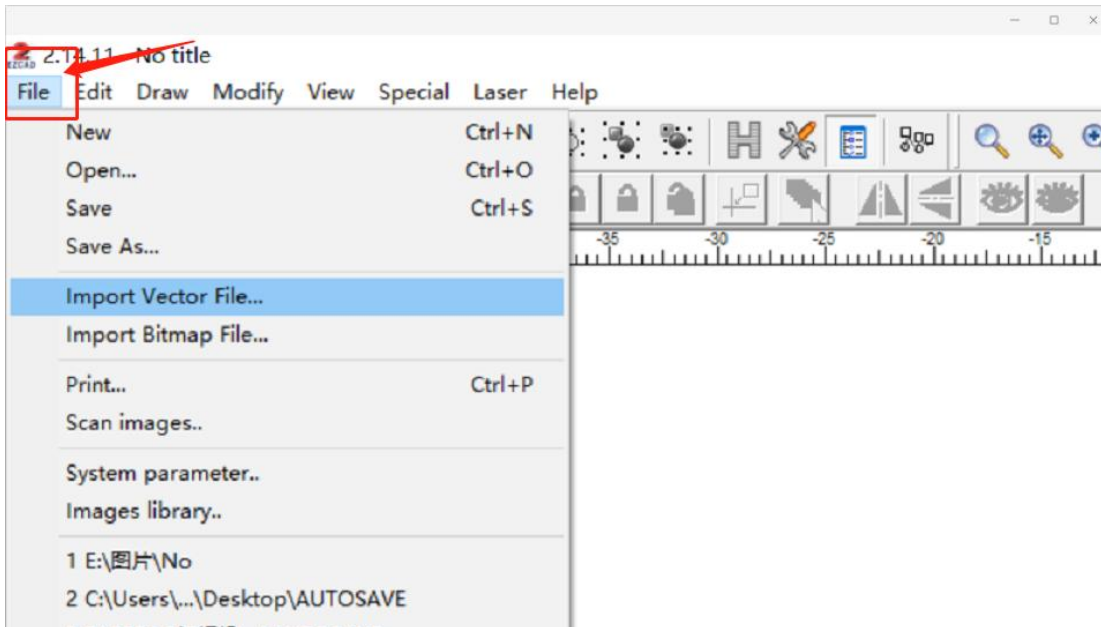
## 5. Field lens replacement

Hold the field lens and then turn the field lens as following picture is to release.

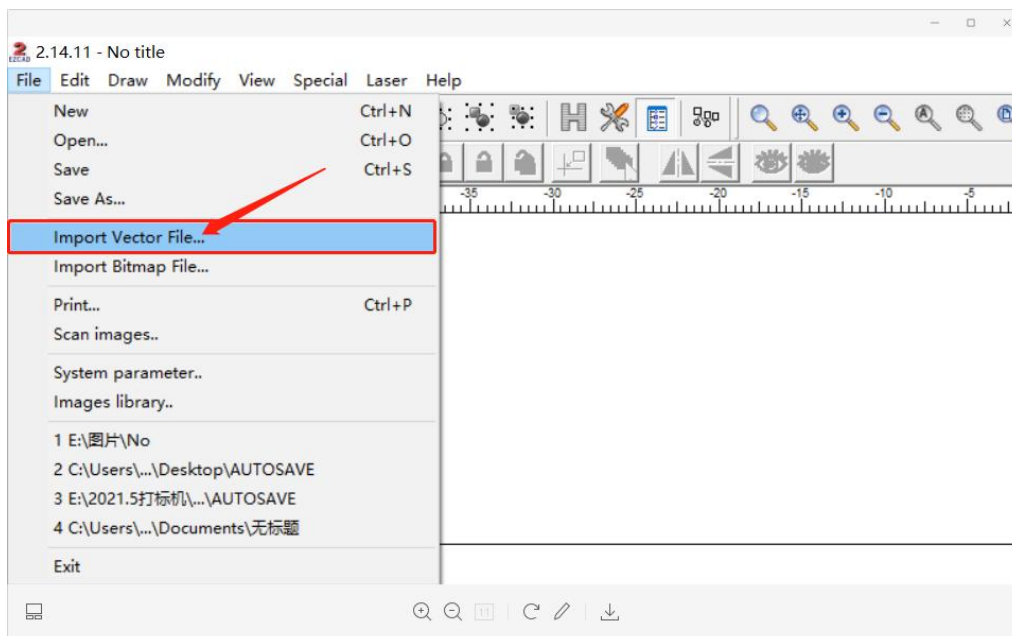


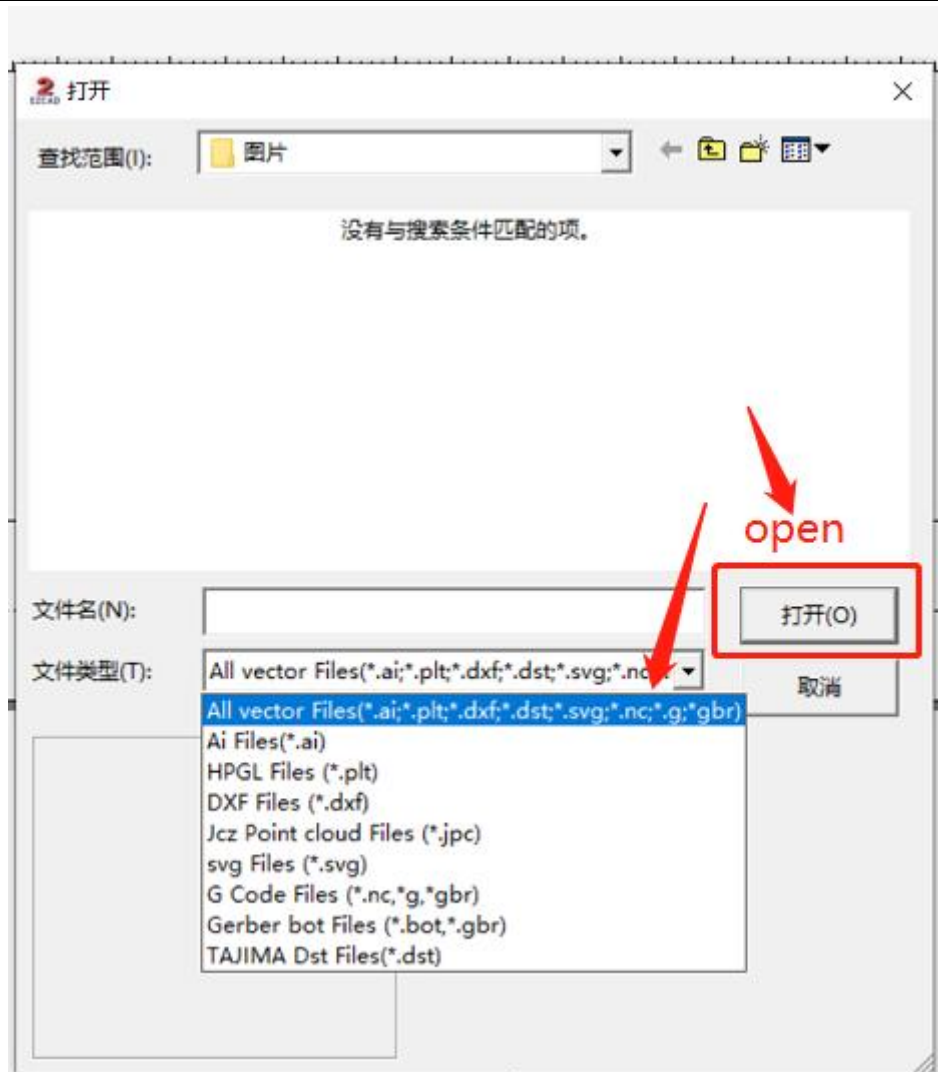
## 6. How to Import Files

Step 1: Click Files in the upper left corner

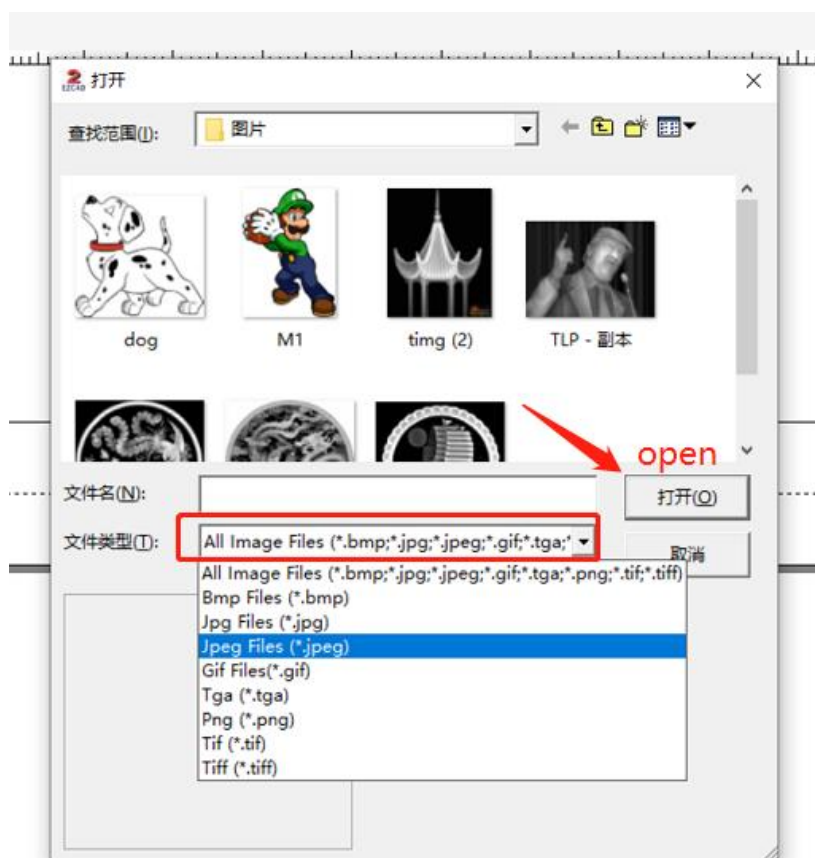
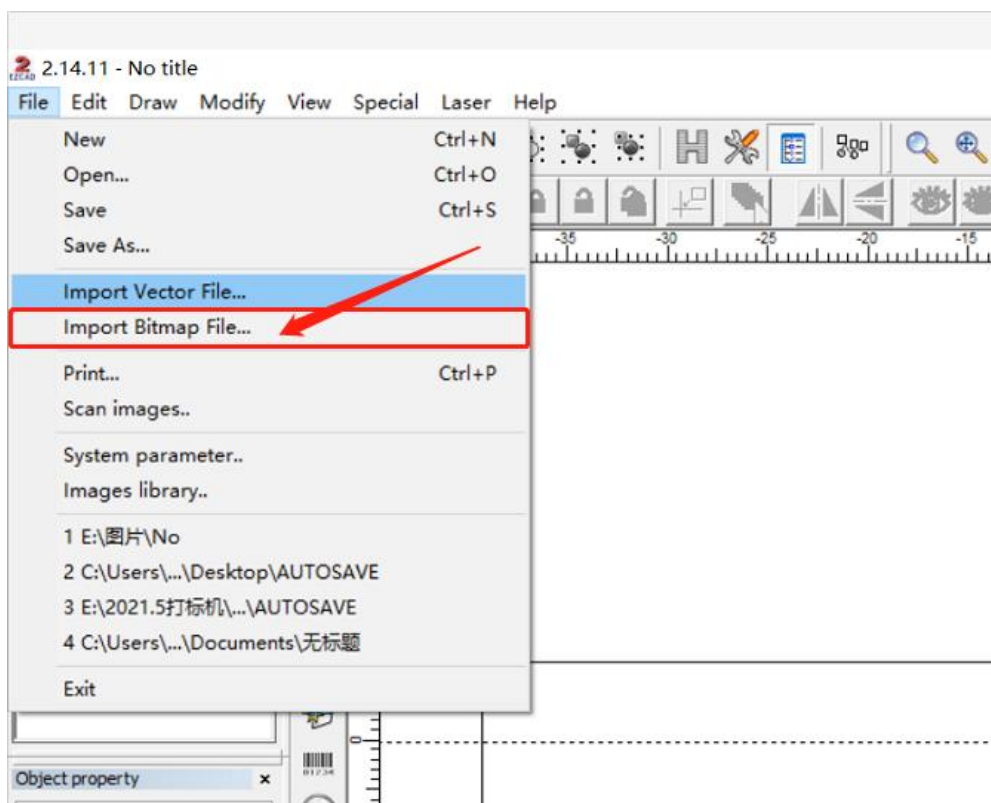


Step 2: Click Import Vector File (CAD Format), open marking File.






Click Import Bitmap File (Image Format), Look for the Picture you' d like to mark, Click Open.




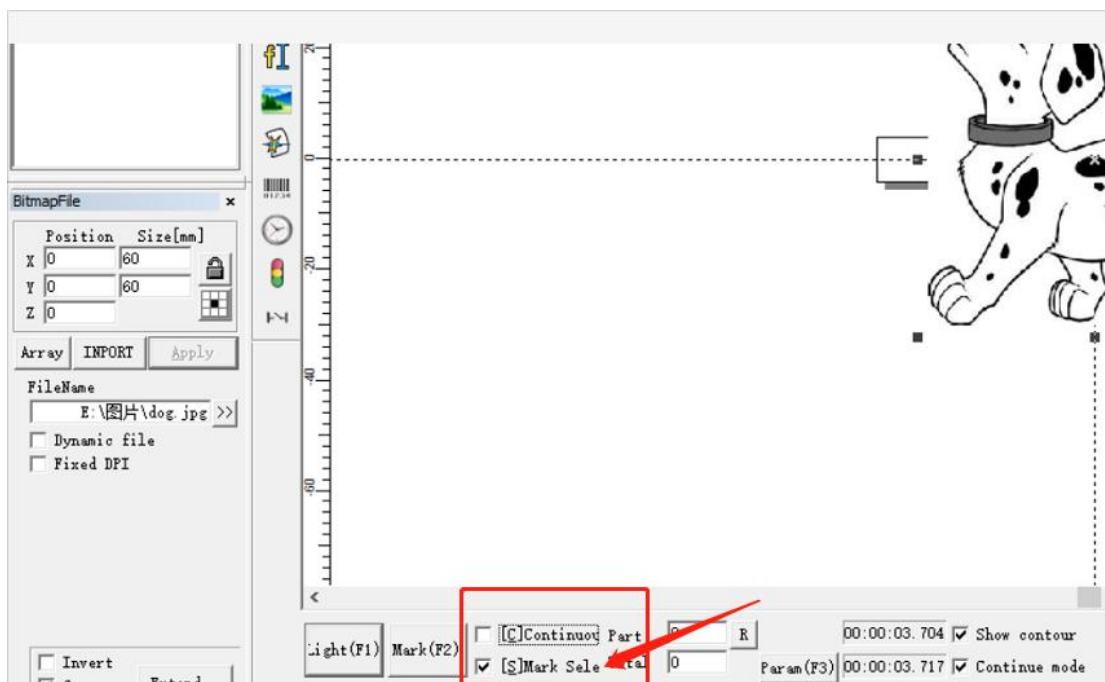
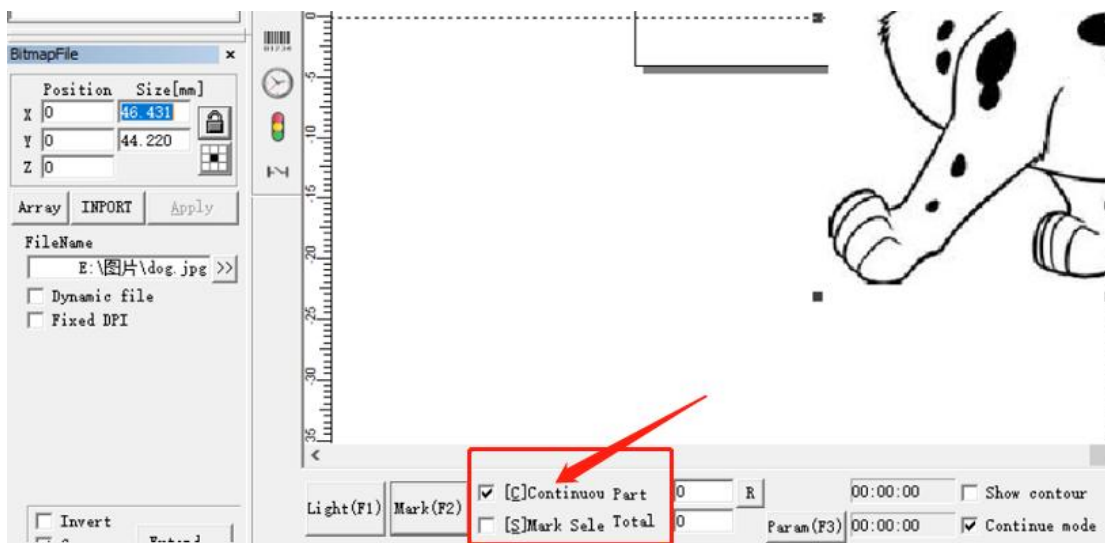


## 7. How to set up single marking and multiple times marking

Find out the Bottom left "Mark"

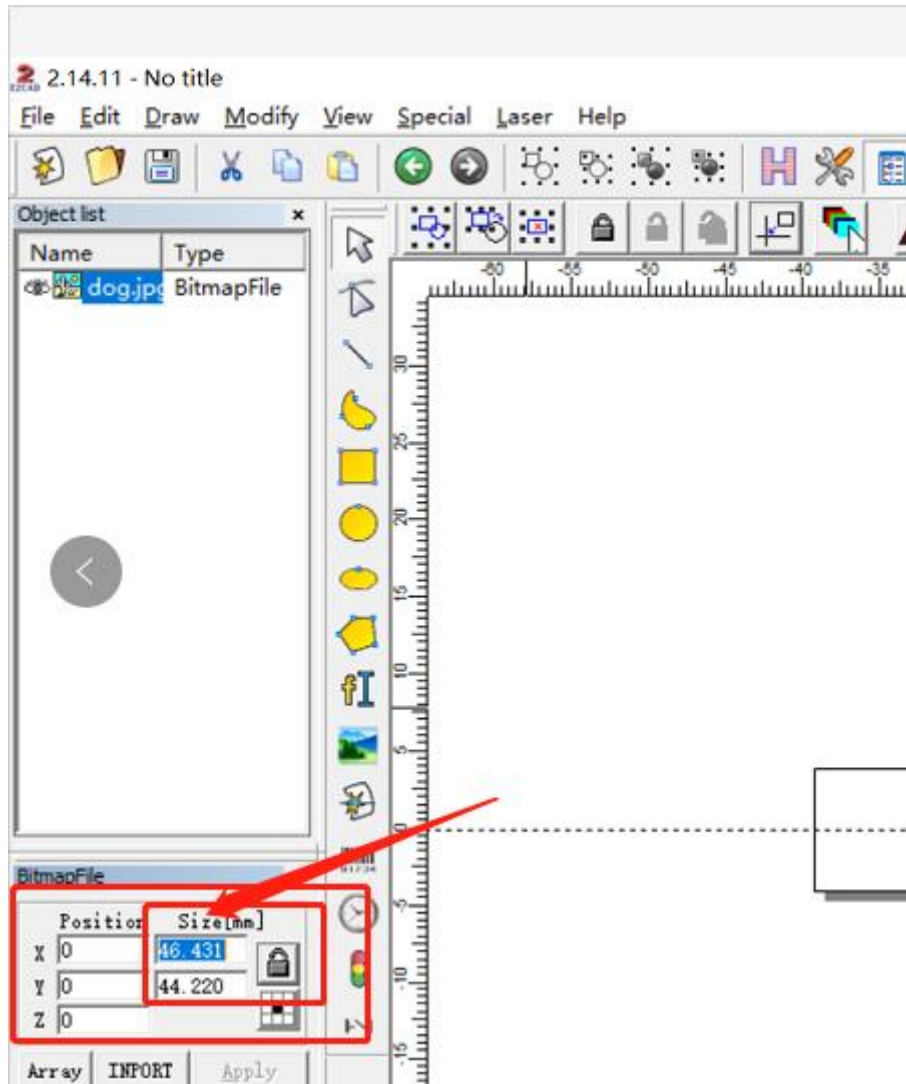
Choose  continue means Marking multiple times

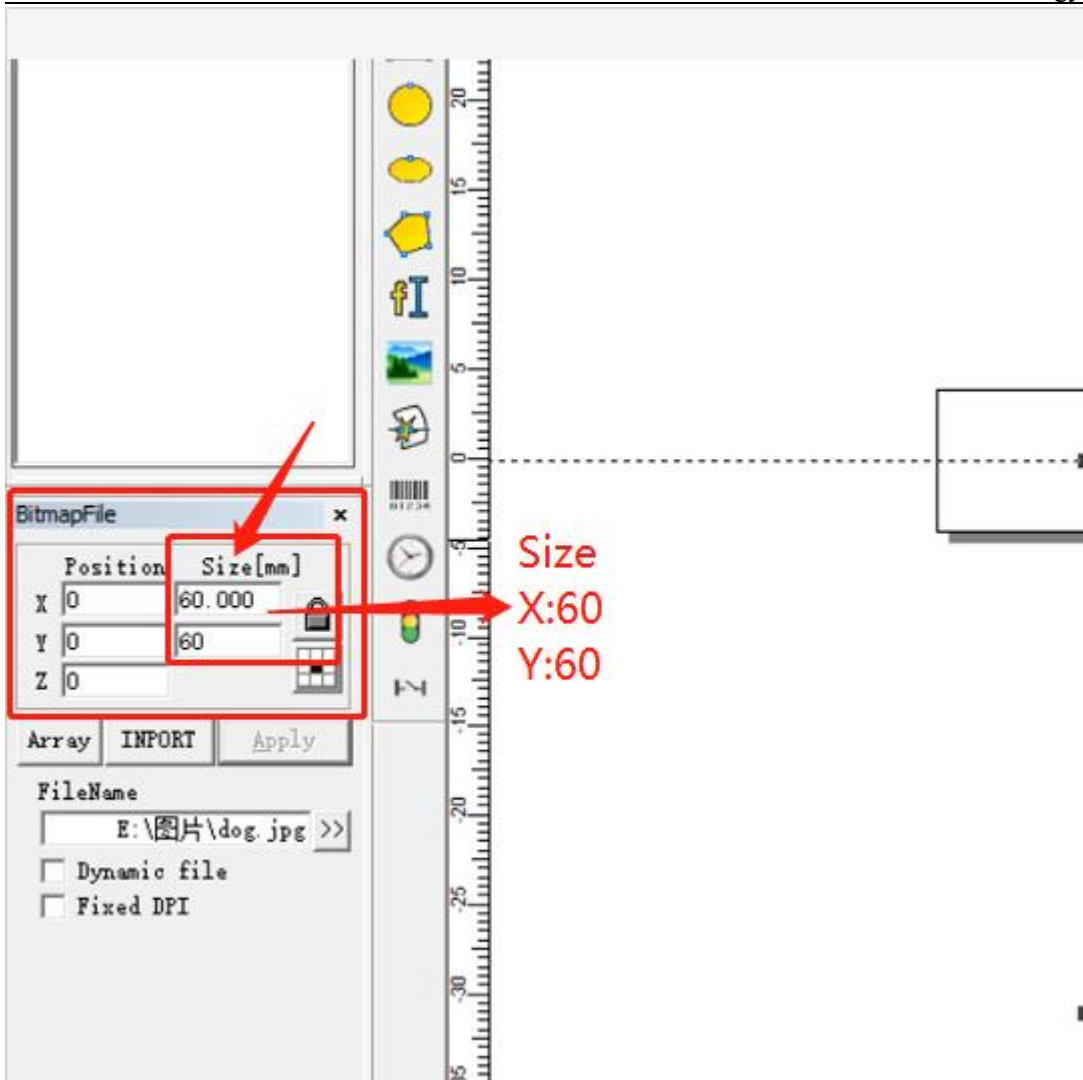
Choose  sole means Single marking



## 8. How to set up marking range

Click Size, change the number to 60(X) 60(Y) <Standard Range>.





## 9. Marking parameter settings

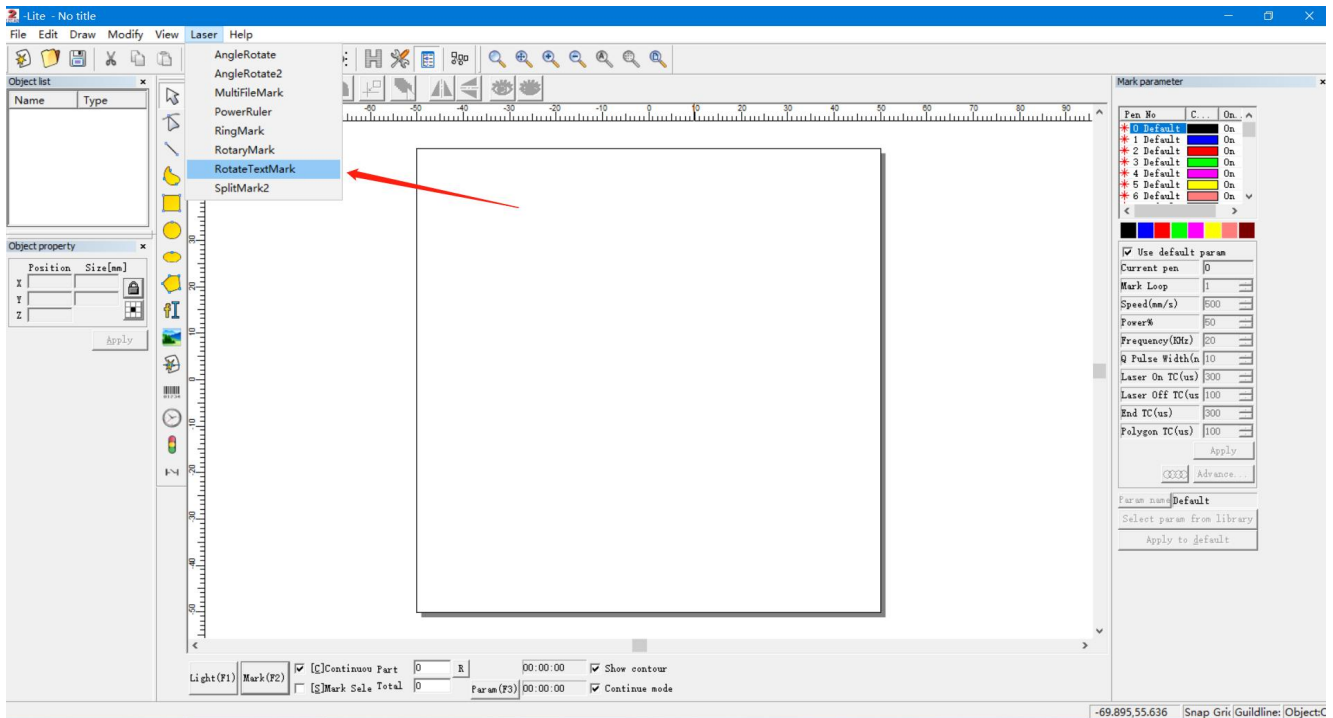
(Take 30W 110x110 as an example)

30W 110x110 Format			
Material	Aluminum	Stainless Steel	Copper
Speed	500	500	500
Power	50	50	50
Frequency	20	20	20
Laser on TC	-300	-300	-300
Other	Default		

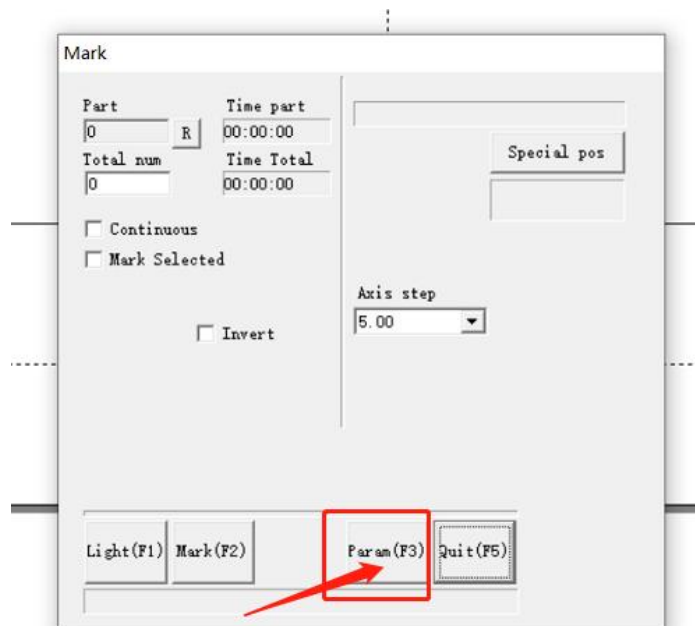
## 10. Doing marking on rotary axis

### A: Marking TEXT

Click "Laser", choose "rotate TextMark"

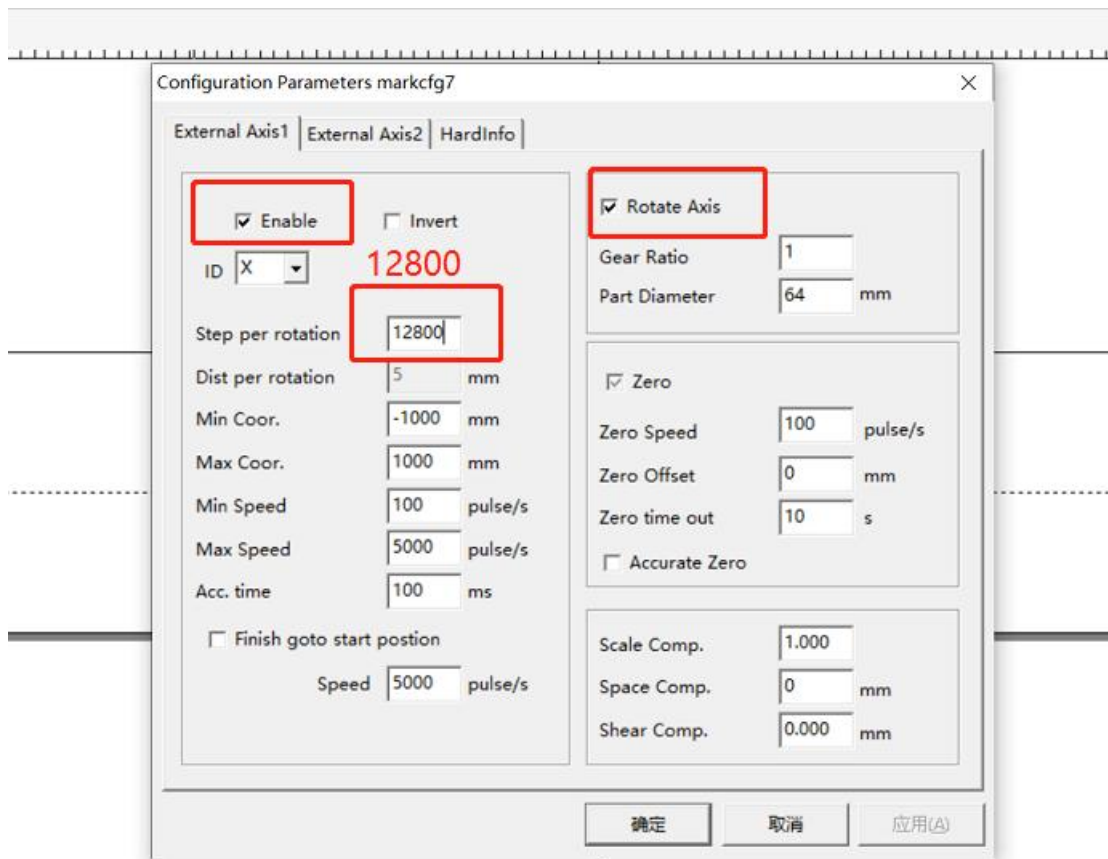


Click "Param (F3)"

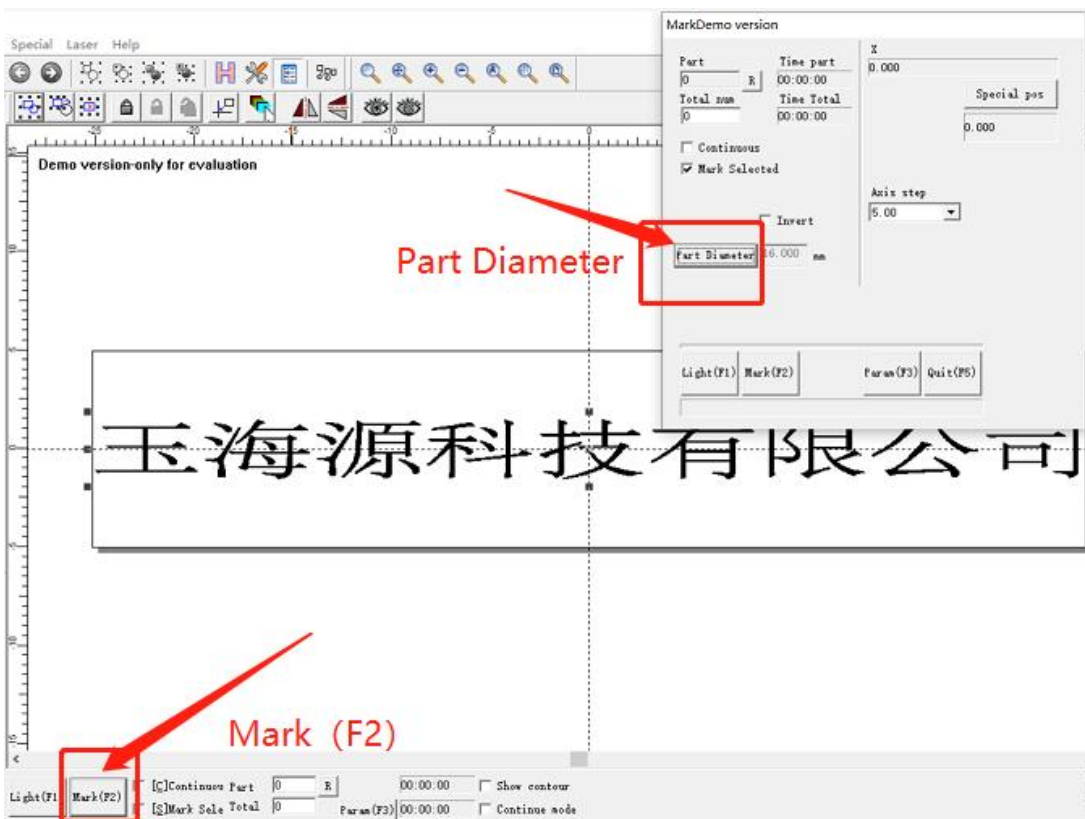
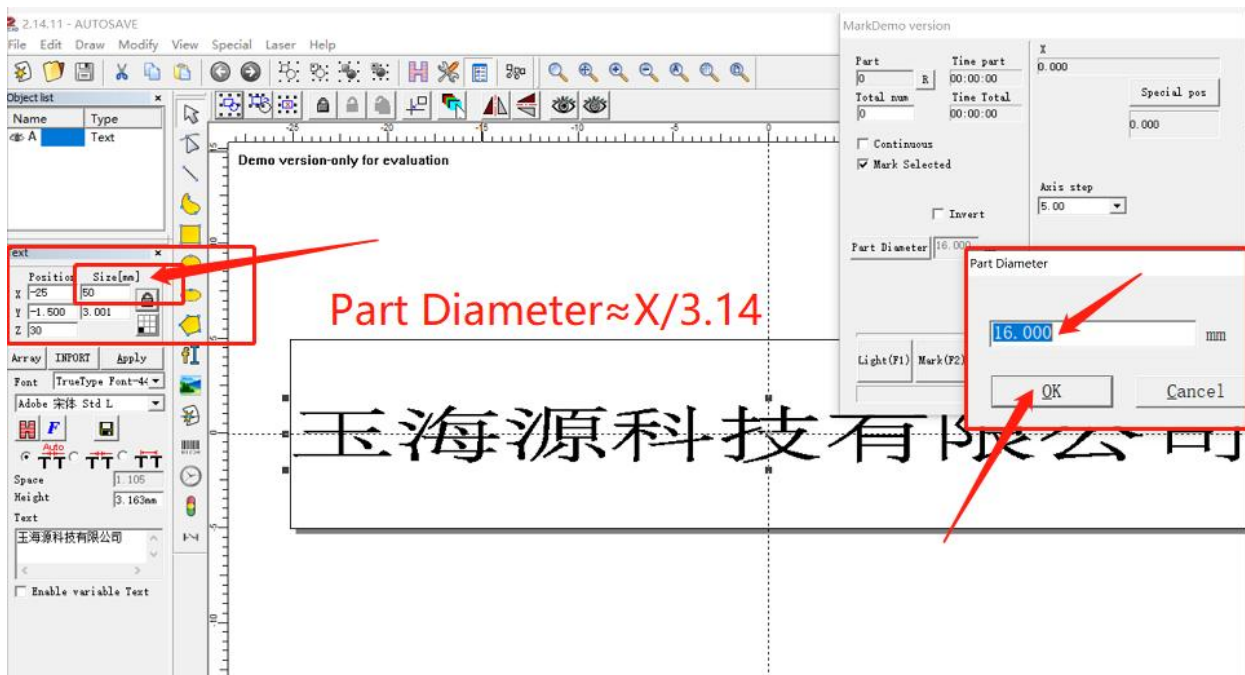




Check "enable" "Rotary Axis", set up "Step per rotation to 12800", Click OK.



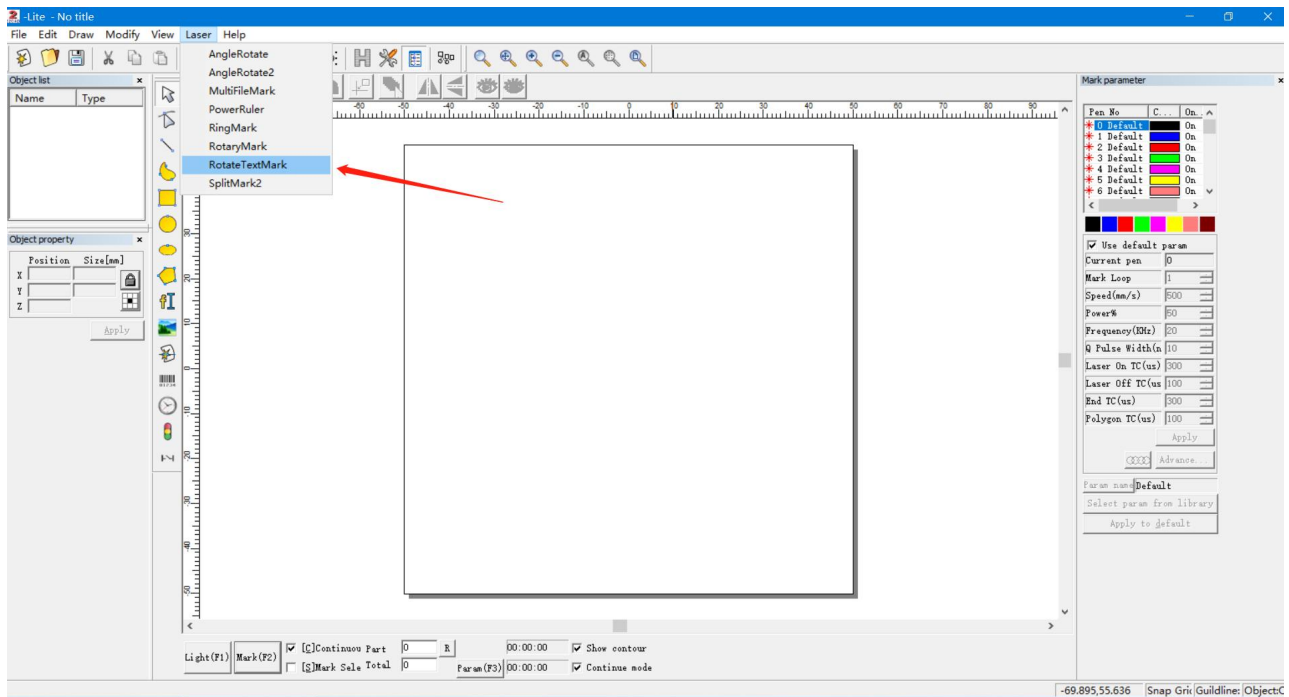
Find out the "Mark" button in the bottom left corner, Click "Part Diameter" . (Part Diameter =  $X/3.14$ ).



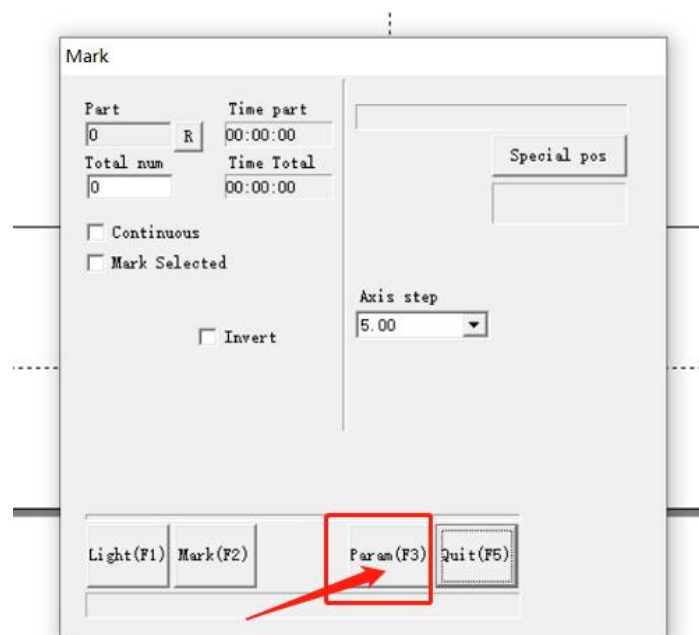
Click OK, finish rotary axis parameter setting. Start Mark.

## B: Marking pictures

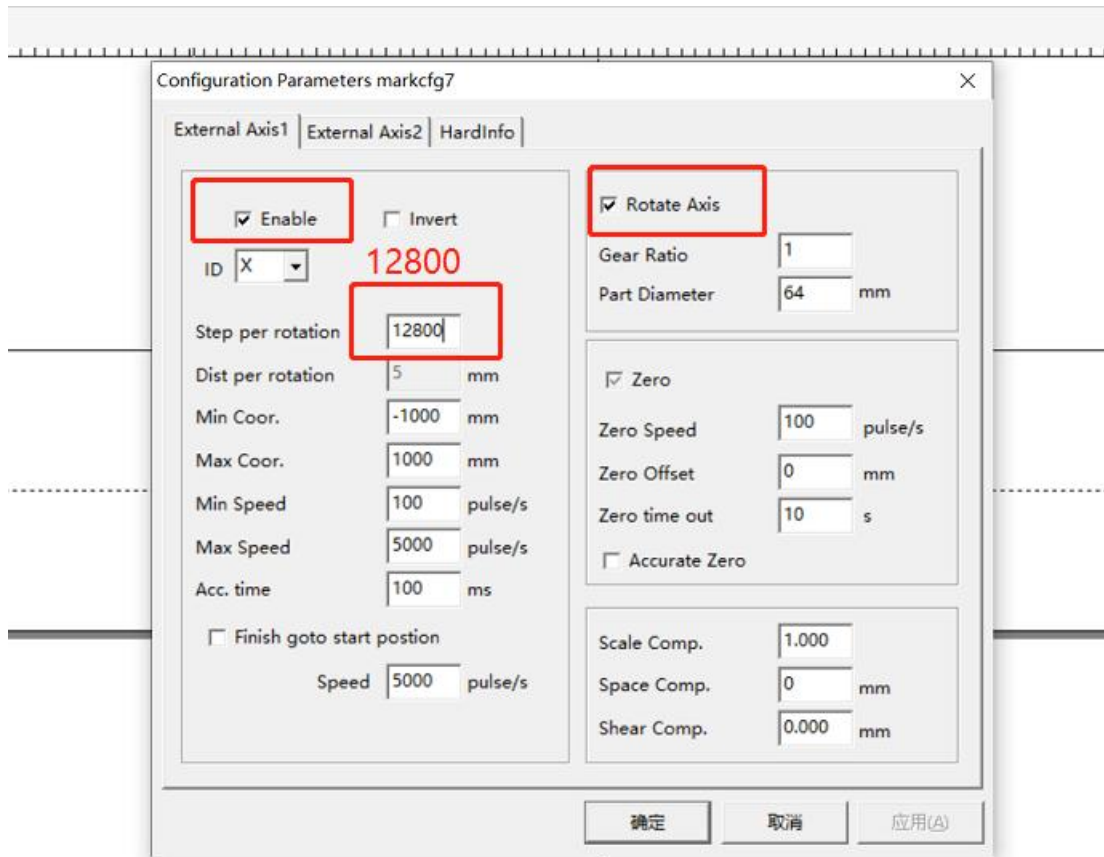
Click Laser, choose "SpilitMark2"



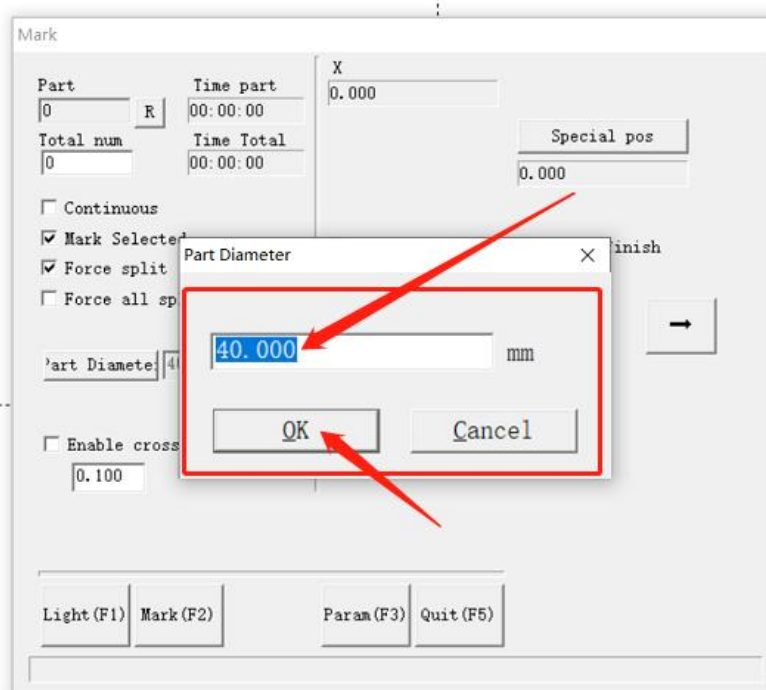
Click "Param (F3)"



Check "enable" "Rotary Axis", set up "Step per rotation to 12800", Click OK.

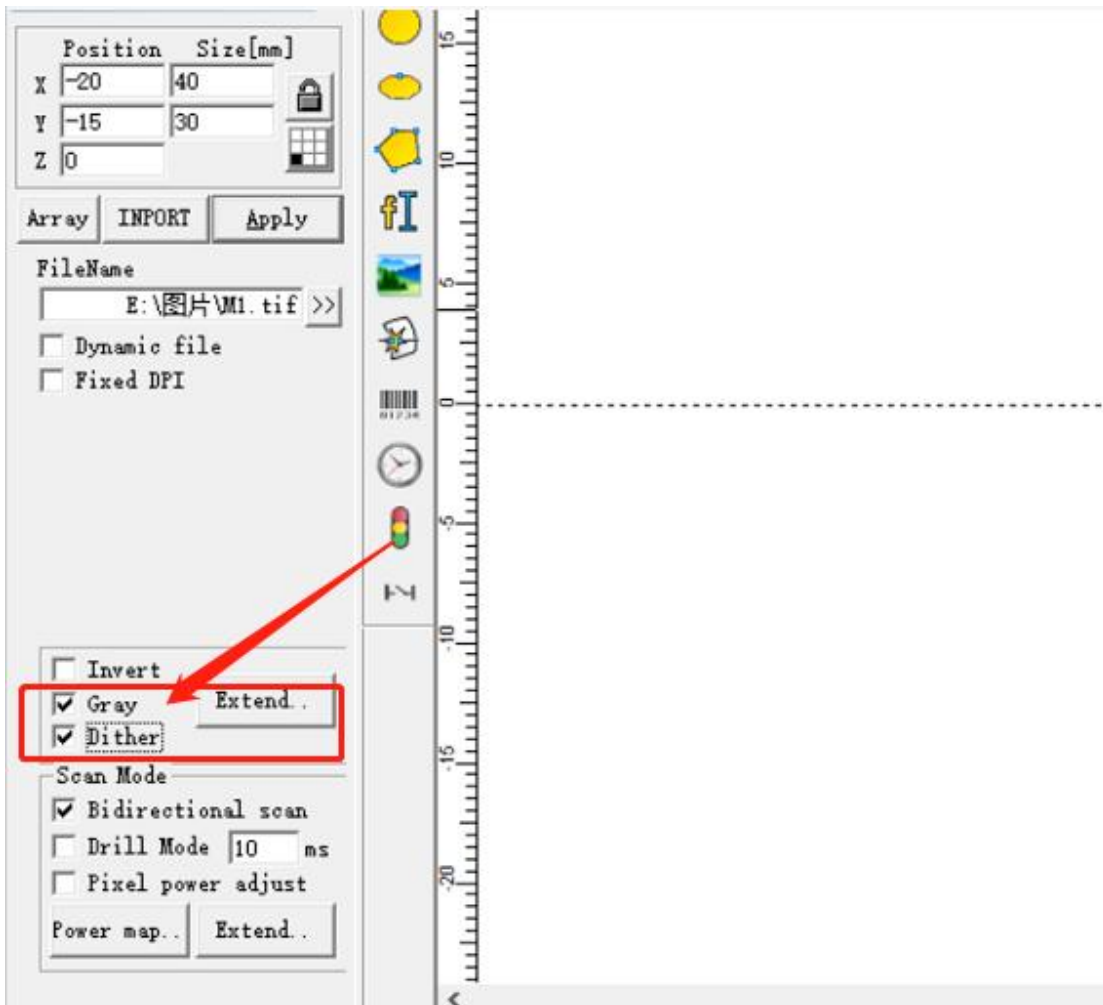


Find out the "Mark" button in the bottom left corner, Click "Part Diameter", set up Part Diameter.  
(Diameter is the actual size of the material.)





Choose "Gray" and "Dither"



Choose "Gray" and "Dither" sample

Choose "Gray" sample

## 11. Q&A

Q: What should I do if the U-Disk is not found in the package?

A: This is because the customs took out the U disk during customs clearance.

Please contact customer service in time and leave your email. We will send you the U-Disk Files.

Q: If the computer prompts that file has a virus when I install the JCZ software, what should I do?

A: You must close all anti-virus software on your computer before installing the software.

Q: When I install the Ezcad software, it shows "Ezcad-Lite work only with UsbLmc- Lite, use Ezcad!"

What should I do?

A: This is because your computer version cannot match the software.

Please contact us if you encounter this problem.

Q: What should I do if the effect of my marking is too shallow?

A: You can choose continuous marking. If you're using 175x175mm field lens, please change to 110x110mm field lens.

Q: I bought a machine with a 110x110mm field lens, can I change other size field lens?

A: Yes. You can change it to 175\*175mm or other smaller than 200\*200mm.