

CNC6090 CNC 3 USB CNC 2200W
 3000mm 3000mm 3000mm 3000mm 3000mm 3000mm.

150mm CNC 100mm.





A series of horizontal lines for writing, consisting of 15 evenly spaced, light gray lines on a white background.

□□□ □□□□ □□ :

- USB □□□□□□ □□ □□□ □□□□ □□□□ □□□□.
- □□□□□ □□ □ □□□□.
- SD □□ □□ □□□□□□
Wi □□ SD □□ □□ □□□□□□ □□□□□□.
- 2.2KG□, powerfu□ □□□□ □□□!
- □□ □□ □□.
- □□□□ □□□□ □□□ □□.

□ **CNC6090** □□□ **CNC** □□□ **3** □□ □□ □□ □□□□□□?

- USB □□□□□□
- □□ □□□□.
- □□ □□□ □□ □□ **3** □□□□□□ (□□)
- □□□□ □□ □□□□, □□, □□, □□□□□, PCB □□ □□ □□ □□□□□.
- □ □□□□□ □□ □□□□□□.
- □□□□ **4** □□□□ □□□□ □□ □□□□ **6090 CNC** □□□□
- □□ □□ □□, □□ Z □□ □□ □□□□□□
- □□□□ □□□ □□ □□□□ □□□□ □□
- □□□□ broaded□□□□□ □□□□ □□□ □□ □□□□□□.
- □□ □□□□ □□□□□.
- □□□□ & A□□; □□ trustable □□ □□ **CNC** □□□□ □□□□□.

02 Parameters **ChinaCNCzone**

CNC6090 □□□ CNC □□□ 3 □□ □□ □□	
□□ □□	X860mm * Y630mm * Z480mm
Max.workpiece □□	X600mm * Y900mm * Z150mm
□□□□ □□	□□□□ 6063 □ 6061 □□□□ □□ □□ □□ □□□□ □□. □□ □□□□ □□□□
□□ □□□□ □□ □□	≤150mm
□□□□	X : 1605 □ □□□
	Y : 2005 □ □□□
	Z : 1605 □ □□□
□□□□ □□□□	X : Dia.30mm □□ □□□□ □□□□
	□□□□: Dia.30mm □□ □□□□ □□□□
	□□□□: Dia.16mm □□ □□□□ □□□□
□□□□ □□ □□	57-76 □ □□□ 3A 150N.cm
□□□□ □□	□□ □□□□ 2.2KW □ □□ □□□□, 24000RPM
□□□□ □□	ER16-A, 3~10mm □□ □□ □□
□□ □□□□	□□ LT = 0.05 □

Resolution	Resolution acuity 0.03 mm
Input	Input / TAB / NC / NCC
Width	4,000mm /
Height	0~2,500mm / (Height adjustable)
Weight	Weight
Connectivity	3 USB ports
Power	Power consumption
Power Supply	AC110V / AC220V

03 Product Images **ChinaCCzone**

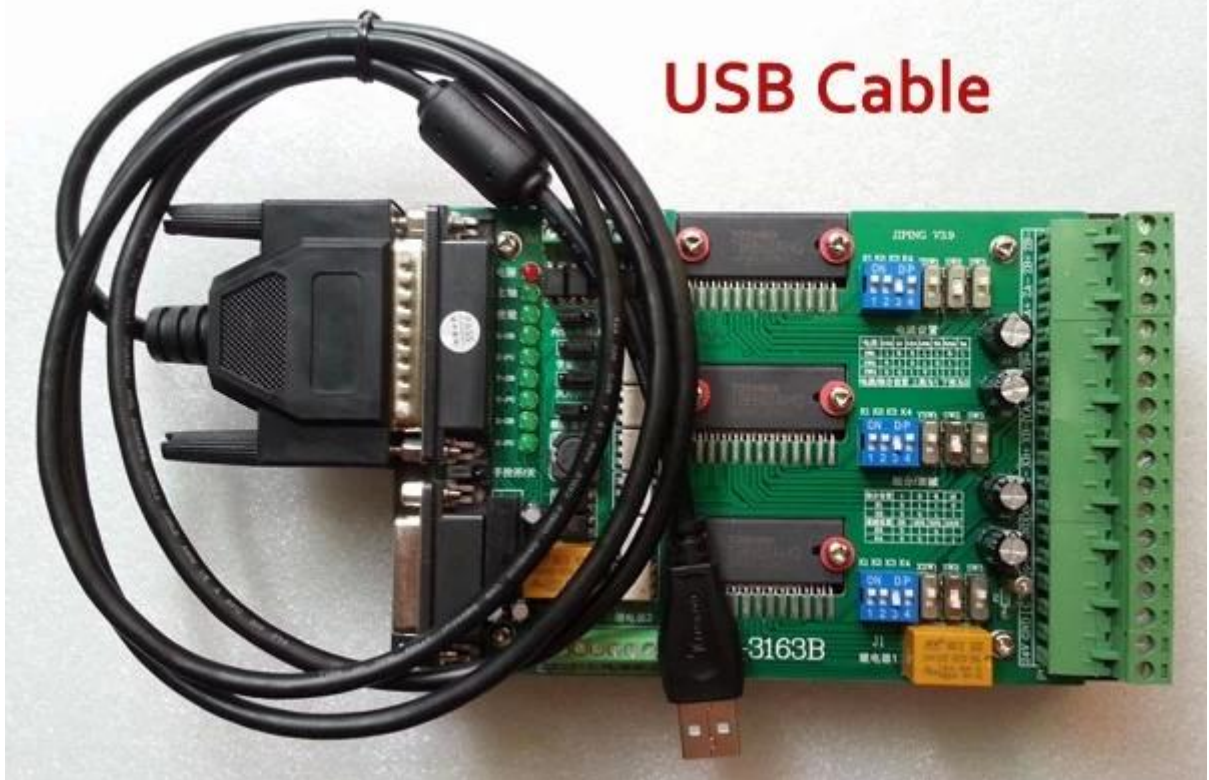




Ball screw high precision



USB Cable

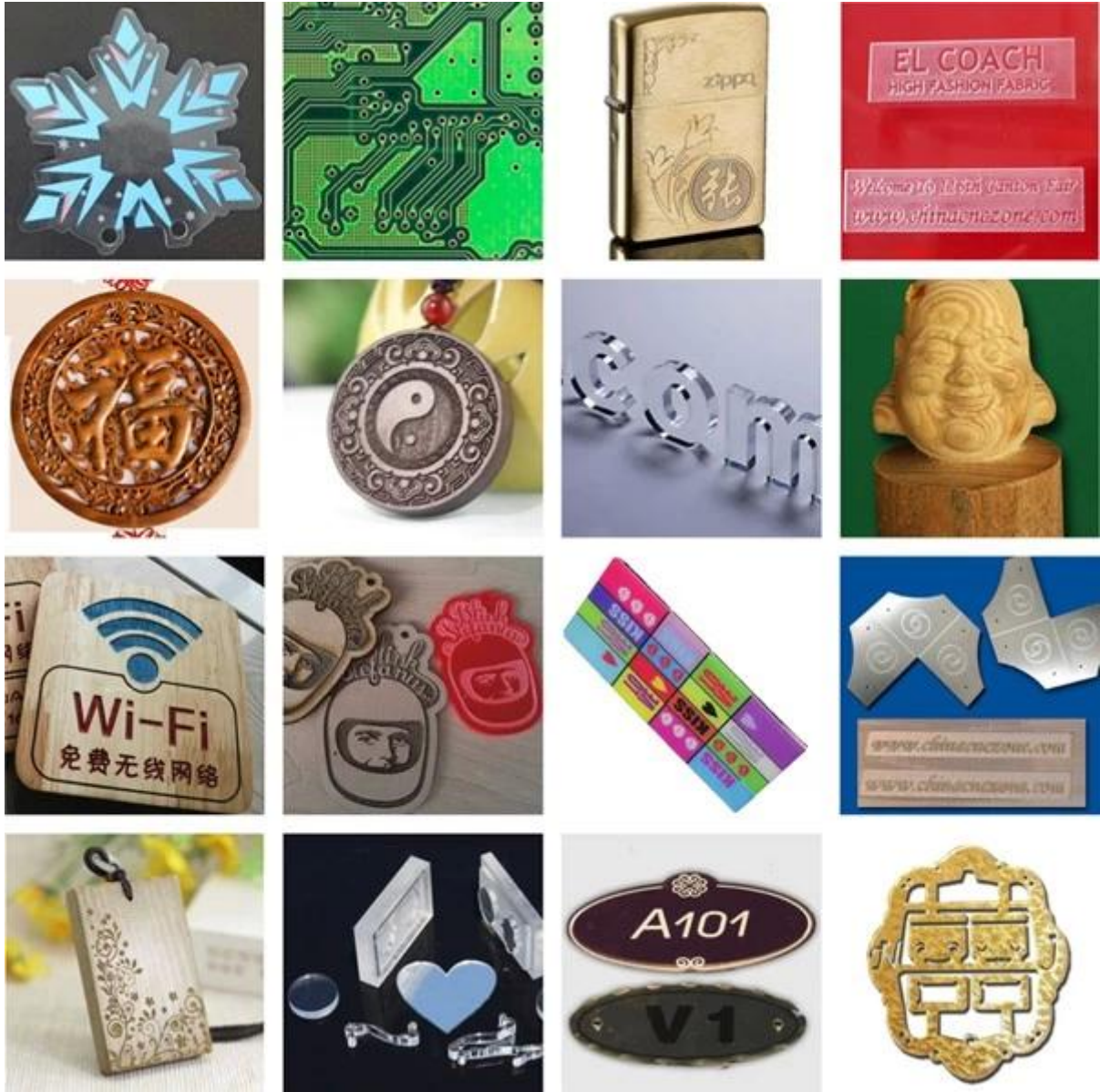


CNC 6090 〇〇 CNC 〇〇 〇〇 3 〇



04 Applications ChinaCCzone

□ □□ CNC6090 □□□ CNC □□□ 3 □ □□ □□, □□□, □□, alumimun, PVC, PCB □□□□ □ □□ □ □□.



05 Factory Tour

ChinaCNCzone

ChinaCNCzone 提供不同材料、不同规格、不同形状、不同尺寸、不同精度、不同表面处理的 CNC 加工服务。



QA Inspection Area



Mechanical Assembly Area



Machine Commissioning Area



Finish Products Area

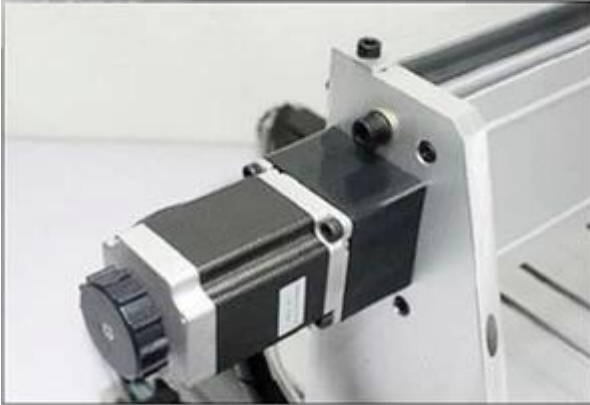


Packaging Area



Always be imitated, never be surmounted.

We all use well-designed professional aluminum to manufacture the machine. Almost all of the structural member are extruded by a dedicated mold. The production of large quantities so that we have a strong price competitiveness. Professional mold and materials so that our quality has been stable protection.





SHENZHEN SCOTLE TECHNOLOGY GROUP LIMITED

ChinaCNCzone, engrave your colorful life!

客户合影及公司文化 Customers and Company Culture



