

CNC6040 3 CNC DSP (1500W 2200W) 3

- 1,500w / 2,200w DSP
2. SD (5) 6.2KG, powerfu
- 3.
4. SD (5)
- 7.
- 8.
9. CNC 6040 4
- 10.
- 11.
- 12.
13. MACH3 USB CNC
- 14.
15. Z
- 16.
17. Can PCB
18. 80mm
- 19.

MACH3 DSP

1. DSP
2. TF
- 3.
4. G

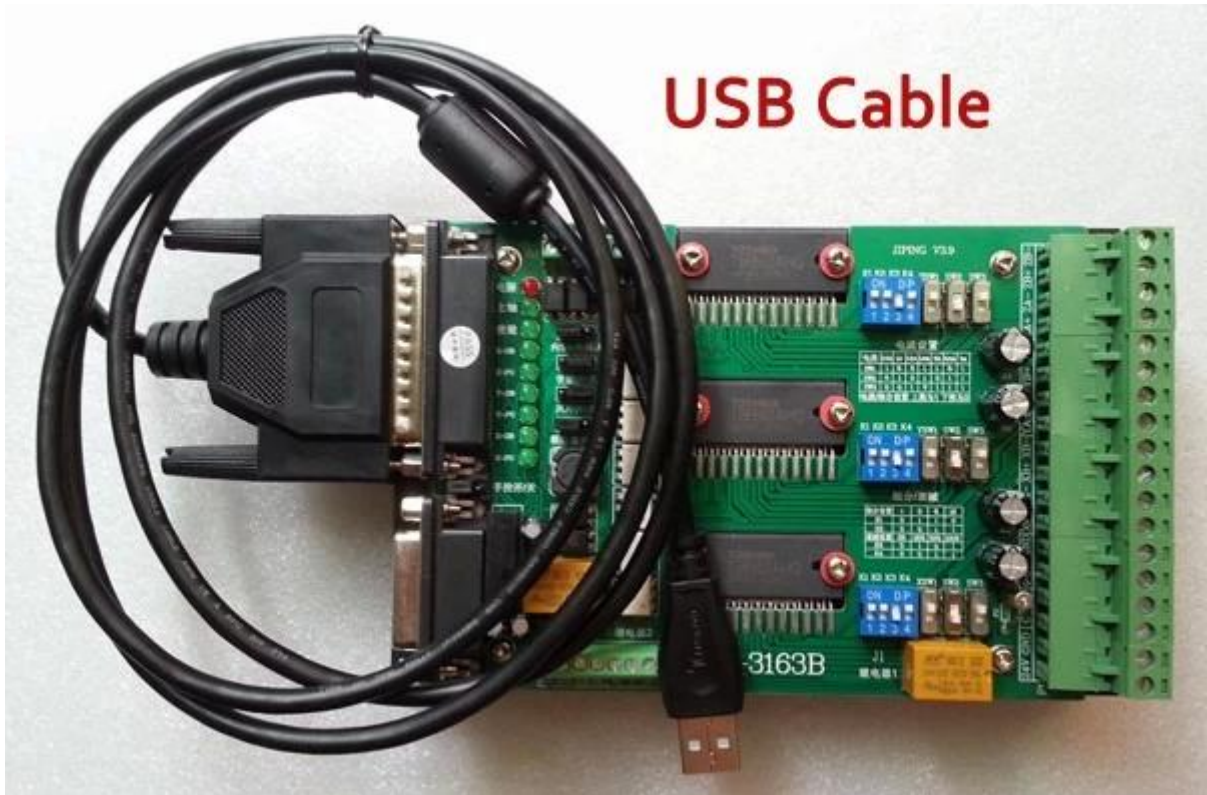


CNC6040 3 CNC	
工作空间	375 (X) mm * 535 (Y) mm * 65 (Z) mm
外形尺寸	890 * 690 * 525mm
占地面积	742mm * 480mm
主轴	6063 6061 铝制 高速 主轴 转速 0-24000 RPM. 最大 行程
主轴行程	≤95mm
行程	1605 mm (X / Y / Z)
滑轨	Dia.16mm 滑轨 (X)
	Dia.20mm 滑轨 (Y)
	Dia.13mm 滑轨 (Z)
滑轨精度	(57) 精度 3A 150N.cm
电机	1500W 三相异步电机, 24000RPM
刀柄	ER-11A 3-7mm, ER-16A 3-10mm
步距	0.05mm
定位精度	±0.03 mm
控制系统	MACH3 控制卡 XP, USBCNC 控制卡 XP, 7 轴
速度	0~4,000 RPM / 分
接口	控制卡 + PWM 控制卡 + TB6560 3 轴驱动
接口	USB 控制卡
软件	控制卡, 控制卡 MACH3 控制卡
电压	三相异步电机
电压	AC220V
重量	控制卡, 控制卡, 控制卡, 控制卡
尺寸	控制卡
尺寸	控制卡 * 52 * 43cm 控制卡, 60, 80 * 22 * 63cm
重量	58kg





USB Cable





DIY 4 Axis CNC Router 6040 CNC Router:
Aluminum, Brass, Steel, PVC, PCB, Acrylic, Marble, Granite, etc.
Machining: Milling, Drilling, Turning, Bore, etc.
Machining: Milling, Drilling, Turning, Bore, etc., RC, etc.





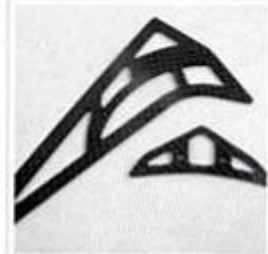
PVC



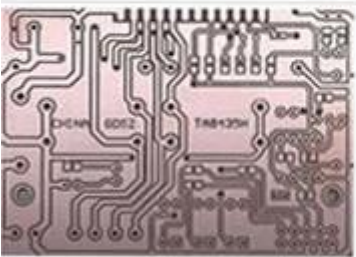
DOUBLE COLOR BOARDS



WOOD



CARBON FIBER REINFORCED PLASTICS PLATE



PCB



WAX



DOUBLE COLOR BOARDS



EPOXY TOOLING BOARD







QA Inspection Area



Mechanical Assembly Area



Machine Commissioning Area



Finish Products Area

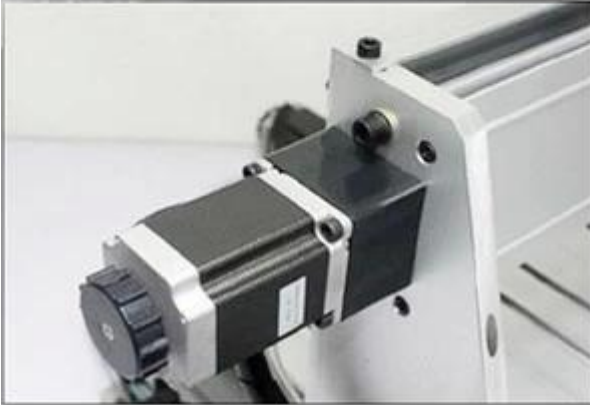


Packaging Area



Always be imitated, never be surmounted.

We all use well-designed professional aluminum to manufacture the machine. Almost all of the structural member are extruded by a dedicated mold. The production of large quantities so that we have a strong price competitiveness. Professional mold and materials so that our quality has been stable protection.





SHENZHEN SCOTLE TECHNOLOGY GROUP LIMITED

ChinaCNCzone, engrave your colorful life!

客户合影及公司文化 Customers and Company Culture

