

FLM-002 20 w

10 w

CNC 6040, CNC 6090

- 1.
  2. 100000
  3. 35KGS
  4. PHOTOSHOP, CORELDRAW, AUTOCAD
  - 5.
  6. 2
  - 7.
  - 8.
  - 9.
  - 10.
  - 11.
- FLM-002 20 w 4

Name	Origin(brand)	Remarks
Optical maser	Maxphotonics(Raycus, IP fiber laser optional)	Long service life, high reliability, fine beam quality
Galvo mirror	Galvo-tech(digital)	Fine marking, more quick and high reliability
F-θ lens	wavelength	High quality optical device
Marking software	Special marking Software (Ezcad2 software)	Powerful, simple and convenient operation, Auto-cad, CorelDraw, Photoshop software compatible form
Control cabinet	China	Optical fiber special cabinet, all the mold production, high seal

电压: 110 v/220 v

光源品牌: Maxphotronics (Maxphotonic/IPG 激光光源)

功率: 10 w

波长: 1064 nm

频率: 20-100 kHz

速度: 0-8000 mm/s

精度:  $\pm 0.003$  mm

厚度: 0.015 mm

厚度: 0.15 mm 可定制

厚度: 可定制

厚度: 110x110mm /220x220mm

功率: 0.5KW 220 v/50 Hz 110 v/60 HZ 可定制

软件: 2D-3D CAD CorelDraw Photoshop 可定制

软件: 可定制

重量: 80KGS

尺寸: 100 \* 75 \* 158 cm

重量: 115 KG



## A MIRROR

### 01场镜 | 良好光感 光照均匀

体积小，适用于恶劣环境，

界面友好，所想所见即所得。

Using the third generation of optical fiber laser technology, high-speed permanent free maintenance



## GALVANOMETER

### 02振镜 | 打标效果好 不失真

振镜扫描系统采用新技术，新材料，新工艺，新工作原理设计和制造。

Using a full set of German imported accessories, laser and galvanometer laser long service life

## ELEVATOR SHAFT

### 03升降轴 | 高精度 方便

进口优质，高能，稳定的光纤激光器，高速精密光学振镜组件和业界顶级的软件系统

In a certain shock, vibration, high temperature or with ash, etc. Also can work normally under the harsh environment





## WORK PLATFORM

### 04工作平台|专业灵活

结构紧凑，兼顾，轻便，小巧，接口简洁，  
加工方向灵活可调，驾驭自如

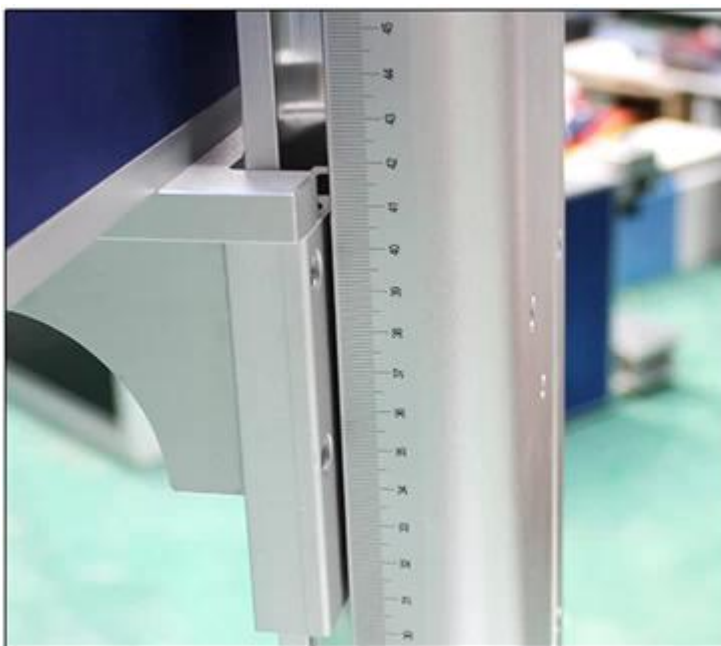
Small size, suitable for bad environmen  
laser realize laser range through fiber  
optic cable transmission, compact  
structure

## CONTROL PANEL

### 05控制面板|简单易学

人性化控制系统，新增防尘塞设计  
控制系统简单易学，可脱机使用

Humanized control system, the new  
dustproof plug design,  
Control system is easy to learn,  
can be used offline



## SCALE

### 06标尺|高精度 准确

高性能标尺，标刻效果更精美，  
打标定位更准确

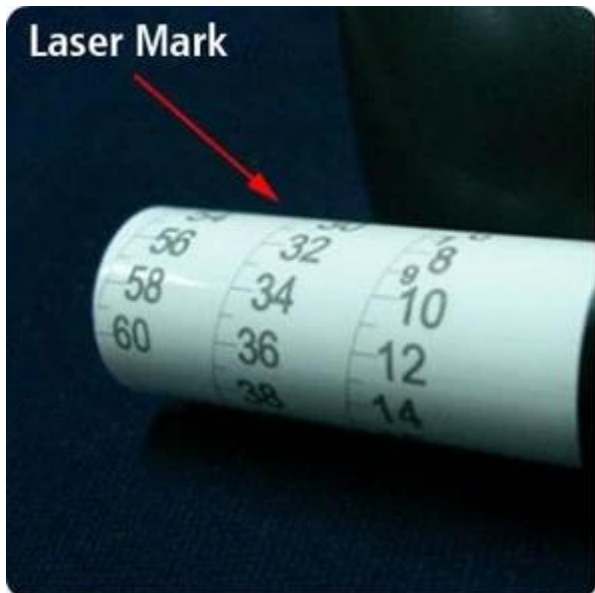
High performance scale, engraving  
effect more beautiful,A calibration  
more accurate

FLM-002 20 w :  
 FLM-002 20 w

FLM-002 20 w  
 ( ) ( : )  
 ( )



Laser Mark



Laser Mark



Laser Mark



Laser Mark



Laser Mark





Laser Mark



Laser Mark

Materials: Stainless Steel



Laser Mark

Materials: Stainless Steel



Laser Mark



Laser Mark









07 *Company culture*

China  zone

# SHENZHEN SCOTLE TECHNOLOGY GROUP LIMITED

ChinaCNCzone, engrave your colorful life!

## 客户合影及公司文化 Customers and Company Culture

