

01 Product Highlight

CNC 6090 4轴 CNC 功率2200W

工作台1500x1000x100mm 行程1000x1000x100mm

主轴转速15000rpm 冷却液系统 精度0.01mm





A series of horizontal lines for writing, consisting of 18 evenly spaced lines.

特點

- USB
- 無線Wi-Fi
- SD卡
- 2.2KG
- YouTube

主要特點 CNC 6090 CNC 4

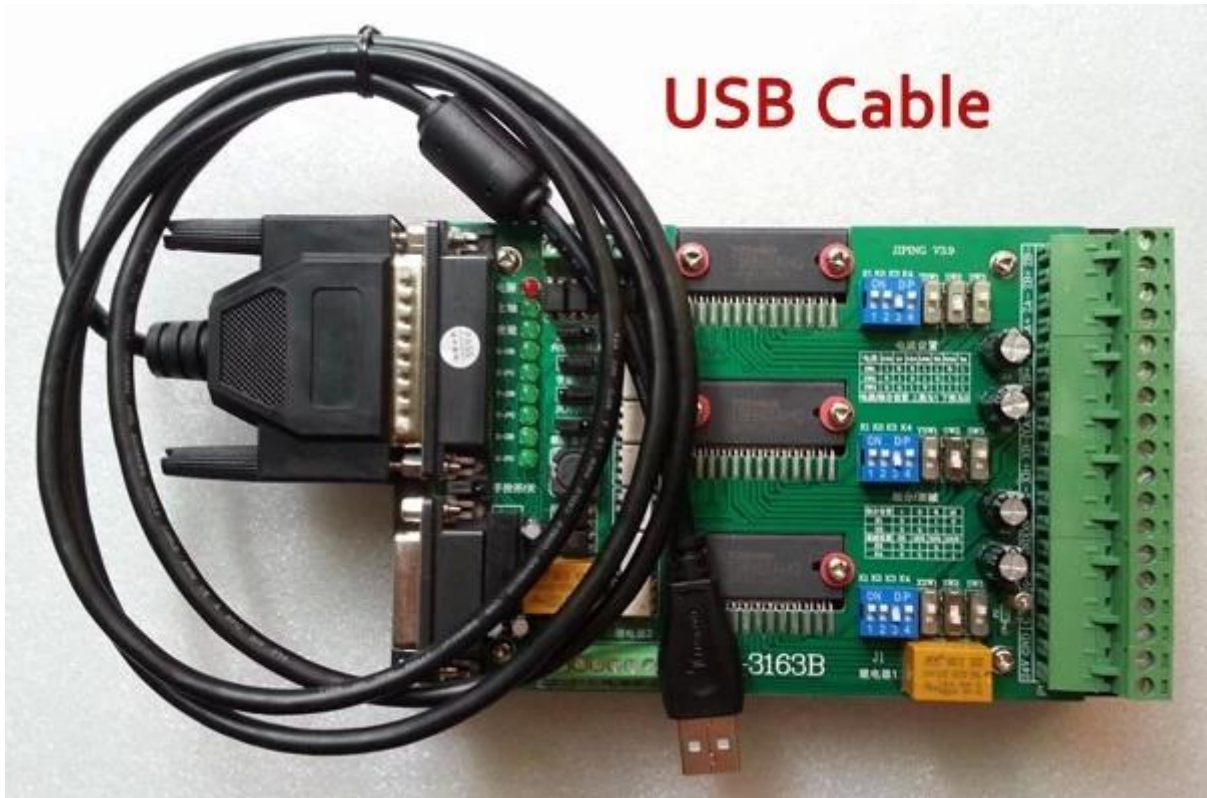
- 3軸
- PCB
- CNC
- Z
- broaded
- &



CNC 6090 4 CNC	
尺寸	X860mm * Y630mm * Z480mm
Max.workpiece	X600mm * Y900mm * Z150mm
重量	約6063 6061
最大加工深度	≤150mm
行程	X 1605
	Y 2005
	Z 1605
最大加工直徑	X Dia.30mm
	Y Dia.30mm
	Z Dia.16mm
最大加工長度	57 76 3A 150N.cm
最大加工速度	2.2 24000RPM
最大加工直徑	ER16-A 3 10

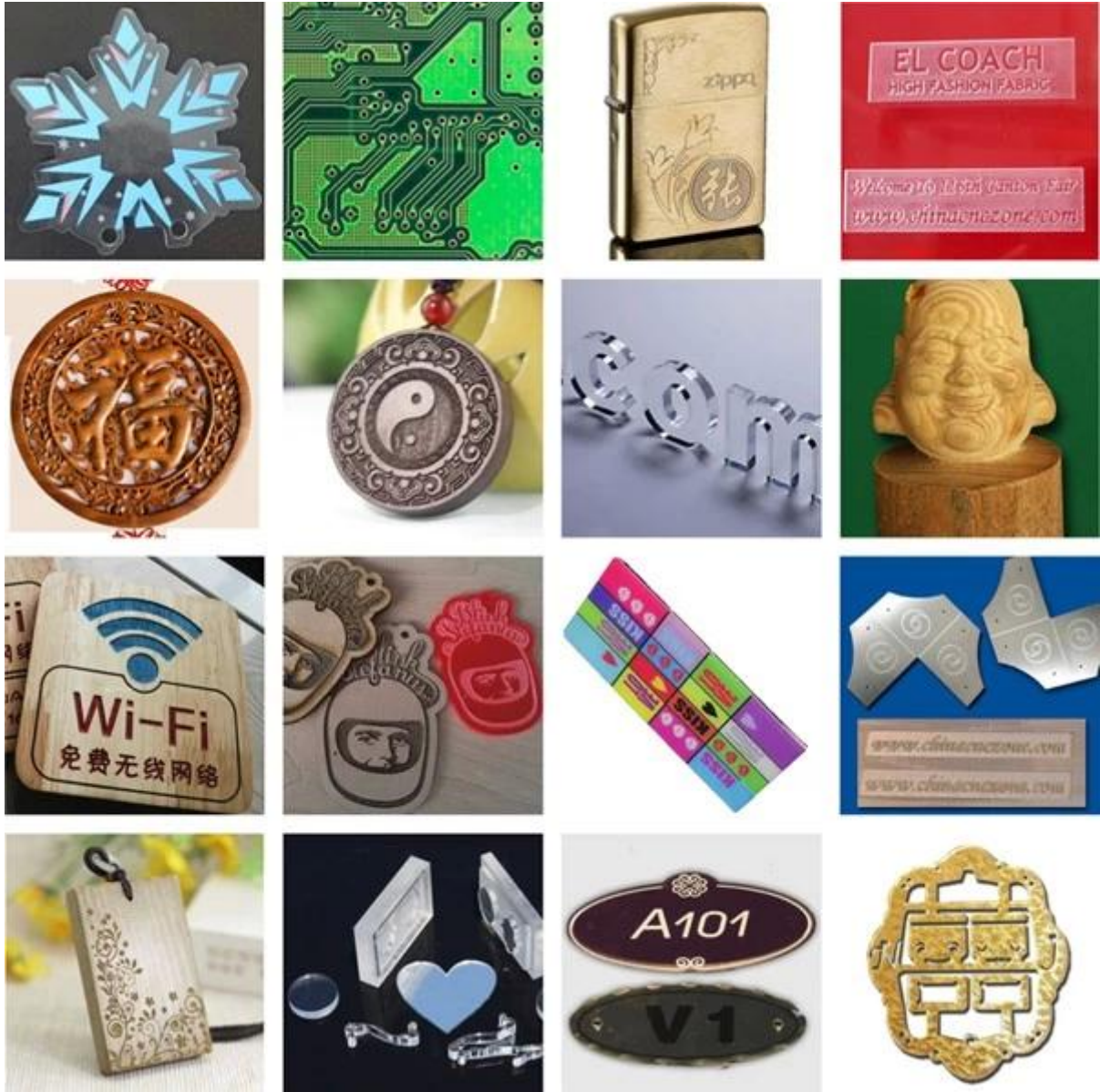
□□□□□□	< = 0.05□□□□□□
□□□□□□□	□□□□ acuities□0.03□□□□□□□□□□
□□□□□□□□	G □□□/ TAB□□□□/ NC□□□□/ NCC□□□□
□□□□	4000□□□□□□□/□
□□□□□□□□□	0□2500□□□□□□□/□ □□□□□□□□□□□□
□□□□□	G □□□
□□□□□□	□□□ 3□□□USB□□□□□□
□□	□□ □□□□□
□□□□	AC110V / AC220V





CNC 6090 4轴CNC





05 *Factory Tour* **ChinaCNCzone**

ChinaCNCzone 提供不同材料、不同规格、不同形状、不同尺寸、不同颜色、不同表面处理、不同精度的 CNC 加工服务。



QA Inspection Area



Mechanical Assembly Area



Machine Commissioning Area



Finish Products Area



Packaging Area



Always be imitated, never be surmounted.

We all use well-designed professional aluminum to manufacture the machine. Almost all of the structural member are extruded by a dedicated mold. The production of large quantities so that we have a strong price competitiveness. Professional mold and materials so that our quality has been stable protection.





SHENZHEN SCOTLE TECHNOLOGY GROUP LIMITED

ChinaCNCzone, engrave your colorful life!

客户合影及公司文化 Customers and Company Culture



