

Desktop FLM-002 20W Fiber Laser Engraver Machine Equipment for Engraving Marking Metal

Have 20W/10W for your selection

Desktop version

price Most competitive with high configuration.

Compared with our [mini CNC router](#) such as [CNC 6040](#), [CNC 6090](#), this Portable [Fiber Laser Marking Machine](#) is specially designed for metal and non-metal engraving

[Main features for this Fiber Laser Engraver Machine Equipment](#)

1. Optical Fiber Laser, environment friendly, easy maintenance.
2. Life of the laser can be up to 100000 hours.
3. Small volume and weight, less than 35KGS.
4. Easy operation software, compatible with PHOTOSHOP, CORELDRAW, AUTOCAD
5. Runs without consumable spare parts, no need maintenance, great for continuous working.
6. The galvanometer scanning system is made of optical scanner and servo control of two parts, the whole system adopts new technology, new material, new design and manufacturing.
7. The smallest volume, suitable for harsh environment, friendly interface, easy operation.
8. Adopts the high quality, high energy, high stability fiber laser source, prime precision optical galvanometer assembly and the industry's top software.
9. Compact, lightweight, simple interface, flexible and adjustable processing direction.
10. The master switch, red light switch and galvanometer switch.
11. High precision scale.

This [FLM-002 20W Fiber Laser Engraver Machine](#) mainly consists of four parts: [fiber laser](#), [galvanometer scanning system](#), [computer control system](#) and the [worktable](#)

Name	Origin(brand)	Remarks
Optical maser	Maxphotronics	Long service life, high reliability, fine beam quality
Galvo mirror	Galvo-tech(digital)	Fine marking, more quick and high reliability
F-θ lens	wavelength	High quality optical device
Marking software	Special marking Software (Ezcad2 software)	Powerful, simple and convenient operation, Auto-cad, CorelDraw, Photoshop software compatible form
Control cabinet	China	Optical fiber special cabinet, all the mold production, high seal

02 Parameters

China  zone

Voltage :110V/220V

Fiber Laser Source:Maxphotonic (RAYCUS /IPG laser optional)

Output Power:10W /20W

Laser wavelength:1064nm

Modulation frequency range:20-100kHz

Speed:0-8000mm/s

Precision:±0.003mm

Minimum line width:0.015mm

Minimum height of characters:0.15mm

Cooling way:Air cooling

Marking range:110x110mm / 220x220mm

Laser power supply:0.5KW,220V/50Hz, 110V/60HZ

Software:Auto-cad, CorelDraw, Photoshop software compatible

Rotary device:Optional

Weight:80KGS

Outside packing:100*75*158cm

Gross weight: 115KG

03 Product Images

China  zone



A MIRROR

01场镜 | 良好光感 光照均匀

体积小，适用于恶劣环境，

界面友好，所想所见即所得。

Using the third generation of optical fiber laser technology, high-speed permanent free maintenance



GALVANOMETER

02振镜 | 打标效果好 不失真

振镜扫描系统采用新技术，新材料，新工艺，新工作原理设计和制造。

Using a full set of German imported accessories, laser and galvanometer laser long service life

ELEVATOR SHAFT

03升降轴 | 高精度 方便

进口优质，高能，稳定的光纤激光器，高速精密光学振镜组件和业界顶级的软件系统

In a certain shock, vibration, high temperature or with ash, etc. Also can work normally under the harsh environment





WORK PLATFORM

04工作平台|专业灵活

结构紧凑, 兼顾, 轻便, 小巧, 接口简洁,
加工方向灵活可调, 驾驭自如

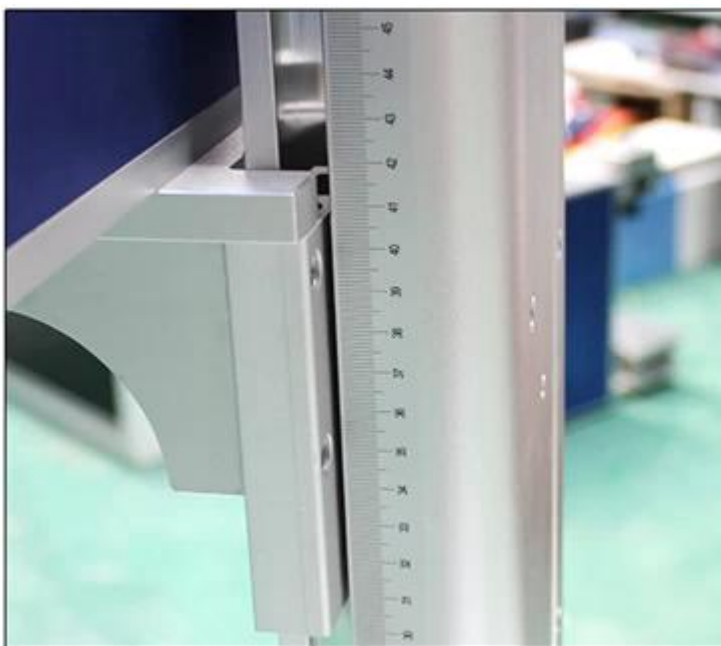
Small size, suitable for bad environmen
laser realize laser range through fiber
optic cable transmission, compact
structure

CONTROL PANEL

05控制面板|简单易学

人性化控制系统, 新增防尘塞设计
控制系统简单易学, 可脱机使用

Humanized control system, the new
dustproof plug design,
Control system is easy to learn,
can be used offline



SCALE

06标尺|高精度 准确

高性能标尺, 标刻效果更精美,
打标定位更准确

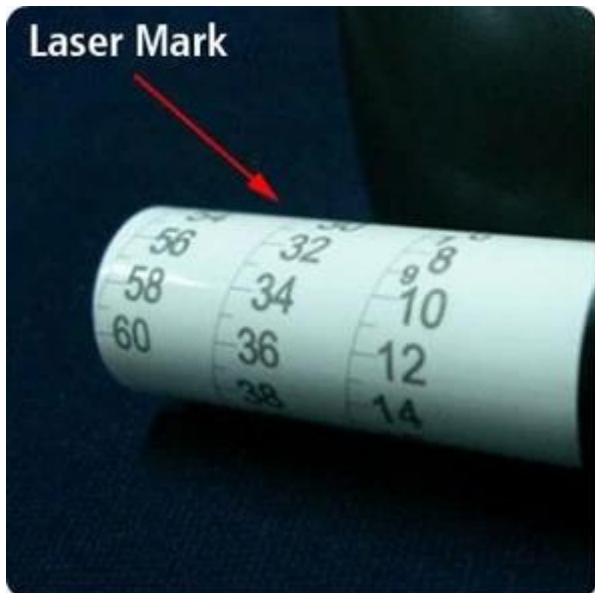
High performance scale, engraving
effect more beautiful, A calibration
more accurate

Application industrial for this Desktop FLM-002 20W Fiber Laser Engraver Machine Equipment : Jewellery, Keyboards of cell phone, Auto parts, Electronic components, Electronic appliance, Communication apparatus, sanitary wares, buckles, kitchenware, Sanitary equipment's, Hardware tools, Knife, Glasses, Clock, Cooker, Stainless steel products etc.

The material this Desktop FLM-002 20W Fiber Laser Engraver Machine Equipment Engraving bar codes, decorative map, LOGO, factory number, production date, dial on all Metals (Gold, silver, copper, alloy, aluminum, steel, stainless steel, name card), Non-metal (Plastic: engineering plastic and hard plastic, etc. Used in electronic components integrated circuits, mobile communications, precision instruments, glasses watch and clocks, computer keyboard, accessories, auto parts, plastic buttons, plumbing fittings, sanitary ware, PVC pipe, medical equipment, packaging bottles, etc.)



Laser Mark



Laser Mark



Laser Mark



Laser Mark



Laser Mark



Laser Mark



Laser Mark
Materials: Stainless Steel



Laser Mark
Materials: Stainless Steel



Laser Mark



Laser Mark









05 Factory Tour

China  zone



07 *Company culture*

China  zone

SHENZHEN SCOTLE TECHNOLOGY GROUP LIMITED

ChinaCNCzone, engrave your colorful life!

客户合影及公司文化 Customers and Company Culture

