

## ChinaCNCzone new [CNC 3040 mini CNC engraving machine](#)

Steel structure design with high stability

1500W and 2200W water cool spindle.

Ball screw, high precision

3 axis and 4 axis CNC version for selection.

The [3 axis CNC](#) can be updated into 4 axis with Limited switch

Auto-Checking function, easy to set origin of Z axis

Technical support always available, video supported.

Software: Mach3

Connect with computer by parallel port

From reliable & trustable professional [China CNC](#) Router manufacturer.

Integrated steel classic design and metal base, stable performance, more accurate





## 02 Parameters China zone

Model	CNC 3040 with Steel Structure
Power	1500W/ 2200W
No-load speed	3000mm/min
Processing speed	2000mm/min
Voltage	220V
Speed	24000rpm
positioning accuracy	0.02-0.05mm
Cool	Water cooling
Collet	ER11
Lub	Oil grease
Weight	53kg
Axis	3 axis and 4 axis CNC
Software	Mach3 software

## 03 Product Images China zone

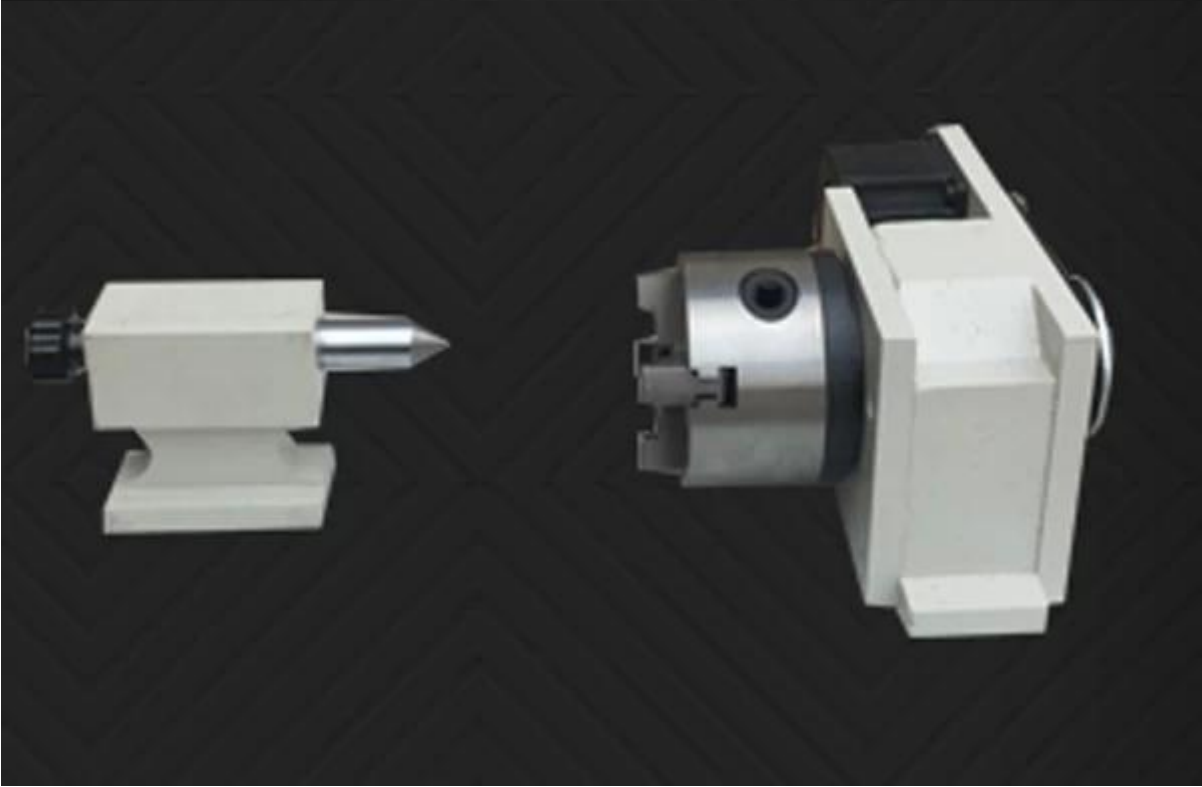










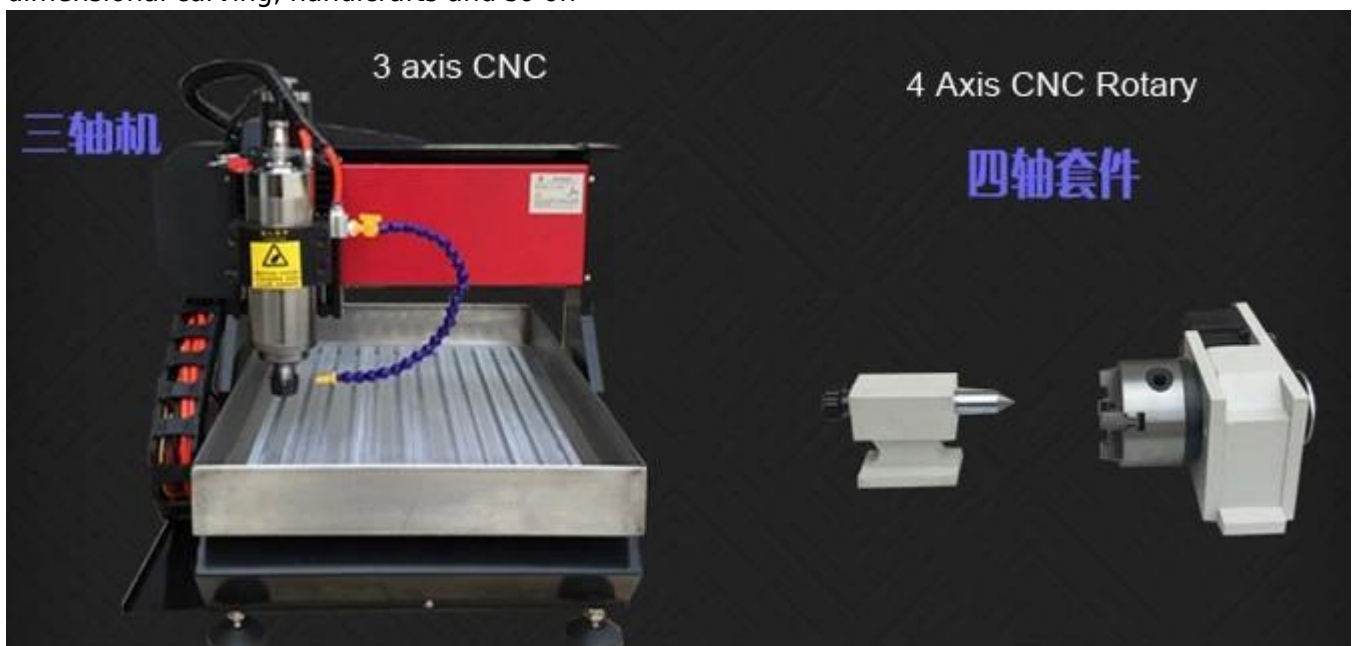




## 04 Applications

ChinaCNCzone

This CNC 3040 with Steel Structure [mini CNC](#) Engraving Machine can be widely used. The 3 axis version is ideal for plane carving: Drilling, milling, cutting, lettering, engraving, chamfering, etc. The [4 axis CNC](#) version is ideal for three-dimensional round: beads, handle, cylindrical, three-dimensional carving, handicrafts and so on















## 05 Factory Tour

ChinaCNCzone

ChinaCNCzone team always welcome customers from all over the world to visit our factory, and let us provide the best different models [mini CNC routers](#) for users together.





**QA Inspection Area**



**Mechanical Assembly Area**



**Machine Commissioning Area**



**Finish Products Area**

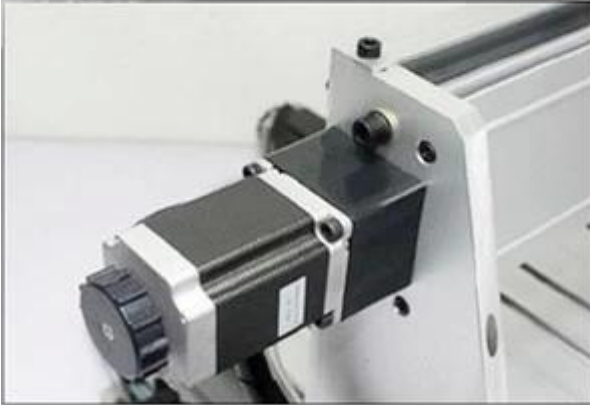


**Packaging Area**



Always be imitated, never be surmounted.

We all use well-designed professional aluminum to manufacture the machine. Almost all of the structural member are extruded by a dedicated mold. The production of large quantities so that we have a strong price competitiveness. Professional mold and materials so that our quality has been stable protection.







# SHENZHEN SCOTLE TECHNOLOGY GROUP LIMITED

ChinaCNCzone, engrave your colorful life!

## 客户合影及公司文化 Customers and Company Culture





**Dear customers,  
Thank you for your supports and your coming!**



## **WorkShop**



